

Certified, Filed and or Recorded on
May 18, 2010 AT 03:00PM

Signed: CK
MARILYN J NOVAK G V I
BENTON COUNTY MINNESOTA
MARILYN J NOVAK
COUNTY RECORDER

CERTIFICATE OF LOCATION OF GOVERNMENT CORNER

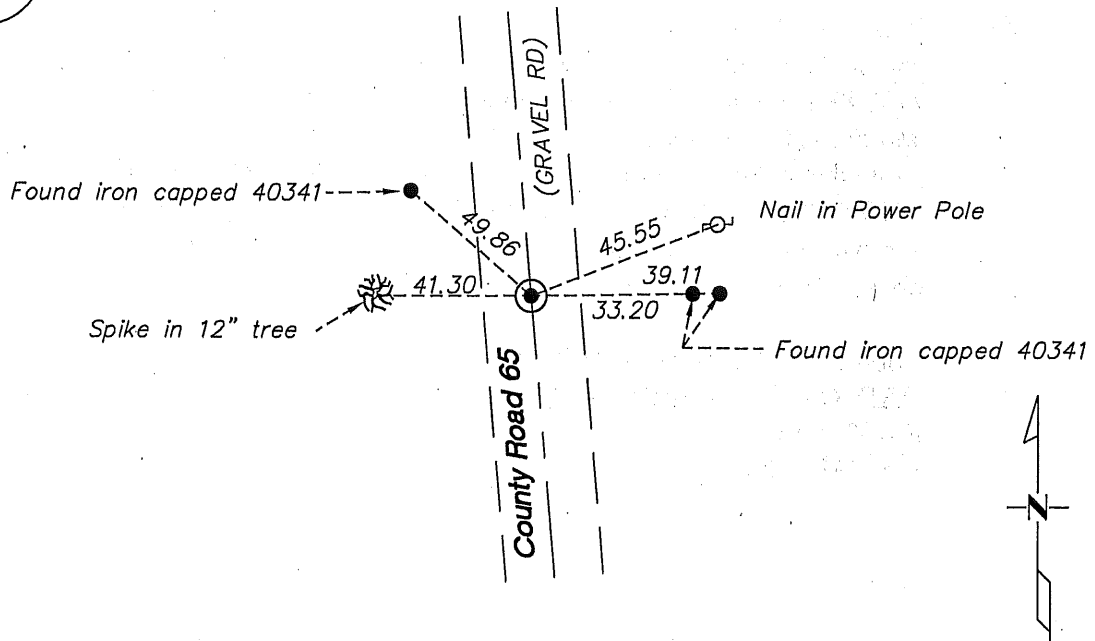
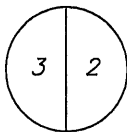
East Quarter Corner of Section 3, Township 38 North, Range 29 West, Fourth Principal Meridian, Benton County, Minnesota.

At this corner location shown on the sketch:

On 4/5/2010 found a Cast Iron Monument

left monument as found lowered monument removed monument (explain)

On _____ placed an _____



Statement of evidence for this corner location is on back of this page.

I hereby certify that this document was researched and prepared by me or under my direct supervision and that I am a Licensed Land Surveyor under the laws of the State of Minnesota.

Signature Jerome C. Wittstock
Benton County Surveyor
License No. 19552

Date: 5/17/2010

Benton County Surveyor's Office
 Jerome C. Wittstock, County Surveyor
 Minnesota License No. 19552

Statement of Evidence:**B033**

East Quarter Corner of Section 3, Township 38 North, Range 29 West, Alberta Township, 4th Principal Meridian, Benton County, Minnesota.

- 1855 Original US General Land Office survey set a wood post at this location and bearing trees were recorded.
- | | | |
|-----------|--------|----------|
| 16" Sugar | S 63 W | 30 links |
| 14" Sugar | N 41 E | 27 links |
- 1907 County Road Book, pages 4-6, contains a road survey by Felix Parent, County Surveyor, for State Road. Survey shows corner found and road run north-south. Stationing gives distance of 2624 feet to the SE corner and 2701 feet to the NE corner of Section 3.
- 1992 William Lunser, LS 9394, set a cast iron monument at the centerline of roads north/south and a fence line east/west. He filed a Certificate of Location (#234196) and notes a distance of 2733.70 feet to the NE corner Sec 3 and a distance of +/-2671.2 feet to the SE corner Sec 3.
- 2003 Certificate of Survey by David Regan, LS 12236, gives a distance of 2671.08 feet between the east quarter corner and the Southeast corner of Section 3.
- 2010 Westwood Professional Services, Inc. found a cast iron monument and verified one tie from Lunser certificate. A distance to the NE corner of section 3 measures 2733.88 feet and 2671.08 feet to the SE corner of section 3. The distance north is approximately 32 long of the 1907 distance and 44 feet long of GLO distance while the distance south is 47 feet long of the 1907 distance, and is 33 feet long of GLO distance. The CIM fits within 6 feet of being proportional with the GLO and with the 1907 distances north and south. The CIM is accepted as marking the obliterated corner position.

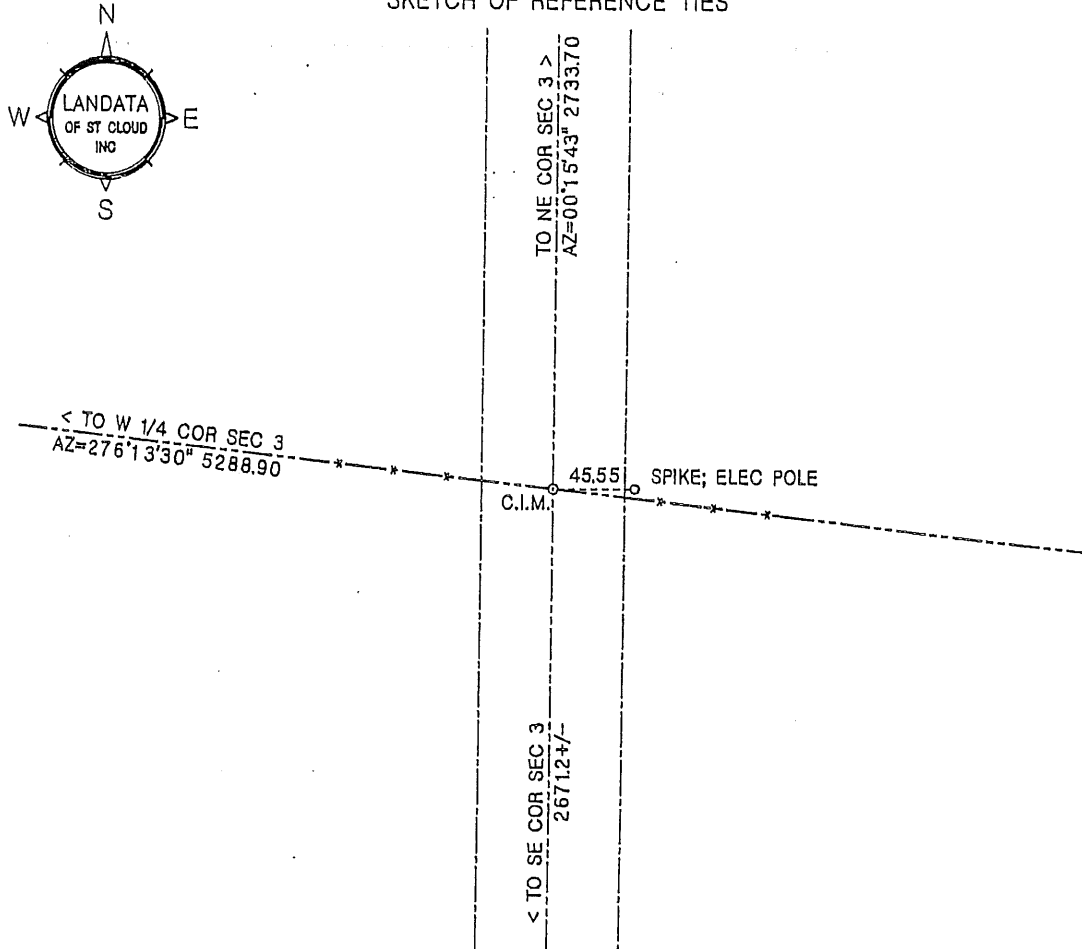
Coordinates Obtained by GPS
 NAD 83 (1996 Adjustment)
 N-193749.112
 E-531386.785

CERTIFICATE OF LOCATION OF GOVERNMENT CORNER

EAST QUARTER corner of Section 3, Township 38, Range 29, 4th P.M.
Benton County, Minnesota.

On Mar 26, 1992, A ~~one~~ cast iron monument (C.I.M.) was placed at this location.

SKETCH OF REFERENCE TIES



Statement of evidence relative to this corner location on back of page

I hereby certify that this document and the data contained herein was prepared by me or under my direct supervision.

William F. Lunser 3/13/96
William F. Lunser, L.S. Date
Mn Reg No 9394

FB; 135/35 DISC; 14

OFFICE OF THE COUNTY RECORDER
Benton County, Minnesota

I hereby certify that this document was filed in this office at ___:___ M. on the ___ day of _____, 19___.

County Recorder _____

By _____ Deputy

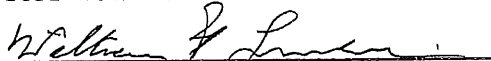
DOCUMENT NO. _____

STATEMENT OF EVIDENCE:

No records were found to indicate use or remonumentation of this corner after its original placement by the U.S. Government Survey.

A search of the area failed to uncover a marker. Occupation lines consist of fence lines east and west and north-south road.

After comparing measured distances to those of the G.L.O. I consider this corner obliterated with the fence and road as accessories.


William F. Lunser, L.S.

2 3 4 1 9 6

BENTON COUNTY RECORDER
BENTON COUNTY, MN
CERTIFIED TO BE FILED
AND/OR RECORDED ON

APR 10 2 37 PM '96

ALICE C. ENGELMEYER
COUNTY RECORDER

BY  DEPUTY 