

Certified, Filed and or Recorded on
October 18, 2011 2:45 PM

BENTON COUNTY MINNESOTA
MARILYN J NOVAK
COUNTY RECORDER

By: BW

G -- V -- I.

CERTIFICATE OF LOCATION OF GOVERNMENT CORNER

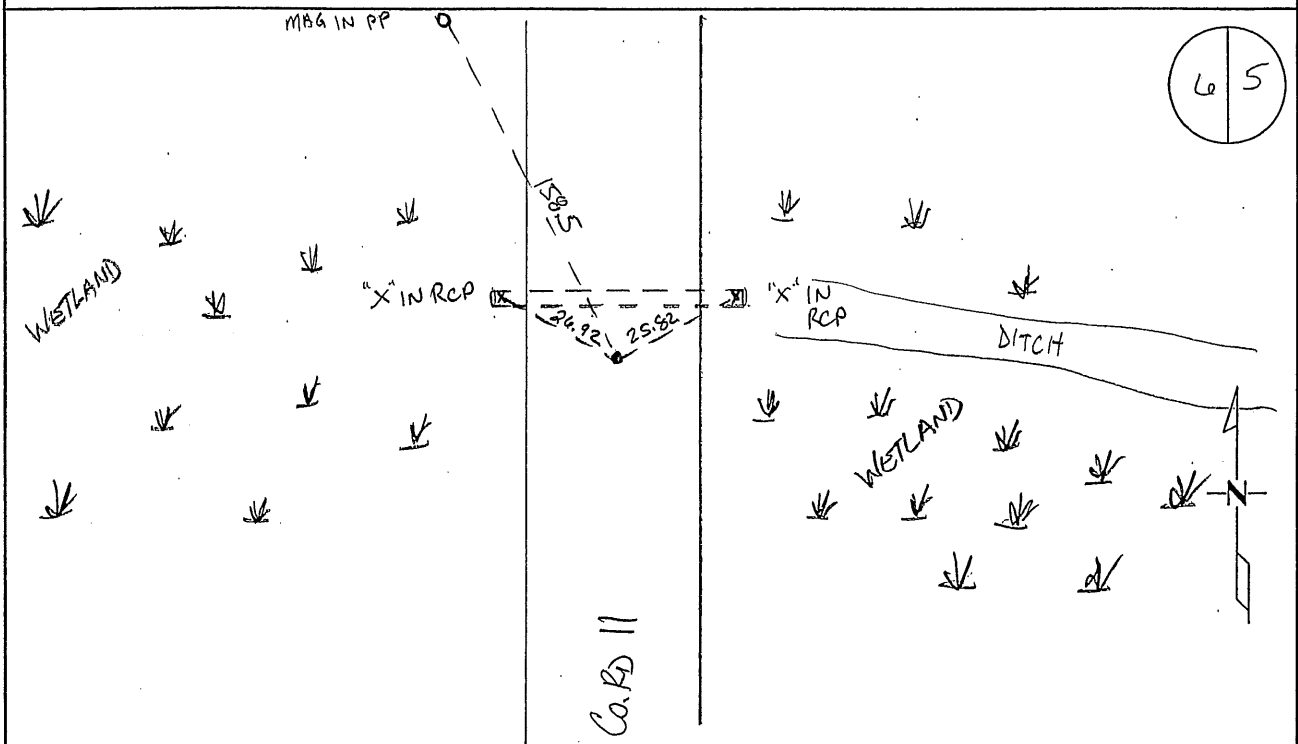
EAST QUARTER Corner of Section 6, Township 38, Range 29
4TH Principal Meridian, State of Minnesota, County of Benton

At the corner location shown on the sketch:

On 10/11/2011 found a 1/2" IRON PIPE CAPPED 1955Z

left monument as found lowered monument removed monument (explain)

On _____ placed an _____



Statement of evidence for this corner location is on back of this page.

I hereby certify that this document was researched and prepared by me or under my direct supervision and that I am a licensed Land Surveyor under the laws of the State of Minnesota.

Signature Jerome C. Wittstock
Benton County Surveyor
License No. 19552

Date: 14 Oct. 2011

Benton County Surveyor's Office
 Jerome C. Wittstock, County Surveyor
 Minnesota License No. 19552

Statement of Evidence:**B063**

East Quarter Corner of Section 6, Township 38 North, Range 29 West, Alberta Township, 4th Principal Meridian, Benton County, Minnesota.

1855 Original US General Land Office survey set a wood post and bearing trees noted as:

6" Tamarack	S 70 ½ W	27 links
6" Tamarack	N 68 ½ E	17 links

1935 County Engineer's Notebook No. 93 contains survey for Road running from south to north. Notes PI as a hub on fence line east and west. Ties:

Hub SW	56.5
Hub W	44.4

Stationing gives distances of 2703.5 feet to the SE corner and 2714.1 feet to the NE corner with a delta angle of 0-15' left.

1964 County Engineer's Notebook No. 246 contains survey for CSAH 11 running south to north on section line. Notes show corner marked by a spike set in center of road with fence line west and east. Ties:

TP SE	65.25
PP SW	116.2

Stationing gives distances of 2715.4 feet to the SE corner and 2704.2 feet to the NE corner with a delta angle of 0-17' left.

2009 The Benton County Surveyor's Office found a PK nail in the north-south centerline of CSAH 11 and on a fence west. The position fits the 1964 distances within 2 feet and 1935 distances within 3.5 feet with the deflection angle of 0 degrees 18 minutes fitting the 1964 deflection angle within a minute. Believing the PK nail marking the obliterated corner position of the north-south centerline and fence west being the best available evidence, a 1/2-inch by 14-inch iron pipe capped 19552 was set to mark the position.

Coordinates Obtained by GPS
 NAD 83 (1996 Adjustment)
 N-193973.737
 E-515444.088

2011 The Benton County Surveyor's Office found the iron pipe capped 19552, verified the 2009 coordinate position and created reference ties.