

Certified, Filed and or Recorded on
June 03, 2014 11:04 AM

BENTON COUNTY MINNESOTA
MARILYN J NOVAK
COUNTY RECORDER

By: BW

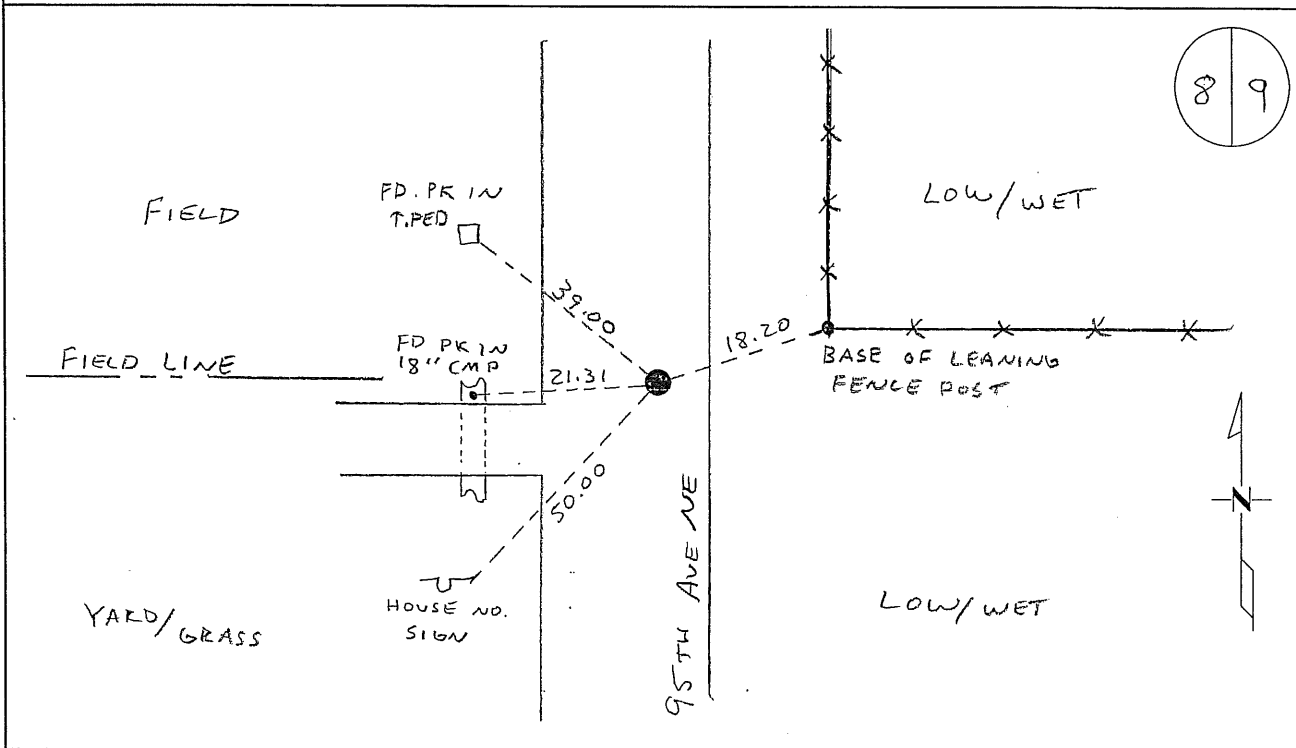
B - V - I

CERTIFICATE OF LOCATION OF GOVERNMENT CORNER

EAST QUARTER Corner of Section 8, Township 38, Range 29
4TH Principal Meridian, State of Minnesota, County of Benton

At the corner location shown on the sketch:

- On _____ found a 15" RED GRANITE WITH SOMEWHAT OF A POINT ON
WITH WOOD REMAINS ALONG SIDE DOWN 3' 7"
- left monument as found lowered monument removed monument (explain)
- On 06/09/09 placed an 1/2" IP CAP # 19552 OVER GRANITE ROCK



Statement of evidence for this corner location is on back of this page.

I hereby certify that this document was researched and prepared by me or under my direct supervision and that I am a licensed Land Surveyor under the laws of the State of Minnesota.

Signature Jerome C Wittstock
Benton County Surveyor
License No. 19552

Date: 5-19-2014

Benton County Surveyor's Office
 Jerome C Wittstock, Deputy County Surveyor
 Minnesota License No. 19552

Statement of Evidence:

B083

East Quarter Corner of Section 8, Township 38 North, Range 29 West, Alberta Township, 4th Principal Meridian, Benton County, Minnesota.

1855 Original US General Land Office survey set a wood post at this location and bearing trees were recorded.

9" Tamarack	N 70 E	19 links
9" Tamarack	N 35 W	30 links

1931 County Surveyor's Record Book 2, page 252, H.G. Elletson shows survey of the east-west $\frac{1}{4}$ line of Section 8. Survey shows $\frac{1}{16}$ th corners and center of section set by splits east-west with 1320.5 feet per $\frac{1}{4}$ mile. He notes the following reference ties to a stake and rock in the centerline of a road, 2 feet south of a fence.

Cor FP	W	19.0
Cor FP	E	18.2

1987 Paul Wellen's, LS 10461, notes show a CIM found.

2009 The Benton County Surveyor's Office excavated a 10-foot by 12-foot hole to original soil. A 15-inch somewhat pointed red granite with wood remains alongside was found down 3 feet. It measures within 7 feet of the 1931 survey by Elletson to the west quarter corner of Section 8. Distance north measures 2697.04 to the northeast corner and the distance south measures 2766.96 feet to the southeast corner of Section 8. Believing the stone and stake to be the one Elletson mentions in his 1931 survey, the location was accepted as marking the obliterated corner position.

Coordinates Obtained by GPS
 NAD 83 (1996 Adjustment)
 N- 188652.489
 E- 521051.912