

409193

Certified, Filed and or Recorded on  
April 29, 2015 2:20 PM

BENTON COUNTY MINNESOTA  
MARILYN J NOVAK  
COUNTY RECORDER

By: CK

G -- V -- I

# CERTIFICATE OF LOCATION OF GOVERNMENT CORNER

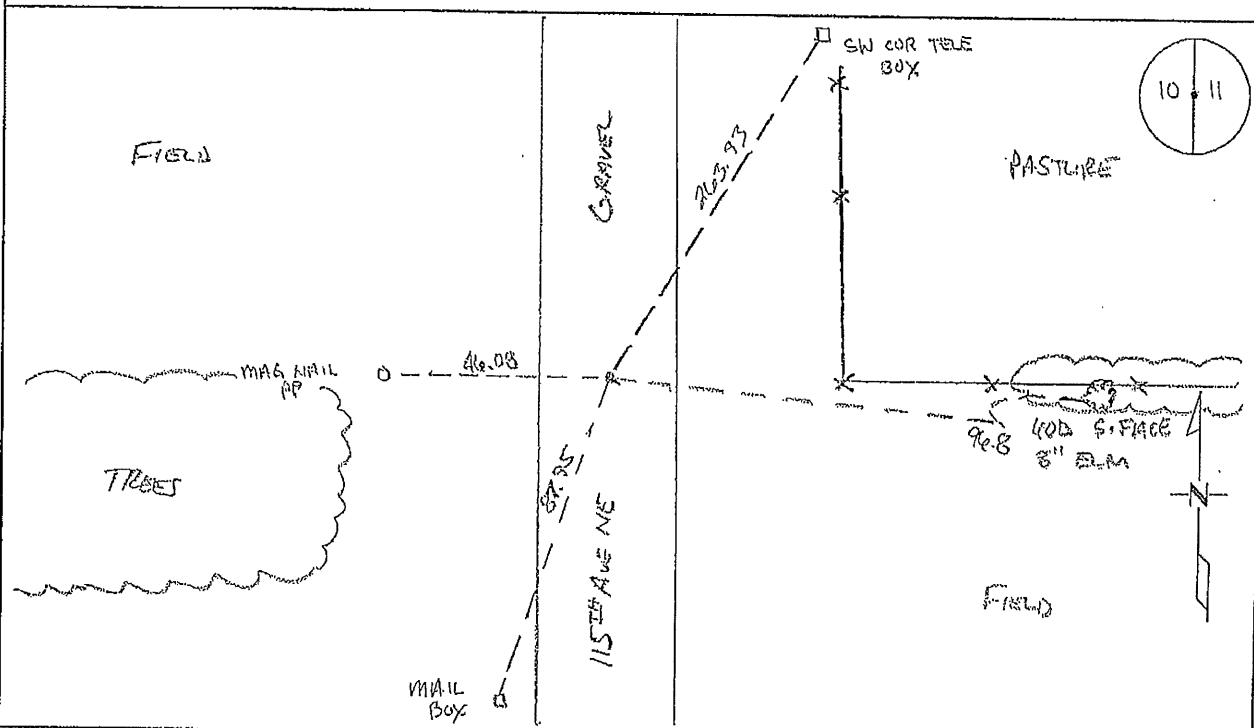
EAST QUARTER Corner of Section 10, Township 38, Range 29  
4TH Principal Meridian, State of Minnesota, County of Benton

At the corner location shown on the sketch:

On 03/25/2015 found a 1/2" OPEN PIPE

left monument as found       lowered monument       removed monument (explain)

On \_\_\_\_\_ placed on \_\_\_\_\_



Statement of evidence for this corner location is on back of this page.

I hereby certify that this survey, plan, or report was prepared by me or under my direct supervision and that I am a duly Licensed Land Surveyor under the laws of the state of Minnesota.

Signature Jerome C. Wittstock  
Jerome C. Wittstock, PS, CFedS, Benton County Surveyor  
License No. 19552

Date: 4/29/2015

Benton County Surveyor's Office  
 Jerome C. Wittstock, County Surveyor  
 Minnesota License No. 19552

**Statement of Evidence:**

B103

East Quarter Corner of Section 10, Township 38 North, Range 29 West, Alberta Township, 4<sup>th</sup> Principal Meridian, Benton County, Minnesota.

1855 Original US General Land Office survey set a wood post at this location and bearing trees were recorded.

13" Birch	N 85 W	26 links
9" Sugar	N 30 E	37 links

1907 County Road Book, pages 4-6, contains a road survey by Felix Parent, County Surveyor, for State Road. Survey shows corner found and road run north-south. Stationing gives distance of 2649 feet to the SE corner and 2692 feet to the NE corner of Section 10.

1912 County Surveyor's Record Book 2, page 231, notes the following reference ties to a post:

12" Blk Oak	S 85-30 W	56.4 feet
6" Blk Oak	N 8-40 E	141.0 feet

1978 Paul Wellen, LS 10461, found a 1/2" iron pipe at the centerline of a north/south road and a fence line east/west. He replaced it with a 1/2" I.P. and filed a Certificate of Location (#151871). His notes show measurements of 2649.59 feet to the NE corner and 2656.57 feet to the SE corner.

2008 The Benton County Surveyor's Office found a 1/2" open iron pipe in the north-south centerline of 115<sup>th</sup> Avenue NE and on a fence to the east.

Coordinates Obtained by GPS  
 NAD 83 (1996 Adjustment)  
 N- 188439.297  
 E- 531688.300

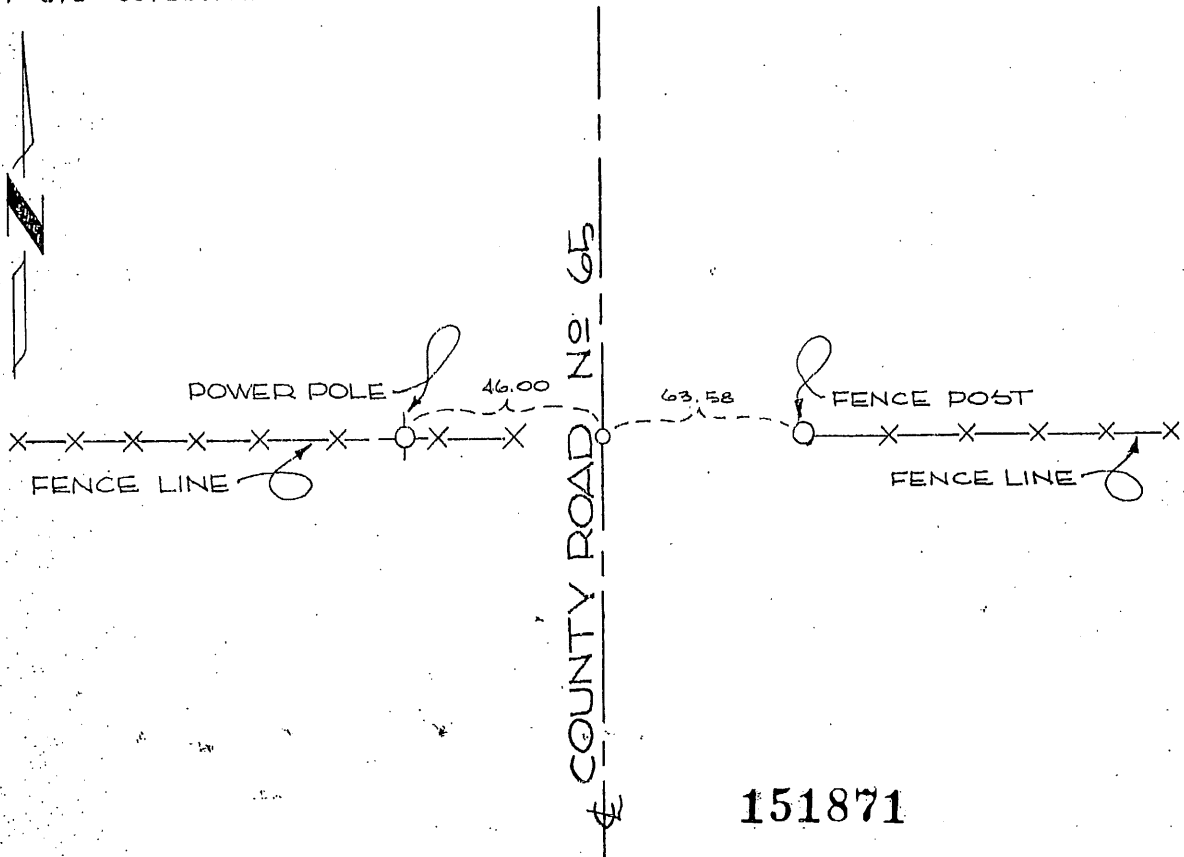
2015 The Benton County Surveyor's Office found the 1/2" open iron pipe and verified the 2008 coordinates. The iron falls at the intersection of the north-south centerline, as noted in 1907, and on a fence to the east. The distance north fits within 3 feet of the 1907 distance north for the half mile, and 36 feet short for the half mile south. If an extra tally count error occurred in the half mile south, the half mile would fit within 3 feet and would fit proportional for the mile. The found 1/2" open iron pipe is accepted as marking the corner position.



# CERTIFICATE OF LOCATION OF GOVERNMENT CORNER

I hereby certify that on the 17 day of October, 19 78  
I did set the East 1/4 corner of Section 10,  
Twp. 38, Rg. 29, Benton County, Minnesota, which  
was evidenced by a 1/2" iron pipe, on the center line of north-south  
County Road No. 65, on west fence line, and on east fence line.

I further certify that in order to perpetuate said corner I did  
at the exact location thereof place a permanent marker consisting  
of a 1/2" iron pipe and that  
I did establish witness or reference monuments as shown below:



I hereby certify that the above  
is true and correct and that I am  
a registered Land Surveyor under  
the laws of the State of Minnesota.

Paul J. Nelson

Minn. Registration No. 10461

Office of the County Recorder,  
Benton County, Minn.

I hereby certify that the within instrument  
was filed for record in this office on the  
26th day of March, 1979  
a.m.

F.A. Johnson  
County Recorder

By \_\_\_\_\_ Deputy.