

Certified, Filed and or Recorded on August 12, 2014 1:21 PM

BENTON COUNTY MINNESOTA
MARILYN J NOVAK
COUNTY RECORDER

By: ck

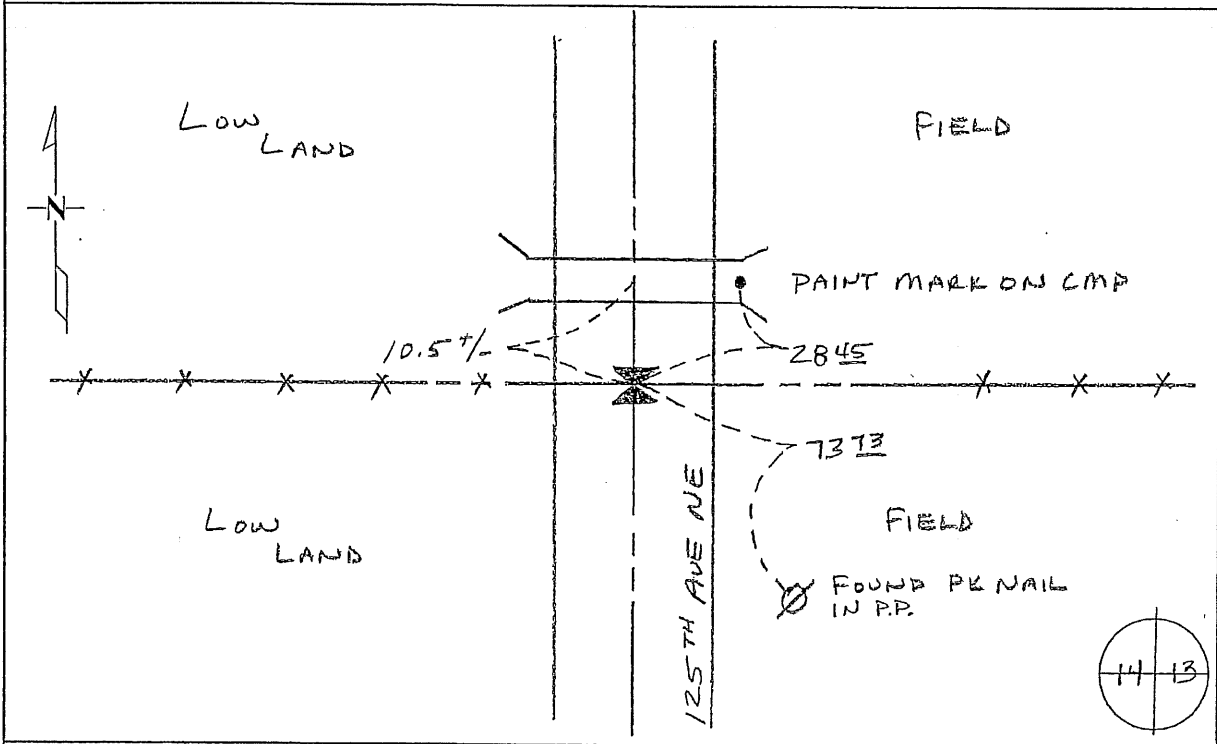
G - V - I

CERTIFICATE OF LOCATION OF GOVERNMENT CORNER

EAST QUARTER Corner of Section 14, Township 38, Range 29
4TH Principal Meridian, State of Minnesota, County of Benton

At the corner location shown on the sketch:

- On 2/16/07 found a CAST IRON MONUMENT
- left monument as found lowered monument removed monument (explain)
- On _____ placed on _____



Statement of evidence for this corner location is on back of this page.

I hereby certify that this document was researched and prepared by me or under my direct supervision and that I am a licensed Land Surveyor under the laws of the State of Minnesota.

Signature: Jerome C. Wittstock Date: 7-29-2014 License No. 19552

Title: Land Surveyor Professional Engineer County Surveyor County Engineer

Benton County Surveyor's Office
 Jerome C. Wittstock, County Surveyor
 Minnesota License No. 19552

Statement of Evidence:**B143**

East Quarter Corner of Section 14, Township 38 North, Range 29 West, Alberta Township, 4th Principal Meridian, Benton County, Minnesota.

1855 Original US General Land Office survey set a wood post at this location and bearing trees were recorded.

9" Tamarack	S 88 ½ E	18 links
9" Tamarack	N 61 ½ W	6 links

1944 County Engineer's Notebook No. 157 contains road survey for CAR No. 43 running north to south along the section line. Corner is shown as a hub set in center of road with fence east and west. Ties:

FP	E	30.8'
TP	NE	36.7'

Stationing gives distances of 2658.8 feet to the NE corner and 2651.9 feet to the SE corner with a delta angle of 0-07' right.

1963 County Surveyor's Record Book 2, page 264, notes the following reference ties to an iron and a wood stake:

Cor FP	E	33.65
PP	SE	76.25
TP	NE	36.7' (Older)

(County Engineer's Notebook No. 157 notes found old post and placed iron with same ties.)

1993 Sidney Williamson, LS, found a ¾" solid iron at the centerline of roads north/south and a fence line west. He replaced it with a cast iron monument and filed a Certificate of Location (#223492).

2007 The Benton County Surveyor's Office found a cast iron monument in the north-south centerline of 125th Ave. NE on fences east and west. The found cast iron fits distances north and south within one foot and is accepted as marking the corner position.

Coordinates Obtained by GPS
 NAD 83 (1996 Adjustment)
 N-183023.359
 E-536961.577

CERTIFICATE OF LOCATION OF GOVERNMENT CORNER

EASTQUARTER Corner of Section 14, Township 38, Range 29, _____ P.M.

STATE OF MINNESOTA, County of BENTON

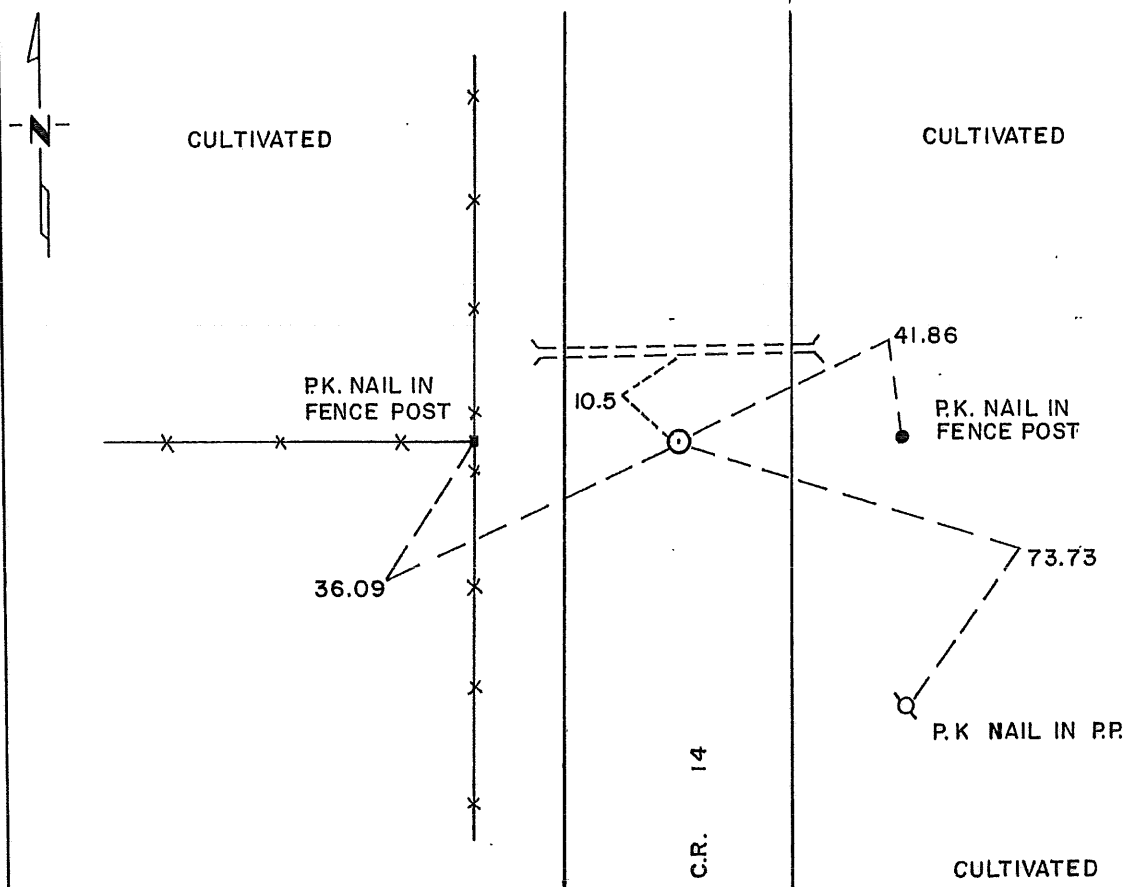
At the corner location shown on the sketch:

On 4-27-93 found a 3/4" SOLID IRON
DATE

left monument as found, lowered monument, removed monument (explain)

On 6-17-93 placed a STANDARD CAST IRON MONUMENT
DATE

SKETCH OF REFERENCE TIES



Statement of evidence relative to this corner location is on back of page.

I hereby certify that this document and the data contained herein was prepared by me or under my direct supervision.

Sidney P. Williamson 5/24/94
SIGNATURE DATE

Registration No. 10918

- Land Surveyor, Professional Engineer
- County Surveyor, County Engineer

OFFICE OF THE COUNTY RECORDER

County of _____

I hereby certify that this document was filed in the Co. Recorders office at _____ .M. on the _____ day of _____ A.D., 19 _____

County Recorder _____

By _____, Deputy

DOCUMENT NO. _____

Statement of Evidence:

1. In 1855, the Original Government Survey was performed.
2. The Benton County Survey Records indicate an iron at this corner.
3. In 1963, the Benton County Highway Department measured 2658.3 feet to the northeast corner and 2650.7 feet to the southeast corner.
4. On April 27, 1993, Williamson-Kotsmith, Inc. found a ½ inch solid pin on the centerline of C.R. 14 and fence lines east and west. Williamson-Kotsmith, Inc. measured 2658.79 feet to the northeast corner and 2651.58 feet to the southeast corner.
5. On June 22, 1993, Williamson-Kotsmith, Inc. removed ½ inch solid pin and set a Standard Cast Iron Monument at the same location.

223492

OFFICE OF
BENTON COUNTY RECORDER
BENTON COUNTY, AR
CERTIFIED TO BE FILED
AND/OR RECORDED ON

JUN 17 1 10 PM '94

ALICE S. HANNEY
COUNTY CLERK

BY *JW* DEPUTY