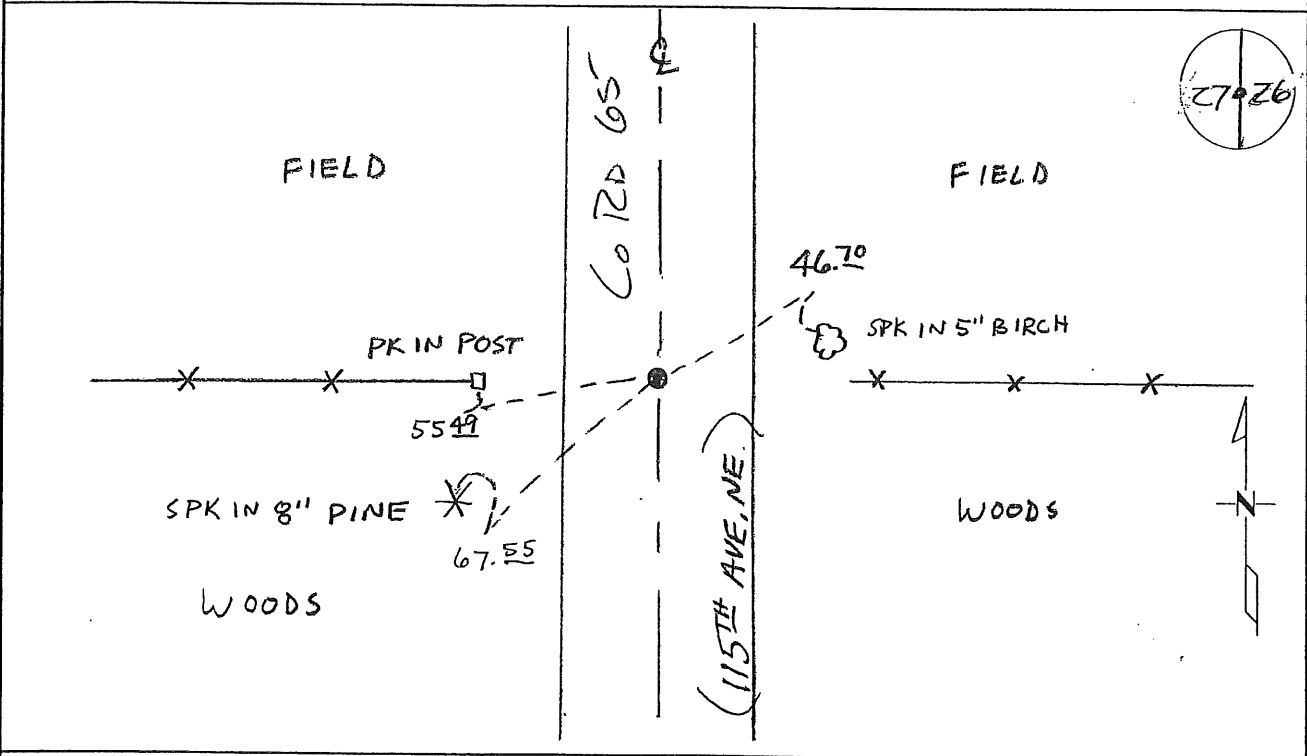


CERTIFICATE OF LOCATION OF GOVERNMENT CORNER

EAST QUARTER Corner of Section 27, Township 38, Range 29
4TH Principal Meridian, State of Minnesota, County of Benton

At the corner location shown on the sketch:

- On 11-11-08 found a 1/2" OPEN IRON PIPE
- left monument as found lowered monument removed monument (explain)
- On _____ placed an _____



Statement of evidence for this corner location is on back of this page.

I hereby certify that this document was researched and prepared by me or under my direct supervision and that I am a licensed Land Surveyor under the laws of the State of Minnesota.

Signature [Handwritten Signature]
Deputy County Surveyor
License No. 43932

Date: 12/17/08

Statement of Evidence:

B273

East Quarter Corner of Section 27, Township 38 North, Range 29 West, Alberta Township, 4th Principal Meridian, Benton County, Minnesota.

1855 Original US General Land Office survey set a wood post at this location and bearing trees were recorded.

14" Sugar	N 58 E	23 links
6" Sugar	N 75 W	27 links

1907 County Road Book, pages 4-6, contains a road survey by Felix Parent, County Surveyor, for State Road. Survey shows corner and road run north-south. Stationing gives distance of 2686 feet to the SE corner and 2653 feet to the NE corner of Section 27.

1912 County Surveyor's Record Book 2, page 231, notes ties to a post west of the road:

12" Pine	N 46 W	30'
10" Pine	S 69 ½ E	130'

1960 County Surveyor's Record Book 2, page 290, notes the following reference ties to a spike set (by JDK):

24" Pine	NW	39.75
Twin Elm	E	99.6

2004 Certificate of Survey by Larry Huhn, LS 24332, in the NW ¼ of the SW ¼ of Section 26 shows ½ " iron pipe at the corner.

2008 Westwood Professional Services, Inc. found a ½" iron pipe in the centerline of County Road 65 and in line with fence lines east and west. Field crew notes possible location of 1912 tie to 10" Pine (36" pine stump S 69° 54' E 123 feet). Measured 2686.34 feet to SE corner of Section 27 which agrees with 1907 County Road Book. ½" iron pipe is accepted as marking the obliterated position for this corner.

County Coordinates Obtained by GPS
NAD 83 (1996 Adjustment)
N-172519.157
E-531757.831

12-28

A 362623

Certified, Filed and or Recorded on
Dec. 26, 2008 AT 10:39AM

Signed: CK
MARILYN J NOVAK E V I
BENTON COUNTY MINNESOTA
MARILYN J NOVAK
COUNTY RECORDER

DOCUMENT COVER SHEET

Document Name: **GOVERNMENT CORNER**

BENTON COUNTY OF

THE PUBLIC

Document Date: **12/17/2008**

This cover sheet is being attached to this document to provide room for recording information and is considered part of this document