

409190

Certified, Filed and or Recorded on  
April 29, 2015 2:20 PM

BENTON COUNTY MINNESOTA  
MARILYN J NOVAK  
COUNTY RECORDER

By: CK

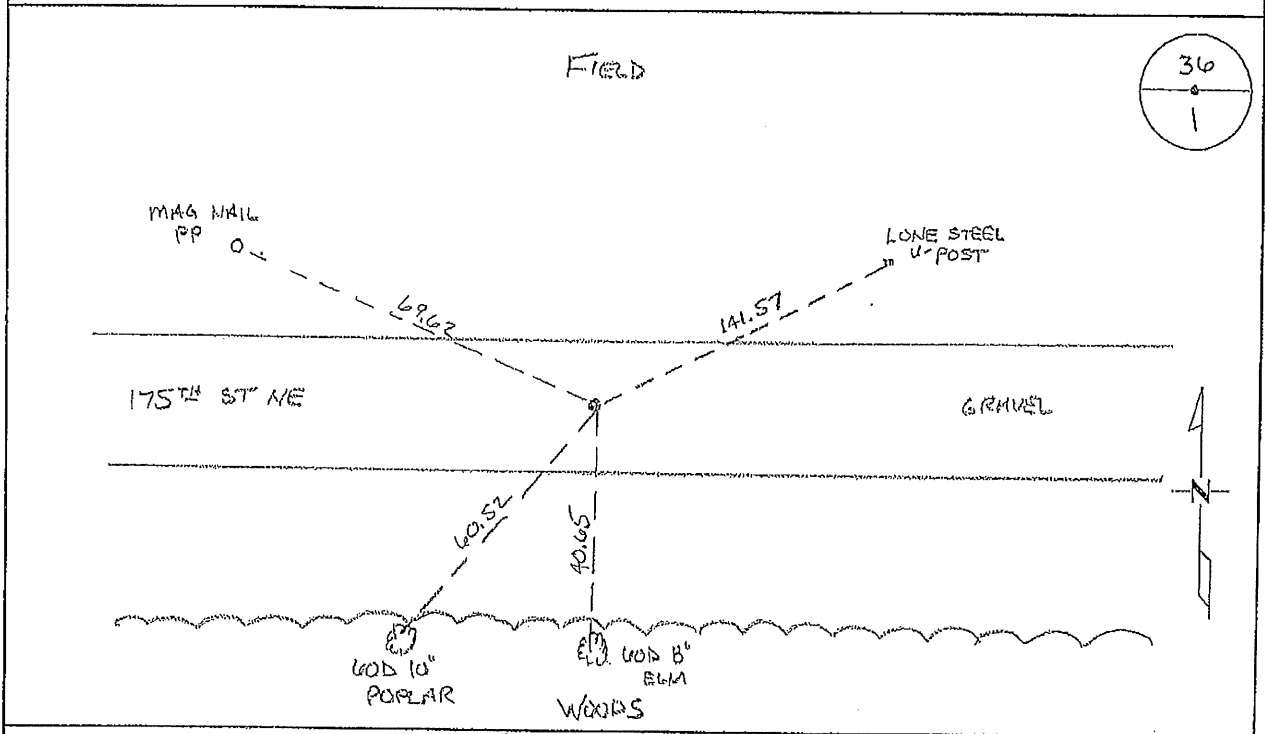
8--V--1

# CERTIFICATE OF LOCATION OF GOVERNMENT CORNER

NORTH QUARTER Corner of Section 1, Township 38, Range 29  
4TH Principal Meridian, State of Minnesota, County of Benton

At the corner location shown on the sketch:

- On 03/25/2015 found a CAST IRON MONUMENT BURIED 0.6 FT ON  
EAST/WEST CENTERLINE
- left monument as found       lowered monument       removed monument (explain)
- On \_\_\_\_\_ placed on \_\_\_\_\_



Statement of evidence for this corner location is on back of this page.

I hereby certify that this survey, plan, or report was prepared by me or under my direct supervision and that I am a duly Licensed Land Surveyor under the laws of the state of Minnesota.

Signature Jerome C. Wittstock  
Jerome C. Wittstock, PS, CFedS, Benton County Surveyor  
License No. 19552

Date: 4/29/2015

Benton County Surveyor's Office  
 Jerome C. Wittstock, County Surveyor  
 Minnesota License No. 19552

**Statement of Evidence:**

**B011**

North Quarter Corner of Section 1, Township 38 North, Range 29 West, Alberta Township, 4<sup>th</sup> Principal Meridian, Benton County, Minnesota.

1849 Original US General Land Office survey set a wood post and bearing trees noted as:

8" Blk Oak	S 26 E	38 links
6" Blk Oak	N 2 E	11 links

Line trees were noted as a 34" Pine East 11.22 chains and a 30" Pine West 21.75 chains.

2003 No record resurvey information was found on this corner in the Benton County records. No corner monument was found during a field search of the corner area and no lines of occupation. Westwood Professional Services, Inc. established corner by lost method, midway and on line between section corners. We measured 5334.14 feet between section corners.

County Coordinates to Lost Position  
 NAD 83 (1996 Adjustment)  
 N- 196337.848  
 E- 539153.964

2015 The Benton County Surveyor's Office found a Cast Iron Monument at the lost position and verified the 2003 coordinates.