

409203

Certified, Filed and or Recorded on
April 29, 2015 2:20 PM

BENTON COUNTY MINNESOTA
MARILYN J NOVAK
COUNTY RECORDER

By: OK

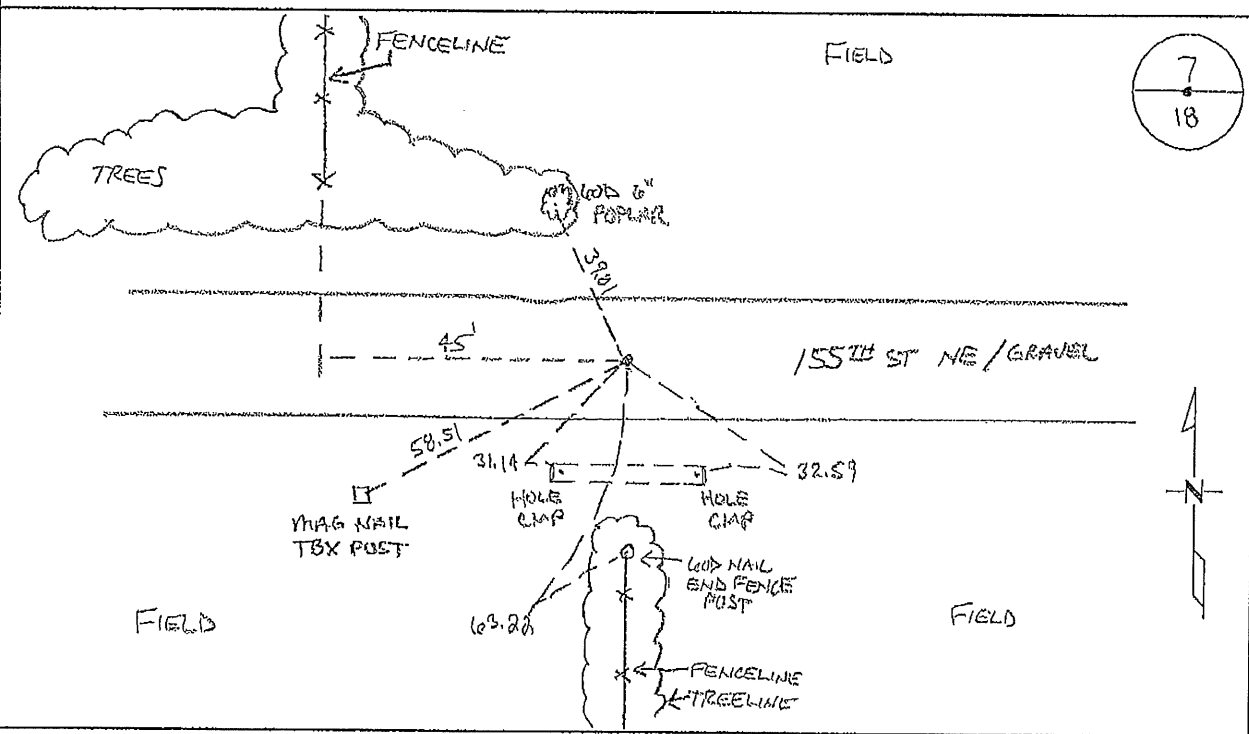
G -- V -- I

CERTIFICATE OF LOCATION OF GOVERNMENT CORNER

NORTH QUARTER Corner of Section 18, Township 38, Range 29
4TH Principal Meridian, State of Minnesota, County of Benton

At the corner location shown on the sketch:

- On 03/25/2015 found a CAST IRON MONUMENT BURIED 2.1 FT ON
EAST/WEST CENTERLINE AND FENCELINE SOUTH
- left monument as found lowered monument removed monument (explain)
- On _____ placed an _____



Statement of evidence for this corner location is on back of this page.

I hereby certify that this survey, plan, or report was prepared by me or under my direct supervision and that I am a duly Licensed Land Surveyor under the laws of the state of Minnesota.

Signature Jerome C. Wittstock
Jerome C. Wittstock, PS, CFedS, Benton County Surveyor
License No. 19652

Date: 4/29/2015

Benton County Surveyor's Office
 Jerome C. Wittstock, County Surveyor
 Minnesota License No. 19552

Statement of Evidence:**B181**

North Quarter Corner of Section 18, Township 38 North, Range 29 West, Alberta Township, 4th Principal Meridian, Benton County, Minnesota.

- 1855 Original US General Land Office survey set a wood post at the location and bearing tree was recorded.
- | | | |
|------------|----------|-----------|
| 12" Poplar | N 18 E | 579 links |
| 8" Poplar | S 13 ½ W | 205 links |
- 1990 Paul Wellen, LS 10461, found a ¾" iron pipe in the centerline of road east/west and in line with a fence line south. He set a cast iron monument over the pipe.
- 1990 On Certificate of Location (#201528) for the NE corner of Sec. 18 filed by William Lunser, LS 9394, he notes a distance of 2614.73 feet to the NE corner of Sec. 18.
- 2002 No resurvey information was found on this corner in the Benton County records.
- 2007 The Benton County Surveyor's Office found a CIM measuring 2614.88 feet to the northeast corner and 2695.18 feet to the northwest corner of Section 18; falling 112 feet east of the lost position with the overall mile measuring 168.6 feet long of GLO.

Coordinates Obtained by GPS
 NAD 83 (1996 Adjustment)
 N - 185835.632
 E - 513210.478

- 2014 The 2007 found monument falls in the east-west centerline on a fence line to the south. The occupation line to the north falls considerably further to the west, though not at the lost position and does not run on line from the south quarter corner to the north quarter corner of Section 7. The measurements are considerably disproportionate with the GLO measurements. Similar disproportionate measurements are seen at the south line of Section 18 and south line of Section 19 of this township. The disproportionate measure on these two southerly lines is reported as far back as the 1930's, though there is no record of surveys on this particular section line. Benton County has many section lines that differ considerably from GLO measurements for unknown reasons. Section 18 appears to have occupation indicating the section was broken into "40's" based on a regular section instead of an irregular section along the west tier of a township. Since measurements and the occupation lines are consistent with other section lines closing on the west line of the township and the monument falls at long standing lines of occupation, it is accepted as marking the corner position.
- 2015 The Benton County Surveyor's Office found the CIM and verified the 2007 coordinates.