

Certified, Filed and or Recorded on August 19, 2014 1:18 PM

BENTON COUNTY MINNESOTA  
MARILYN J NOVAK  
COUNTY RECORDER

By: BW

6--V--I

### CERTIFICATE OF LOCATION OF GOVERNMENT CORNER

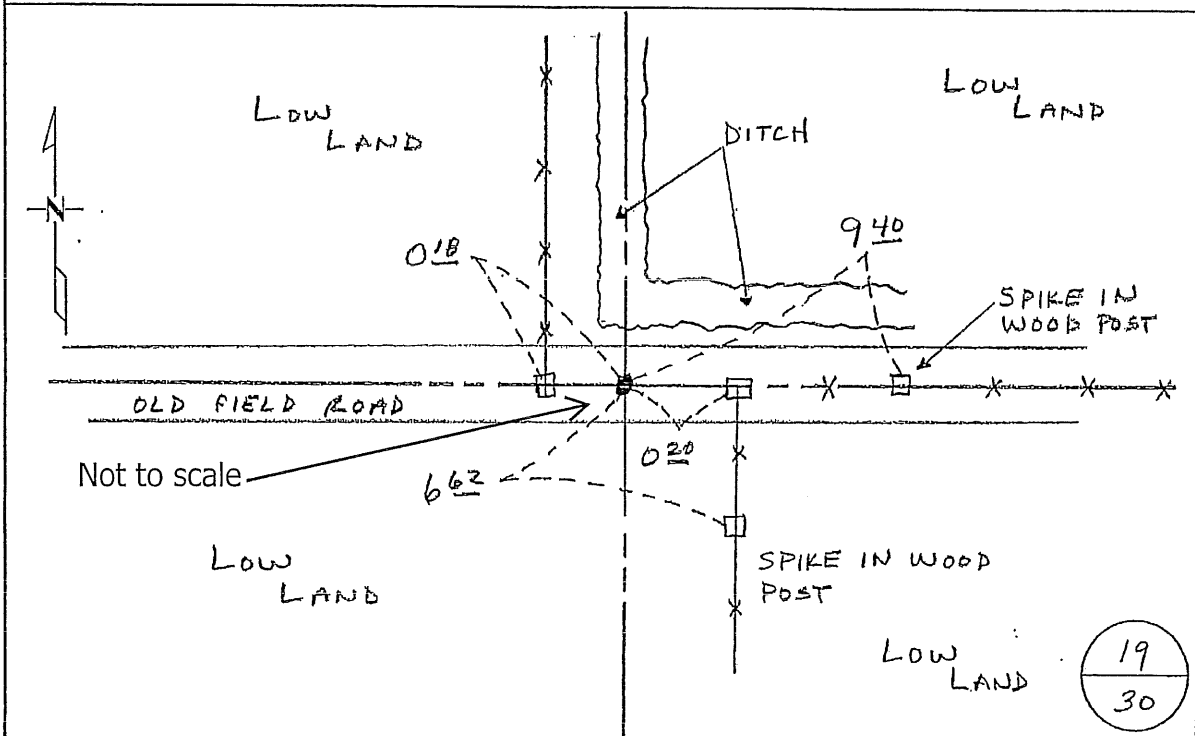
NORTH QUARTER Corner of Section 30, Township 38, Range 29  
4TH Principal Meridian, State of Minnesota, County of Benton

At the corner location shown on the sketch:

On 2/27/07 found a 1/2" PIPE CAPPED 12236  
DATE

left monument as found     lowered monument     removed monument (explain)

On \_\_\_\_\_ placed an \_\_\_\_\_  
DATE



Statement of evidence for this corner location is on back of this page.

I hereby certify that this document was researched and prepared by me or under my direct supervision and that I am a licensed Land Surveyor under the laws of the State of Minnesota.

Signature Jerome C. Wittstock Date 8-18-2014 License No. 19552

Title:     Land Surveyor     Professional Engineer     County Surveyor     County Engineer

Benton County Surveyor's Office  
 Jerome C. Wittstock, County Surveyor  
 Minnesota License No. 19552

**Statement of Evidence:****B301**

North Quarter Corner of Section 30, Township 38 North, Range 29 West, Alberta Township, 4<sup>th</sup> Principal Meridian, Benton County, Minnesota.

1855 Original US General Land Office survey set a wood post at this location and bearing trees were recorded

6" Tamarack	N 9 W	6 links
7" Tamarack	S 43 E	20 links

2002 No resurvey information was found on this corner in the Benton County records.

2007 The Benton County Surveyor's Office found a 1/2" iron pipe capped 12236 on a north-south fence line and fence east and old field road centerline west.

Coordinates Obtained by GPS  
 NAD 83 (1996 Adjustment)  
 N-175027.773  
 E-513504.377

2014 The found iron falls on line between the northeast and northwest corners of Section 30 and 48.04 feet east of the lost position. The position fits occupation along the north-south quarter line of Section 30 with nothing that can be determined in Section 19. Since the found iron falls on line between section corners and at the intersection of occupation lines, it is accepted as marking the corner position.