

Certified, Filed and or Recorded on August 19, 2014 1:18 PM

BENTON COUNTY MINNESOTA
MARILYN J NOVAK
COUNTY RECORDER

By: BW

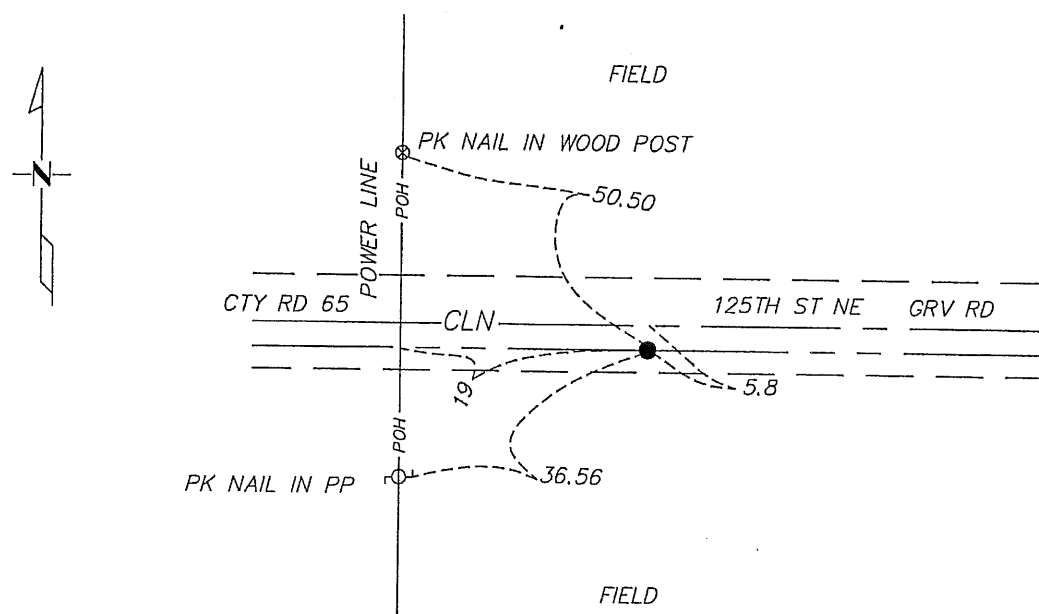
6 - V - 1

CERTIFICATE OF LOCATION OF GOVERNMENT CORNER

North Quarter Corner of Section 34, Township 38, Range 29
4TH Principal Meridian, State of Minnesota, County of Benton

At the corner location shown on the sketch:

- On 06/29/06 found a 1/2" PIPE CAPPED 12684
DATE
- left monument as found lowered monument removed monument (explain)
- On _____ placed an _____
DATE



27
34

Statement of evidence for this corner location is on back of this page.

I hereby certify that this document was researched and prepared by me or under my direct supervision and that I am a licensed Land Surveyor under the laws of the State of Minnesota.

Signature Jerome C. Wittstock Date 8-19-2014 License No. 19552

Title: Land Surveyor Professional Engineer County Surveyor County Engineer

Benton County Surveyor's Office
 Jerome C. Wittstock, County Surveyor
 Minnesota License No. 19552

Statement of Evidence:**B341**

North Quarter Corner of Section 34, Township 38 North, Range 29 West, Alberta Township, 4th Principal Meridian, Benton County, Minnesota.

1855 Original US General Land Office survey set a wood post at this location and bearing trees were recorded.

8" Sugar	S 34 ½ W	18 links
12" Linden	N 56 W	38 links

1895 County Surveyor's Record Book 2, page 236, shows a survey by Felix Parent of Section 34. He notes the corner was set lost measuring 77.36 chains (5105.76 feet) between section corners with the following tie:

6" Blk Ash	N 21 E	19 links
------------	--------	----------

No Date County Surveyor's Record Book 2, page 236, notes the following reference ties:

FP	S	59.8
SE Cor School	NW	105.5

2003 Westwood Professional Services, Inc. searched corner area in center of east-west road and field lines north-south and found a spike. Old school has been removed, but found what appeared to be the SE corner of the foundation. From the spike we measured N 38 W 101.3 feet to the foundation. We measured 5126.80 feet between section corners and found the spike to be 7.04 feet north and 20.22 feet west of the lost position. From the lost position measured N 43 W 119.8 feet to the foundation corner. Since Parent set the corner lost in 1895, did not accept the spike as the corner. Assume the undated notes are from the Highway Department to an assumed corner position. Established the corner position by lost method, midway and on line between section corners, and set a ½ " iron pipe with cap No. 12684.

County Coordinates Obtained by GPS to Lost Position
 NAD 83 (1996 Adjustment)
 N- 169792.588
 E- 529238.965

2006 The Benton County Surveyor's Office found the iron pipe capped 12684 set in 2003, verified the coordinates and established reference ties.