

424517

Certified, Filed and or Recorded on
August 15, 2017 3:06 PM

BENTON COUNTY MINNESOTA
CHERYL L. KANTOR
COUNTY RECORDER

By: KB

6 - V - 1

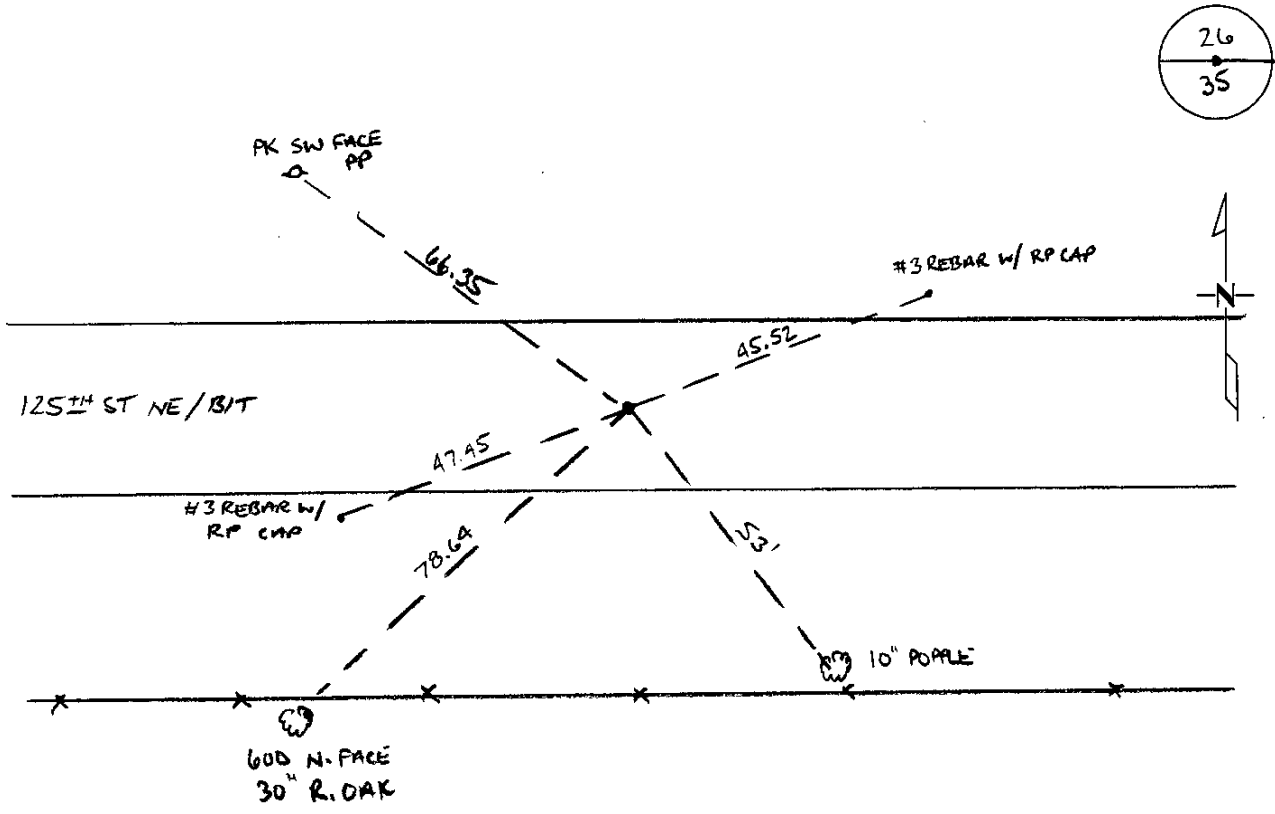
CERTIFICATE OF LOCATION OF GOVERNMENT CORNER

NORTH QUARTER Corner of Section 35, Township 38 North, Range 29 West, Fourth
Principal Meridian, Benton County, Minnesota.
At this corner location shown on the sketch:

On 11/18/2014 found a CAST IRON MONUMENT

left monument as found lowered monument removed monument (explain)

On _____ placed an _____



Statement of evidence for this corner location is on back of this page.

I hereby certify that this document was researched and prepared by me or under my direct supervision and that I am a Licensed Land Surveyor under the laws of the State of Minnesota.

Signature Jerome C. Wittstock
Jerome C. Wittstock, P.S., CFedS
License No. 19552

Date: 15 August 2017

Benton County Surveyor's Office
 Jerome C. Wittstock, County Surveyor
 Minnesota License No. 19552

Statement of Evidence:**B351**

North Quarter Corner of Section 35, Township 38 North, Range 29 West, Alberta Township, 4th Principal Meridian, Benton County, Minnesota.

1855 Original US General Land Office survey set a wood post at this location and bearing trees were recorded.

9" Sugar	S 27 ½ E	10 links
9" Sugar	N 67 E	22 links

1963 Benton County Highway Department notes a distance of 2630.7 feet to the NW corner Sec 35 and a distance of 2667.1 feet to the NE corner Sec 35.

County Surveyor's Record Book 2, page 304, notes the following reference ties to an iron:

10" Elm	SE	79.2
24" Elm	SW	81.3

1993 Sidney Williamson, LS 10918, found a ½" solid iron at the centerline of roads east/west and a fence line north. He replaced it with a cast iron monument and filed a Certificate of Location (#223489). He notes a distance of 2631.38 feet to the NW corner Sec 35 and a distance of 2667.90 feet to the NE corner Sec 35.

2008 The Benton County Surveyor's Office found the cast iron monument set in 1993 from a found 1/2" iron rod in the east-west centerline of CSAH No 14 on a fence to the north.. The distance to the northeast corner, another found iron, measures 2668.20 feet fitting the 1963 and 1993 distances within about a foot. Since the found cast iron monument fits the location of the corner since 1963, it's accepted as marking the corner location.

County Coordinates Obtained by GPS
 NAD 83 (1996 Adjustment)
 N- 169735.234
 E- 534431.766

2014 The Benton County Surveyor's Office found the cast iron monument and verified the 2008 coordinates. No remains of the 1855 or 1963 bearing trees were found.

CERTIFICATE OF LOCATION OF GOVERNMENT CORNER

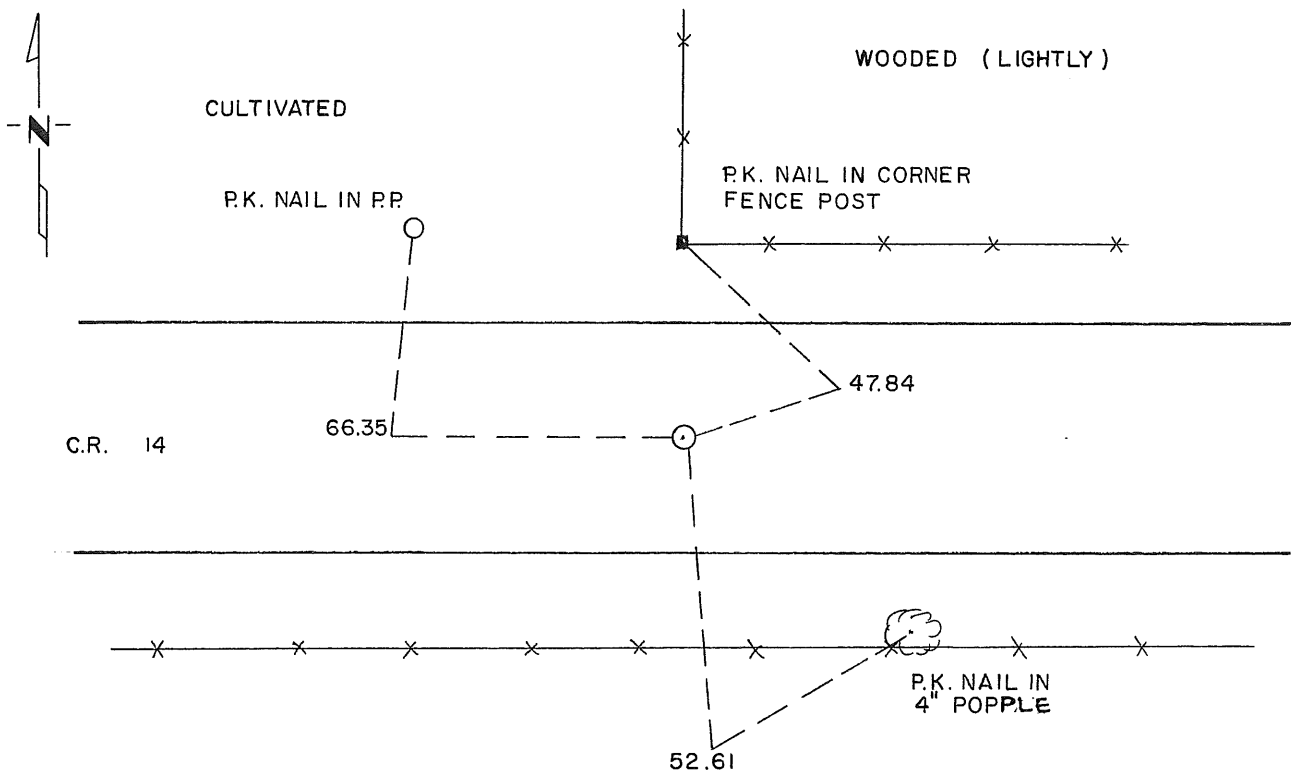
NORTHQUARTER Corner of Section 35, Township 38, Range 29, _____ P.M.

STATE OF MINNESOTA, County of BENTON

At the corner location shown on the sketch:

- On 4-27-93 found a 1/2" SOLID IRON
DATE MONUMENT
- left monument as found, lowered monument, removed monument (explain)
- On 6-17-93 placed a STANDARD CAST IRON MONUMENT
DATE

SKETCH OF REFERENCE TIES



Statement of evidence relative to this corner location is on back of page.

I hereby certify that this document and the data contained herein was prepared by me or under my direct supervision.

Sidney P. Williamson 5/24/94
SIGNATURE DATE

Registration No. 10918

- Land Surveyor, Professional Engineer
- County Surveyor, County Engineer

OFFICE OF THE COUNTY RECORDER

County of _____

I hereby certify that this document was filed in the Co. Recorders office at _____ .M. on the _____ day of _____ A.D., 19 ____

County Recorder _____

By _____, Deputy

DOCUMENT NO. _____

Statement of Evidence:

1. Original Government Survey was performed in 1855.
2. Benton County Survey Records indicate an iron in 1963.
3. In 1963, the Highway Department measured 2630.7 to the northwest corner and 2667.1 to the northeast corner.
4. On April 27, 1993, Williamson-Kotsmith, Inc. found a ½ inch solid iron it measures 2631.38 from the northwest corner and 2667.90 feet to the northeast corner.
5. On June 17th, 1993 Williamson-Kotsmith, Inc removed iron and set a Standard Cast Iron Monument at the same location.

223489

OFFICE OF
BENTON COUNTY RECORDER
BENTON COUNTY, MN
CERTIFIED TO BE FILED
AND/OR RECORDED ON

JUN 17 1 10 PM '94

ALICE G. EMMERT
COUNTY RECORDER

BY *Jed* DEPUTY