

Certified, Filed and or Recorded on  
January 27, 2015 12:49 PM

BENTON COUNTY MINNESOTA  
MARTILYN J NOVAK  
COUNTY RECORDER

By: CK

6 - V - I

# CERTIFICATE OF LOCATION OF GOVERNMENT CORNER

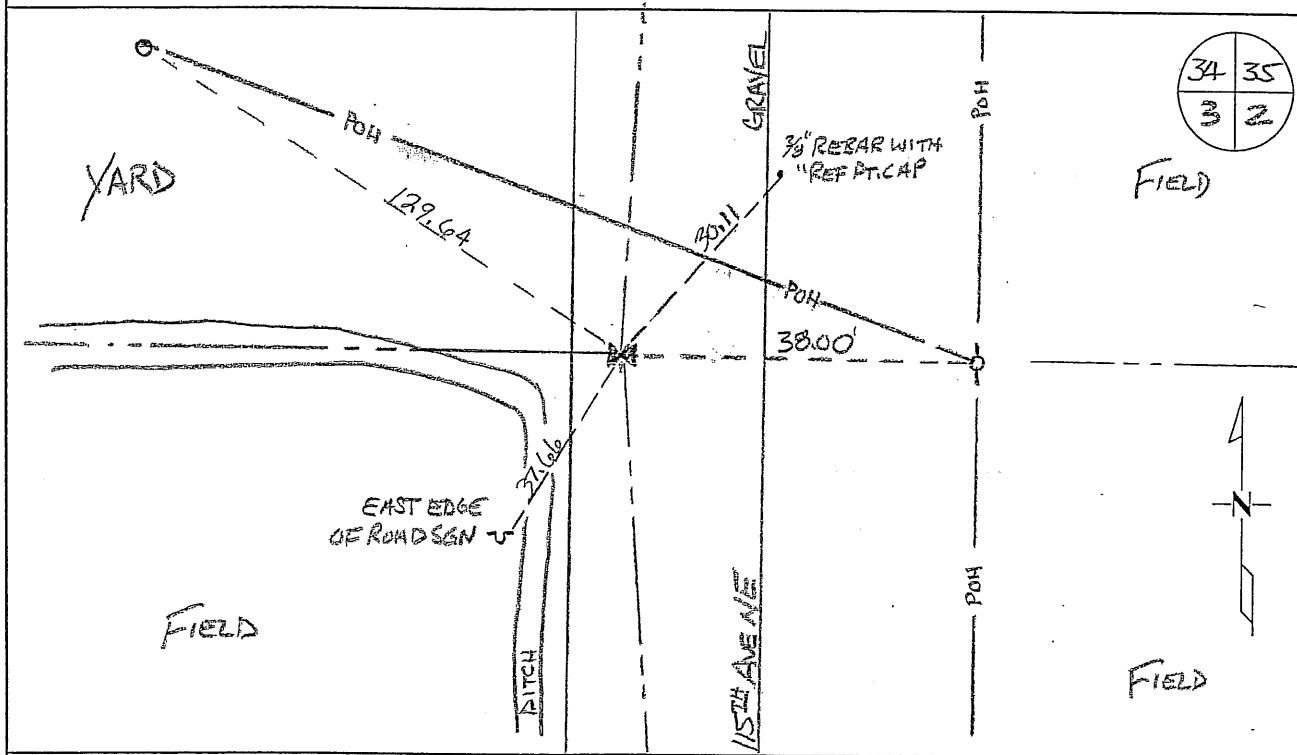
NORTHEAST Corner of Section 3, Township 38, Range 29  
4TH Principal Meridian, State of Minnesota, County of Benton

At the corner location shown on the sketch:

On 09/05/2010 found a CAST IRON MON. ON N/S CENTERLINE P.I.

left monument as found       lowered monument       removed monument (explain)

On \_\_\_\_\_ placed an \_\_\_\_\_



Statement of evidence for this corner location is on back of this page.

I hereby certify that this document was researched and prepared by me or under my direct supervision and that I am a licensed Land Surveyor under the laws of the State of Minnesota.

Signature: Jerome C. Wittstock  
Benton County Surveyor  
License No. 19552

Date: 1/27/2015

Benton County Surveyor's Office  
 Jerome C. Wittstock, County Surveyor  
 Minnesota License No. 19552

**Statement of Evidence:**

B032

Northeast Corner of Section 3, Township 38 North, Range 29 West, Alberta Township,  
 4<sup>th</sup> Principal Meridian, Benton County, Minnesota.

1849 Original US General Land Office survey set a wood post and bearing trees noted  
 as

4" Tamarack	N 13 ½ E	121 links
4" Tamarack	N 14 ½ W	36 links
4" Tamarack	S 18 E	27 links

Line trees were noted as a 8" Tamarack East 20.23 chains and  
 a 12" Tamarack West 20.28 chains.

1907 County Road Book, pages 4-6, contains a road survey by Felix Parent, County  
 Surveyor, for State Road. Survey shows corner found and road run from south.  
 Stationing gives distance of 2701 feet to the East ¼ corner of Section 3. Notes  
 say road continues north in Morrison County.

193? County Highway records: Elletson notes a hub with the following reference ties:

FP	NE	36.5
TP	SE	41.0

1992 William Lunser, LS 9394, set a cast iron monument at a fence line east, a ditch  
 west and the centerline of a road north/south. He filed a Certificate of Location  
 (#234195) and notes a distance of 2665.90 feet to the North ¼ corner of Section 3  
 and a distance of 2733.70 feet to the East ¼ corner of Section 3.

2010 Westwood Professional Services found a cast iron monument and measured  
 2666.06 feet to the north quarter corner, and 2733.88 to the east quarter corner of  
 section 3. The Morrison County records were searched and no surveys were  
 found. The cast iron monument is accepted as marking the corner position.

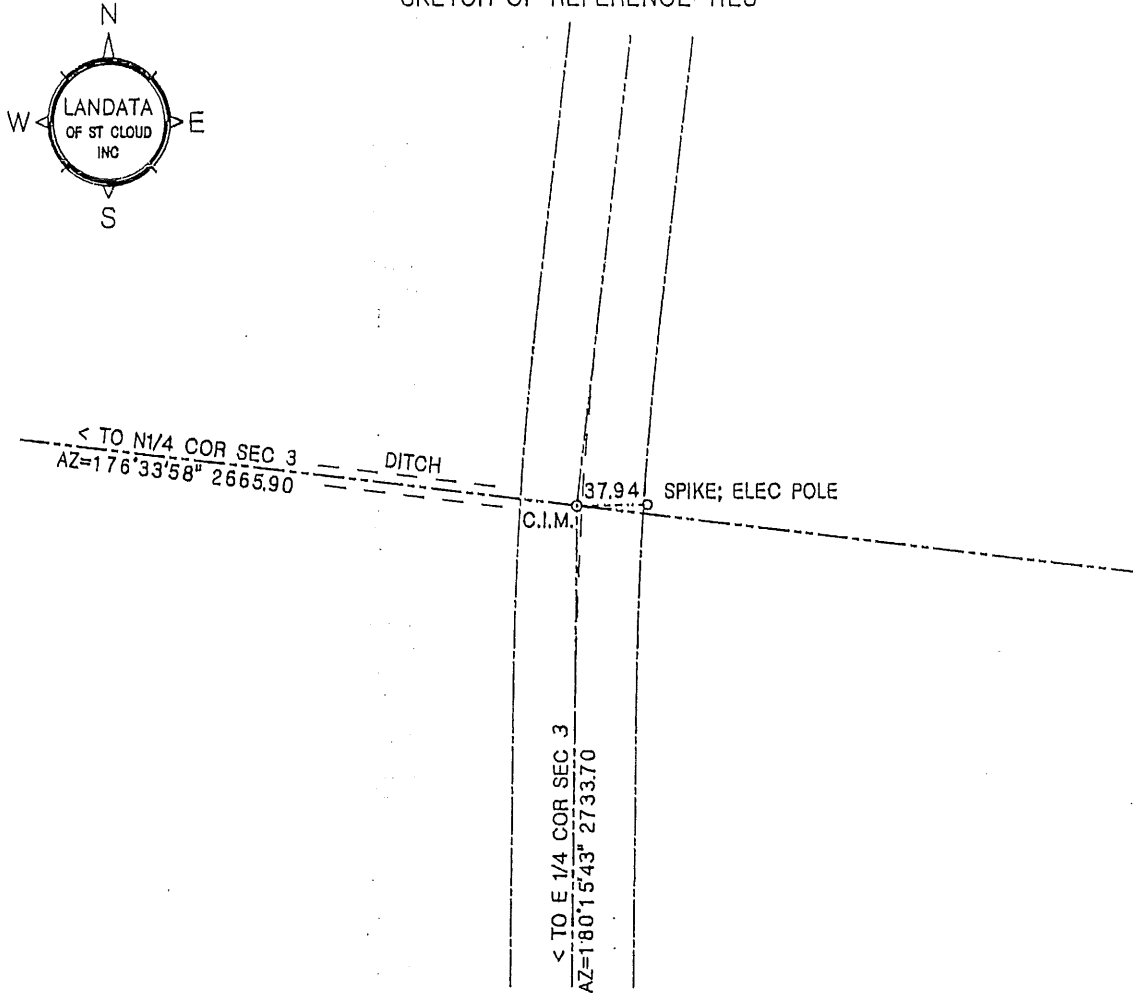
Coordinates Obtained by GPS  
 NAD 83 (1996 Adjustment)  
 N-196474.157  
 E-531167.113

# CERTIFICATE OF LOCATION OF GOVERNMENT CORNER

NORTHEAST corner of Section 3, Township 38, Range 29, 4th P.M.  
Benton/Morrison County, Minnesota.

On Mar 26, 1992, A cast iron monument (C.I.M.) was placed at this location.

## SKETCH OF REFERENCE TIES



Statement of evidence relative to this corner location on back of page

I hereby certify that this document and the data contained herein was prepared by me or under my direct supervision.

*William F. Lunser* 3/13/96

William F. Lunser, L.S. Date  
Mn Reg No 9394

FB; 135/35 DISC; 14

OFFICE OF THE COUNTY RECORDER  
Benton/Morrison County, Minnesota

I hereby certify that this document was filed in this office at \_\_\_:\_\_\_ M. on the \_\_\_ day of \_\_\_\_\_, 19\_\_\_.

County Recorder \_\_\_\_\_

By \_\_\_\_\_, Deputy

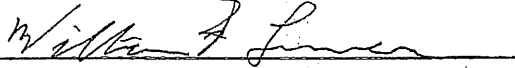
DOCUMENT NO. \_\_\_\_\_

STATEMENT OF EVIDENCE:

No records were found to indicate use or remonumentation of this corner after its original placement by the U.S. Government Survey.

A search of the area failed to uncover a marker. Occupation lines consist of fence line east, ditch west and north-south road.

After comparing measured distances to those of the G.L.O. I consider this corner obliterated with the fence and road as accessories.

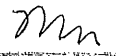
  
William F. Lunser, L.S.

2 3 4 1 9 5

BENTON COUNTY RECORDER  
BENTON COUNTY, MN  
CERTIFIED TO BE FILED  
AND/OR RECORDED ON

APR 10 2 37 PM '96

ALICE O. ENGELMEYER  
COUNTY RECORDER

BY  DEPUTY *X.M.*