

Certified, Filed and or Recorded on
July 29, 2014 12:58 PM

BENTON COUNTY MINNESOTA
MARILYN J NOVAK
COUNTY RECORDER

By: CK

6 - V - I

CERTIFICATE OF LOCATION OF GOVERNMENT CORNER

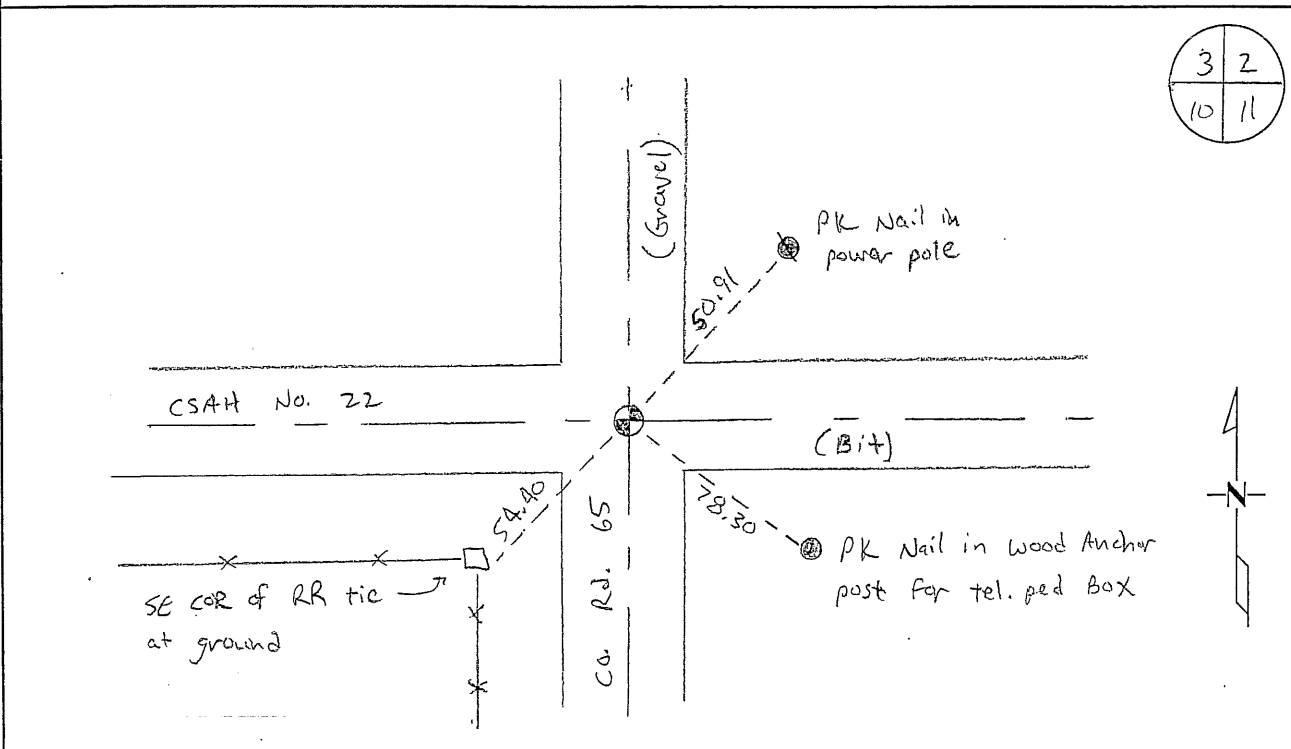
NE Corner of Section 10, Township 38, Range 29
4TH Principal Meridian, State of Minnesota, County of Benton

At the corner location shown on the sketch:

On 4/5/2010 found a PK Nail

left monument as found lowered monument removed monument (explain)

On _____ placed an _____



Statement of evidence for this corner location is on back of this page.

I hereby certify that this document was researched and prepared by me or under my direct supervision and that I am a licensed Land Surveyor under the laws of the State of Minnesota.

Signature Jerome C. Wittstock
Benton County Surveyor
License No. 19552

Date: 7-29-2014

Benton County Surveyor's Office
 Jerome C. Wittstock, County Surveyor
 Minnesota License No. 19552

Statement of Evidence:**B102**

Northeast Corner of Section 10, Township 38 North, Range 29 West, Alberta Township, 4th
 Principal Meridian, Benton County, Minnesota.

- 1855 Original US General Land Office survey set a wood post at this location and bearing trees were recorded.
 12" Elm N 73 E 20 links
 16" Poplar S 44 W 6 links
- Undated County Surveyor's Record Book 2, page 242 notes the following reference ties to an oak stake and an I.M.
 TP SE 100.5 TP SW 98.3
- 1907 County Road Book, pages 4-6, contains a road survey by Felix Parent, County Surveyor, for State Road. Survey shows corner found "drove 1 ¼" x 16" gas pipe in place of old post". Road runs north-south
- 1912 County Surveyor's Record Book 2, page 231 notes the following reference ties to a stone over an I.M.
 10" B Ash S 35 W 62.5 feet 12" W Oak S 76 W 64.5 feet
 Later ties added:
 10" Oak NE 109.7 feet
 SW Cor School Foundation 155.1 feet
- 1939 County Engineer's Notebook No. 128 contains survey of CAR 22 running east to west on section line. Corner is shown as an iron in center of 4-way road intersection. Ties:
 10" Oak NE 109.7 feet
 SW Cor School Foundation NE 155.1 feet
- 1958 County Surveyor's Record Book 2, page 256, notes the following reference ties to an iron pipe:
 10" Oak NE 109.7 feet TP SE 112.9 feet
- 1958 County Engineer's Notebook No. 207 contains a survey for CSAH No. 22 running west to east on the section line. Corner is shown as an iron in center of road with CR 65 running north-south. Ties are the same as listed below in 1960.
- 1960 County Surveyor's Record Book 2, pages 240 & 256 notes the following reference ties to an iron pipe.
 SW Cor School Foundation NE 155.1
 TP SE 83.7
 PP NE 82.25
 TP SW 49.3
- 1978 Paul Wellen, LS 10461, found a ½" I.P. at a north/south and east/west centerline. He filed a Certificate of Location (#151872).
- 1992 William Lunser, LS 9394, notes a distance of +/-2671.2 feet to the East ¼ corner of Section 3 per Doc. No. 234196.
- 2010 The County Surveyor's Office found a PK at a north/south and east/west centerline. The ties from earlier years were searched for and only the PP from 1960 was found fitting the distance to the PK Nail within 0.3 feet. Distance to the east quarter of section 3 measures 2671.08. None of the ties from Wellen's certificate were found.

Coordinates Obtained by GPS
 NAD 83 (1996 Adjustment)
 N-191087.903
 E-531616.190

CERTIFICATE OF LOCATION OF GOVERNMENT CORNER

I did set the North-^{east} Corner of Section 10, Township 38, Range 29, 4 P.M.

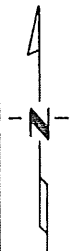
STATE OF MINNESOTA, County of Benton

At the corner location shown on the sketch: evidenced by a 1/2 " iron pipe, at the intersection of the center lines of County Road No. 22 and County Road No. 65. On 10-17-79 found a 1/2" iron pipe
DATE

left monument as found, lowered monument, removed monument (explain)

On _____ placed a _____
DATE

SKETCH OF REFERENCE TIES



Refer to next page

Statement of evidence relative to this corner location is on back of page.

I hereby certify that this document and the data contained herein was prepared by me or under my direct supervision.

Paul E. Wellen

SIGNATURE

DATE

Registration No. 10461

Land Surveyor, Professional Engineer

County Surveyor, County Engineer

County Recorder
OFFICE OF THE ~~REGISTER OF DEEDS~~
Benton
County of _____

I hereby certify that this document was filed in the Reg. of Deeds office at 10 A.M. on the 26 day of March A.D., 19 79

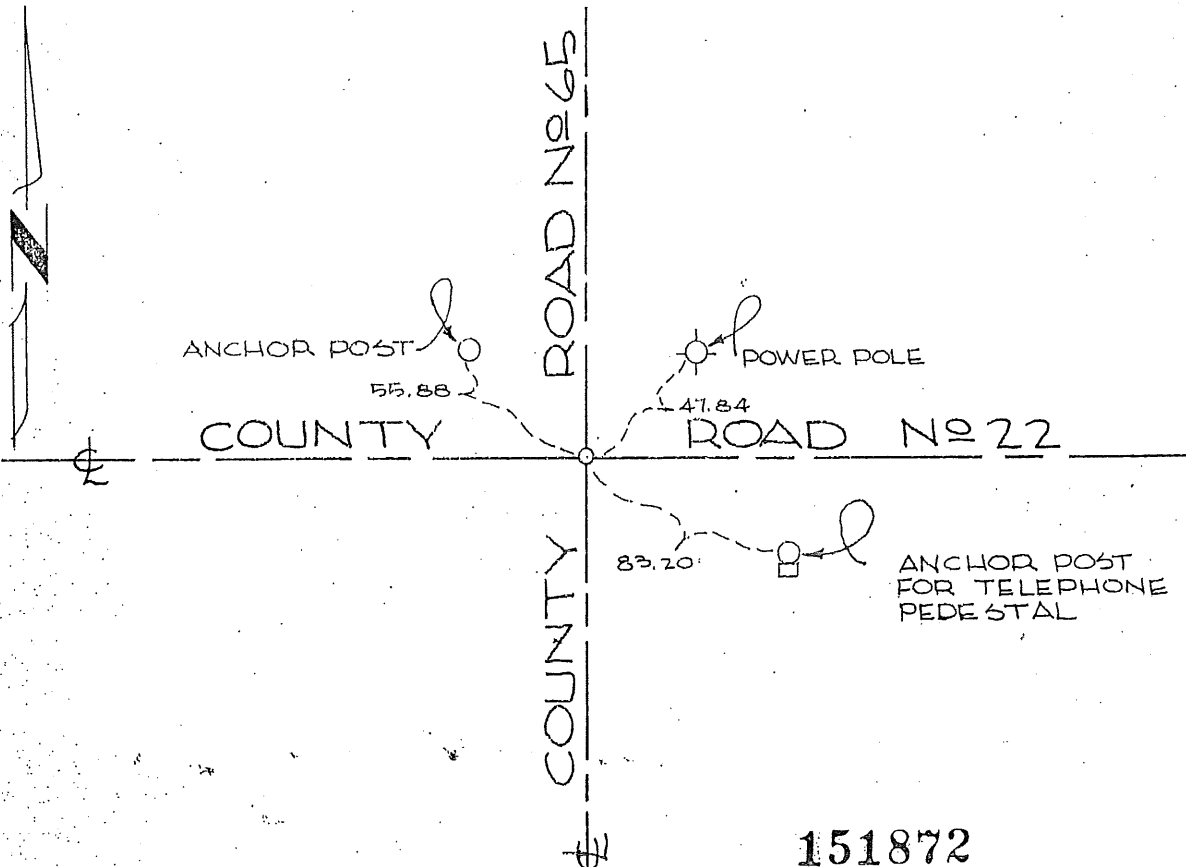
Register of Deeds W.A. Johnson
By _____, Deputy

DOCUMENT NO. 151872

CERTIFICATE OF LOCATION OF GOVERNMENT CORNER

I hereby certify that on the 17 day of October, 19 78
I did set the Northeast corner of Section 10,
Twp. 38, Rg. 29, Benton County, Minnesota, which
was evidenced by a 1/2" iron pipe, at the intersection of the center lines
of County Road No. 22 and County Road No. 65.

I further certify that in order to perpetuate said corner I did
at the exact location thereof place a permanent marker consisting
of a 1/2" iron pipe and that
I did establish witness or reference monuments as shown below:



I hereby certify that the above
is true and correct and that I am
a registered Land Surveyor under
the laws of the State of Minnesota.

Daryl Nelson

Minn. Registration No. 10461

Office of the County Recorder,
Benton County, Minn.

I hereby certify that the within instrument
was filed for record in this office on the
26th day of March, 1979.

F. A. Johnson
County Recorder

By _____ Deputy.