

CERTIFICATE OF LOCATION OF GOVERNMENT CORNER

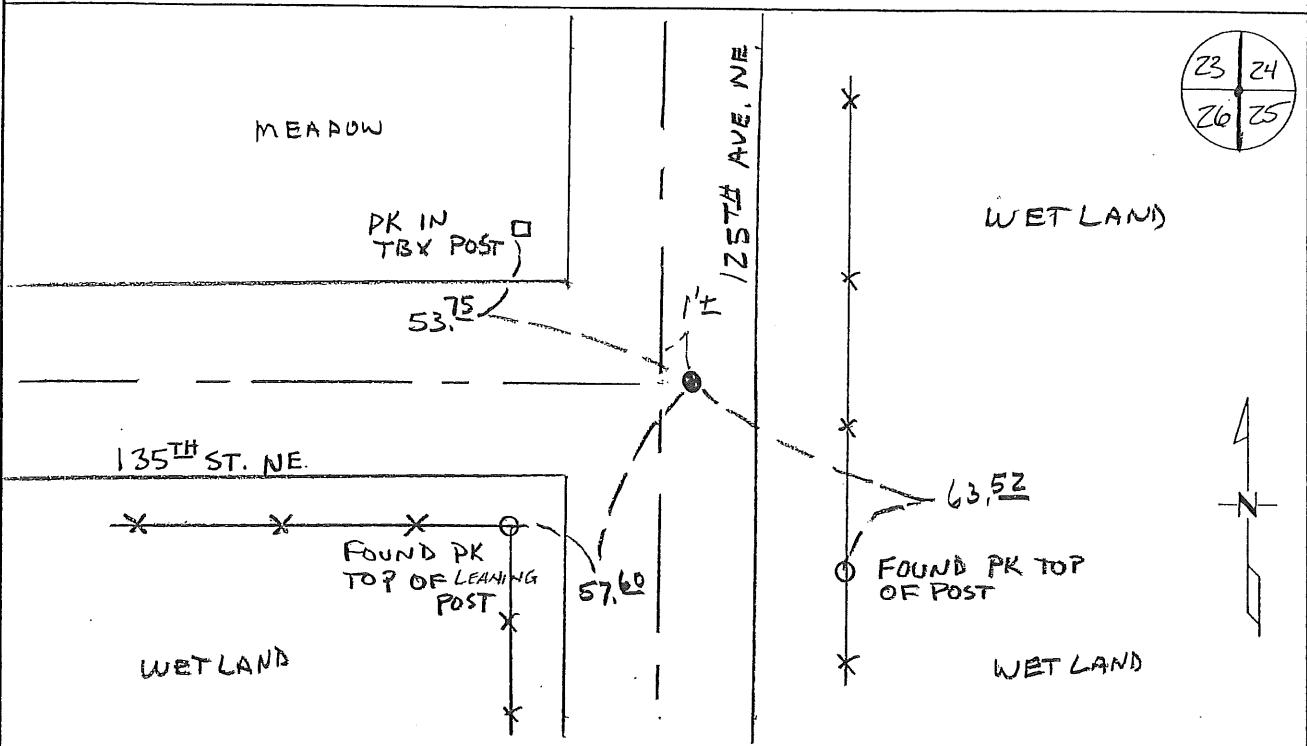
NORTHEAST Corner of Section 26, Township 38, Range 29
4TH Principal Meridian, State of Minnesota, County of Benton

At the corner location shown on the sketch:

On 11-12-08 found a 3/4" SOLID IRON PIPE

left monument as found lowered monument removed monument (explain)

On _____ placed an _____



Statement of evidence for this corner location is on back of this page.

I hereby certify that this document was researched and prepared by me or under my direct supervision and that I am a licensed Land Surveyor under the laws of the State of Minnesota.

Signature Ch. [Signature]
Deputy County Surveyor
License No. 43932

Date: 12/17/08

Statement of Evidence:

B262

Northeast Corner of Section 26, Township 38 North, Range 29 West, Alberta Township,
4th Principal Meridian, Benton County, Minnesota.

- 1855 Original US General Land Office survey set a wood post at this location and bearing trees were recorded.
- | | | |
|-------------|----------|----------|
| 7" Tamarack | N 68 E | 28 links |
| 6" Tamarack | N 23 ½ W | 42 links |
- 1924 County Surveyor's Record Book 2, page 284 and Record Book A, Map No. 46, shows a survey subdividing Section 24. Corner is shown, but no indication of type of monument.
- 1944 County Engineer's Notebook No. 157 contains road survey for CAR No. 43 running north to south along the section line. Corner is shown as a hub set in center of road with town road west. Ties:
- | | | |
|----|----|-------|
| TP | SW | 60.4' |
|----|----|-------|
- Undated Highway tie:
- | | | |
|---------|---|------|
| Mailbox | E | 8.45 |
|---------|---|------|
- County Surveyor's Record Book 2, page 288, contains tie:
- | | | | |
|----|----|----|-------------|
| TP | NW | 29 | (Older tie) |
|----|----|----|-------------|
- 1963 Benton County Highway Department records show an iron at the centerline of roads north/south/west. Ties in Notebook No. 157:
- | | | |
|-----------|----|------|
| TP | SW | 64.0 |
| 8" Poplar | SW | 80.8 |
- 1993 Sidney Williamson, LS 10918, found a ¾" solid iron at the centerline of roads north/south/west and replaced it with a cast iron monument. He filed a Certificate of Location (#223483).
- 2008 Westwood Professional Services, Inc. found a ¾" solid iron pipe fitting 1993 Williamson ties. Solid iron pipe is accepted as marking the obliterated position for this corner.
- County Coordinates Obtained by GPS
NAD 83 (1996 Adjustment)
N-175094.225
E-537015.059

CERTIFICATE OF LOCATION OF GOVERNMENT CORNER

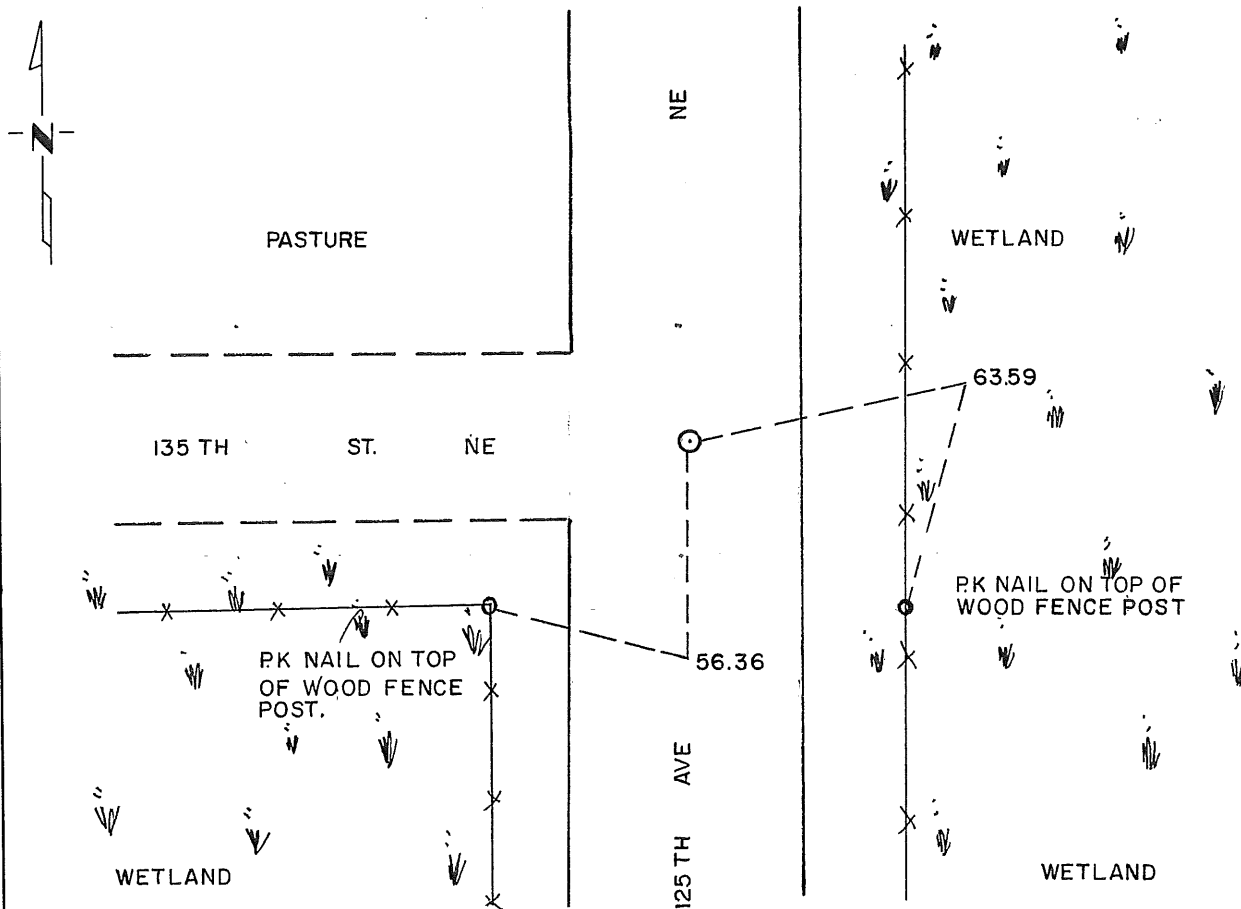
NORTHEAST Corner of Section 26, Township 38, Range 29, _____ P.M.

STATE OF MINNESOTA, County of BENTON

At the corner location shown on the sketch:

- On 4-27-93 found a 3/4" SOLID IRON
DATE
- left monument as found, lowered monument, removed monument (explain)
- On 6-17-93 placed a STANDARD CAST IRON MONUMENT
DATE

SKETCH OF REFERENCE TIES



Statement of evidence relative to this corner location is on back of page.

I hereby certify that this document and the data contained herein was prepared by me or under my direct supervision.

Sidney P. Williamson 5/21/94
SIGNATURE DATE

Registration No. 10918

Land Surveyor, Professional Engineer

County Surveyor, County Engineer

OFFICE OF THE COUNTY RECORDER

County of _____

I hereby certify that this document was filed in the Co. Recorders office at _____ .M. on the _____ day of _____ A.D., 19 _____

County Recorder _____

By _____, Deputy

DOCUMENT NO. _____

Statement of Evidence:

1. In 1855, the Original Government Survey was performed.
2. A search of Benton County Survey records showed a stake at this corner.
3. In 1963, Benton County Highway Department showed an iron at the intersection of C.R. 14 and Township Road to the west.
4. On June 17, 1993, Williamson-Kotsmith, Inc. found a 3/4 inch solid iron at this location.
5. On June 17, 1993, Williamson-Kotsmith, Inc. removed 3/4 inch solid iron and set a Standard Cast Iron Monument at this location.

223483

OFFICE OF
BENTON COUNTY RECORDER
BENTON COUNTY, MN
CERTIFIED TO BE FILED
AND/OR RECORDED ON

JUN 17 1 09 PM '94

ALICE G. SMITH NEYER
COUNTY RECORDER

BY *Jan* DEPUTY