

409207

Certified, Filed and or Recorded on
April 29, 2015 2:20 PM

BENTON COUNTY MINNESOTA
MARILYN J NOVAK
COUNTY RECORDER

By: *ML*

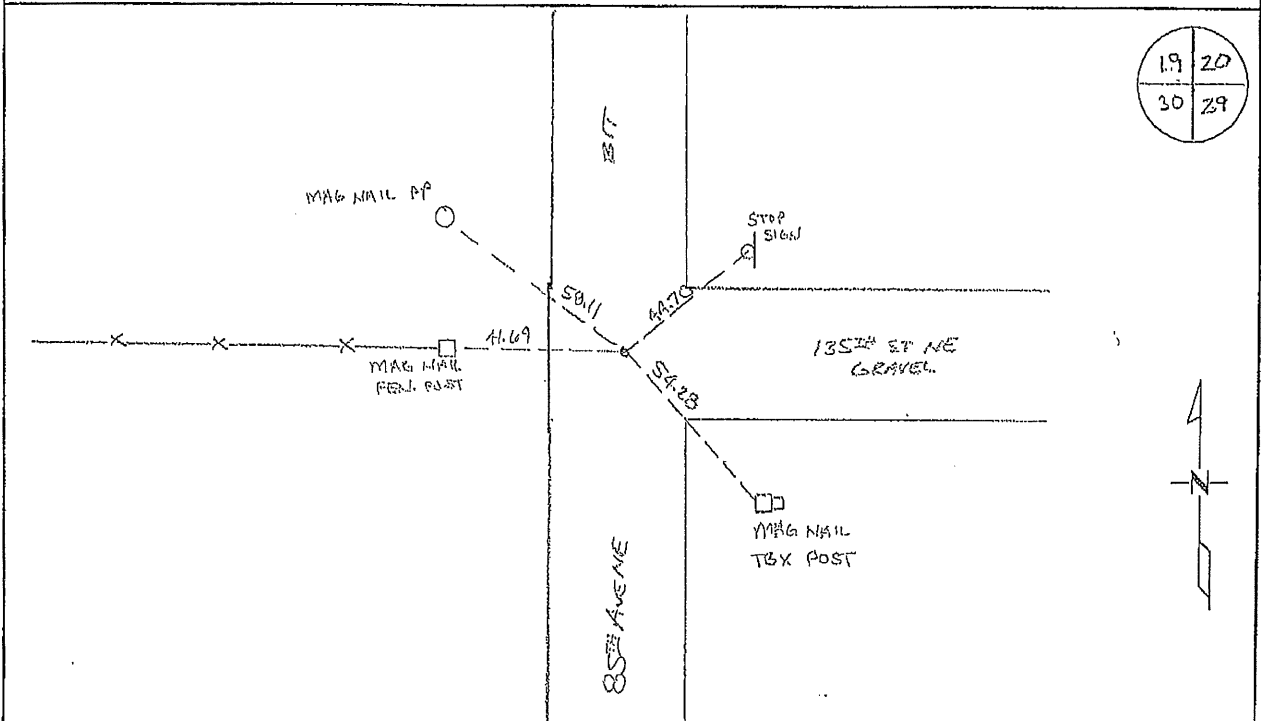
G - V - I

CERTIFICATE OF LOCATION OF GOVERNMENT CORNER

NORTHEAST Corner of Section 30, Township 38, Range 29
4TH Principal Meridian, State of Minnesota, County of Benton

At the corner location shown on the sketch:

- On _____ found a _____
- left monument as found lowered monument removed monument (explain)
- On 03/24/2015 placed an MAG NAIL / BENTON COUNTY WASHPOST OVER
FOUND MONUMENT



Statement of evidence for this corner location is on back of this page.

I hereby certify that this survey, plan, or report was prepared by me or under my direct supervision and that I am a duly Licensed Land Surveyor under the laws of the state of Minnesota.

Signature Jerome C. Wittstock
Jerome C. Wittstock, PS, CFedS, Benton County Surveyor
License No. 19552

Date: 4/29/2015

Benton County Surveyor's Office
 Jerome C. Wittstock, County Surveyor
 Minnesota License No. 19552

Statement of Evidence:

B302

Northeast Corner of Section 30, Township 38 North, Range 29 West, Alberta Township,
 4th Principal Meridian, Benton County, Minnesota.

1855 Original US General Land Office survey set a wood post at this location and bearing trees were recorded.

10" Blk Ash	N 8 ½ E	134 links
12" W Birch	N 10 W	126 links

1916 County Surveyor's Record Book 2, pages 234, 296, and 297, shows a survey by J.P. Soderstrum to settle dispute of line between Sections 29 and 30. He notes that he found a stone in the intersection of roads. He found the stone from testimony as being set by Parent 20 to 30 years ago from found Birch in meadow NW from which the stone is located. He notes the following ties:

TP	SE	89 links
TP	NE	84 links
N Edge plank Culvert	S	14 ½ links
E Edge plank Culvert	W	35 links

1935 County Engineer's Notebook No. 93 contains survey for Road running from south to north. Notes corner as a stone (large rock) and hub with town road running east and west. Ties:

TP	SE	58.9'
TP	NE	54.5'

1964 County Engineer's Notebook No. 246 contains survey for CSAH 11 running south to north on section line. Notes show corner marked by an iron in center of road with town road east and west. 1967 Ties:

PP	NW	58.0
TP	SE	54.45

1967 County Surveyor's Record Book 2, page 234, (also noted in Notebook No. 93) notes corner found and placed iron over a rock. Ties:

PP	NW	58.0
TP	SE	49.65
Mail Box P	SW	39.4

2001 Westwood Professional Services, Inc. found a 1" solid iron rod and located it using GPS. County Coordinates Obtained by GPS
 NAD 83 (1996 Adjustment)
 N- 174980.433
 E- 516122.001

2015 The Benton County Surveyor's Office set a Benton County Washer over the found 1" iron rod. The rod has a historical chain of evidence being set over a stone that was set from an original bearing tree. It is accepted as marking the obliterated corner position.