

Certified, Filed and or Recorded on
Feb. 12, 2010 AT 12:50PM

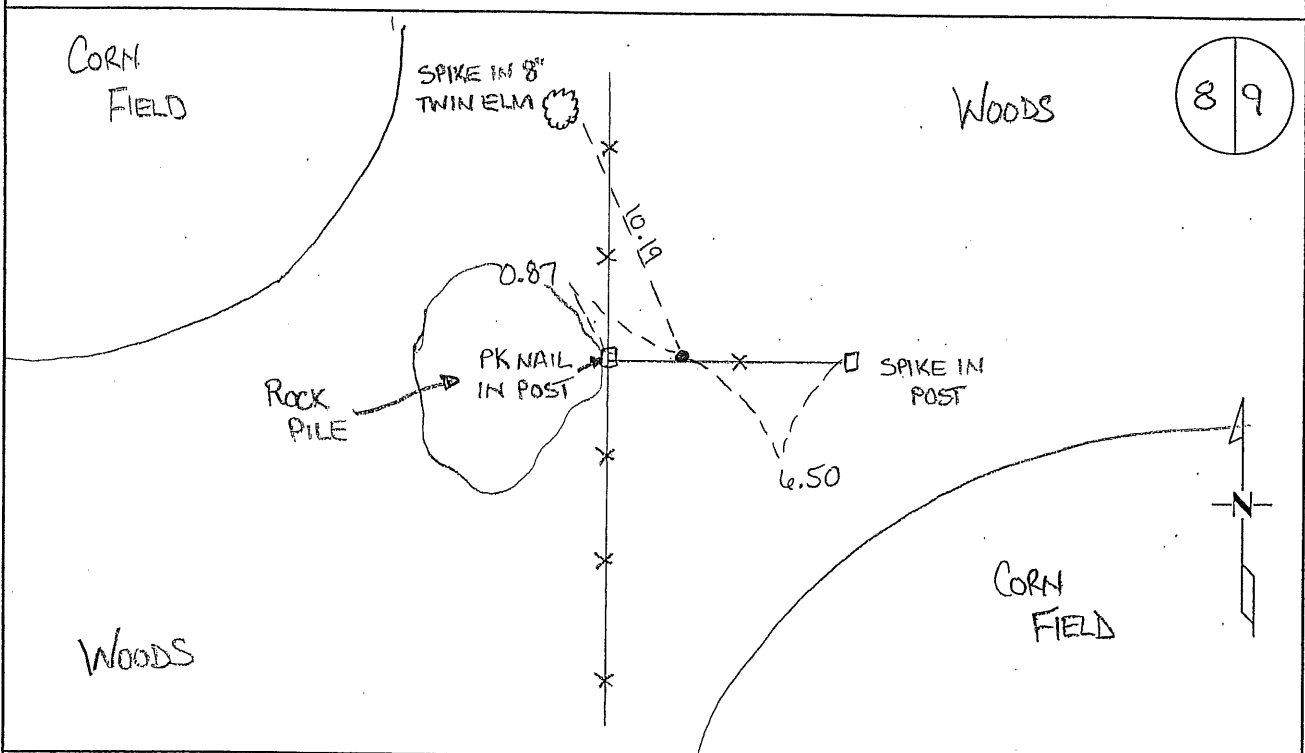
Signed: M
MARILYN J NOVAK G V I
BENTON COUNTY MINNESOTA
MARILYN J NOVAK
COUNTY RECORDER

CERTIFICATE OF LOCATION OF GOVERNMENT CORNER

EAST QUARTER Corner of Section 8, Township 36, Range 30
4TH Principal Meridian, State of Minnesota, County of Benton

At the corner location shown on the sketch:

- On 11/30/09 found a 1/2" OPEN PIPE
- left monument as found lowered monument removed monument (explain)
- On _____ placed an _____



Statement of evidence for this corner location is on back of this page.

I hereby certify that this document was researched and prepared by me or under my direct supervision and that I am a licensed Land Surveyor under the laws of the State of Minnesota.

Signature Jerome C. Wittstock
Benton County Surveyor
License No. 19552

Date: 02/05/2010

Benton County Surveyor's Office
 Jerome C. Wittstock, County Surveyor
 Minnesota License No. 19552

Statement of Evidence:**L083**

East Quarter Corner of Section 8, Township 36 North, Range 30 West, Minden Township, 4th Principal Meridian, Benton County, Minnesota.

1852 Original US General Land Office survey set a wood post at the corner location and bearing trees were recorded.

6" Bur Oak	S 76 ½ W	107 links
10" Aspen	N 23 ¾ E	1555 links

2002 No resurvey information was found on this corner in the Benton County records.

No Date Information from David Regan, LS 12236, shows an iron pipe at the corner, 2690.01 feet south of the NE corner. Believe this information is from M. Torborg, LS.

2004 BWK could not find iron pipe, but found that the distances from Regan fit fence corner. Computed corner based on distance of 2690.01 feet from the NE corner and 5302.88 feet from the West ¼ corner. Measured 2722.16 feet to the SE corner.

County Coordinates from BWK

NAD 83 (1996 Adjustment)

N- 124062.804

E- 489420.932

2009 Westwood Professional Services Inc., found a ½" iron pipe in agreement with the position reported by BWK at the intersection of fences north-south and east. A measurement of 2690.01 was made from the Northeast Corner and 5302.68 from the West Quarter Corner. The ½" pipe was accepted as marking the obliterated corner location. The 2004 coordinates were verified and reference ties were taken.