

Certified, Filed and or Recorded on
Feb. 12, 2010 AT 12:56PM

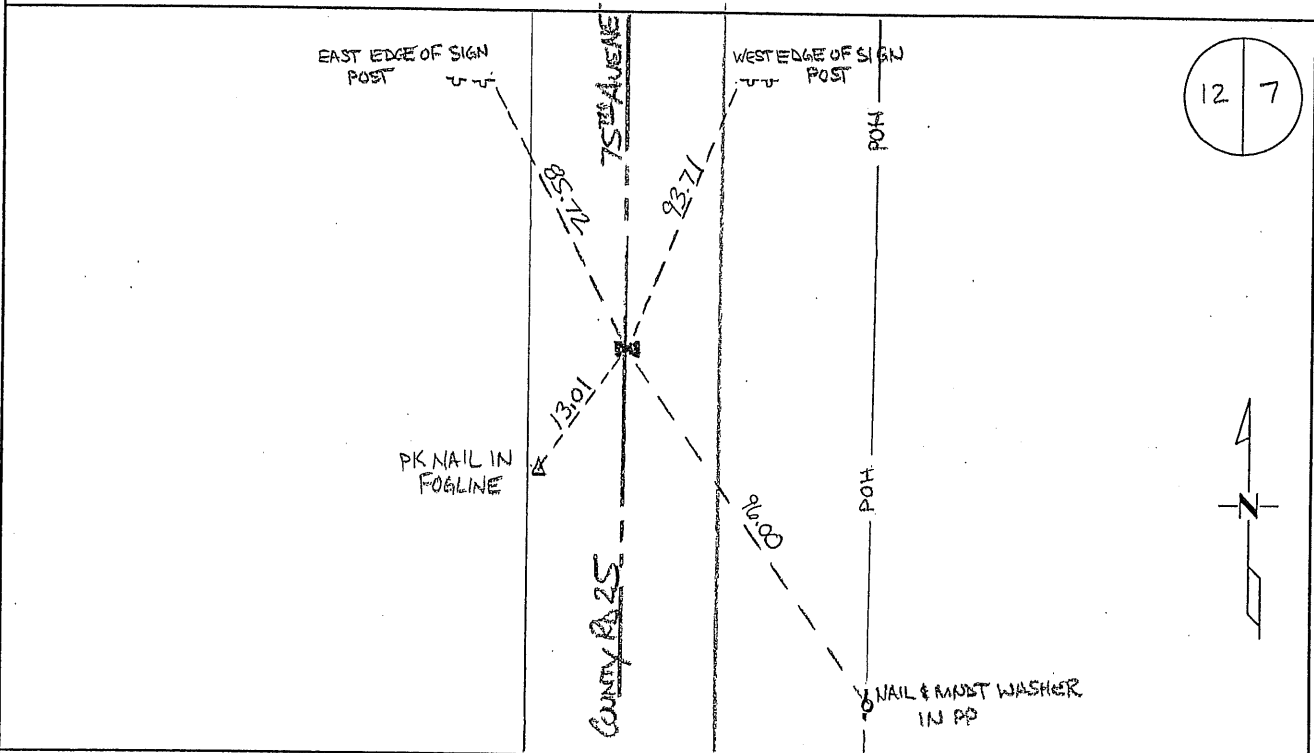
Signed: JM
MARILYN J NOVAK G V I
BENTON COUNTY MINNESOTA
MARILYN J NOVAK
COUNTY RECORDER

CERTIFICATE OF LOCATION OF GOVERNMENT CORNER

EAST QUARTER Corner of Section 12, Township 36, Range 30
4TH Principal Meridian, State of Minnesota, County of Benton

At the corner location, shown on the sketch:

- On 02/27/09 found a CAST IRON MONUMENT
- left monument as found lowered monument removed monument (explain)
- On _____ placed an _____



Statement of evidence for this corner location is on back of this page.

I hereby certify that this document was researched and prepared by me or under my direct supervision and that I am a licensed Land Surveyor under the laws of the State of Minnesota.

Signature Jerome C. Wittstock
Benton County Surveyor
License No. 19552

Date: 02/05/2010

Statement of Evidence:

L123

East Quarter Corner of Section 12, Township 36 North, Range 30 West, Minden Township, 4th Principal Meridian, Benton County, Minnesota.

- 1849 Original General Land Office survey established this corner and a wood post was set for the corner and bearing trees were recorded.
4" Blk Oak N 32 W 114 links
- 1930 County Engineer's Notebook No. 60 for CR 25 running north-south does not indicate a corner and gives a distance of 5315.5 feet for the east line of Section 12.
- 1940's(?) MN/DOT alignment map for TH 23 shows a distance of 2665.2 feet from this corner south to the Southeast corner of Section 12 and a distance of 1562.8 feet to the centerline. The map does not state what was used for the 1/4 corner. The map shows a rock marking a point 33 feet west of the 1/16th corner being 1328.2 feet north of the section corner, which would be 4.4 south of the split.
(Older alignment) Roll O-11, of the MN/DOT Highway plans for S.P.0503, File No. 10-11, note a distance of 1086.0 feet to the centerline.
- 1959 County Engineer's Notebook No. 208 contains a survey for CSAH No. 25 running south to north on the section lines. No corner is shown, but a fence line east is noted 1545 feet north of TH 23 and 2651.0 feet south of the NE corner.
- 2003 Research of Benton County Surveyor's records found no information on this corner.
- 2004 MN/DOT survey crew located occupation lines east and west of Co. Rd. 25. County Coordinates furnished by MN/DOT to occupation at center of north-south road and fence line east. Assumed this to be temporary corner.
NAD 83 (1996 Adjustment)
N- 124132.073
E- 510650.920
Projected fence line located a 1/4 mile west falls 13.5 feet south of temporary corner. From temporary corner measured 2666.93 feet to the SE corner, 2649.33 feet to the NE corner, 1555.6 feet to the centerline, and 1562.3 feet to the centerline tangent of TH 23. Lost position is 8.8 feet south of temporary corner. MN/DOT plans further excavation to search for monument. If no monument found, believe temporary position should be used as obliterated corner.
- 2005 On 6/14/05 dug corner area with County Highway Department backhoe. Kyle Klasen, MN/DOT, was present. An iron pipe with LS No. 9394 (Lunser) had been set at the temporary coordinates. Dug in center of road down 5 feet to well below natural ground and found no evidence of a corner monument. Accepted temporary corner position as the best evidence of the obliterated corner, agreeing well with old MN/DOT and County Highway information.
- 2009 Westwood Professional Services, Inc. located a CIM at the position of the temporary corner established in 2004 and 2005. A distance of 2649.32 feet was measured to the NE corner of Section 12 and 2666.92 feet to the SE corner of Section 12. A total distance of

A 372222

Benton County Surveyor's Office
Jerome C. Wittstock, County Surveyor
Minnesota License No. 19552

5316.24 agrees with the 1930 survey. A fence line west and occupation east agree well with the location of the north 1/16th corner. Reference ties were established.

County Coordinates

NAD 83 (1996 Adjustment)

N- 124132.081

E- 510651.109

