

Certified, Filed and or Recorded on  
Aug. 24, 2009 AT 08:16AM

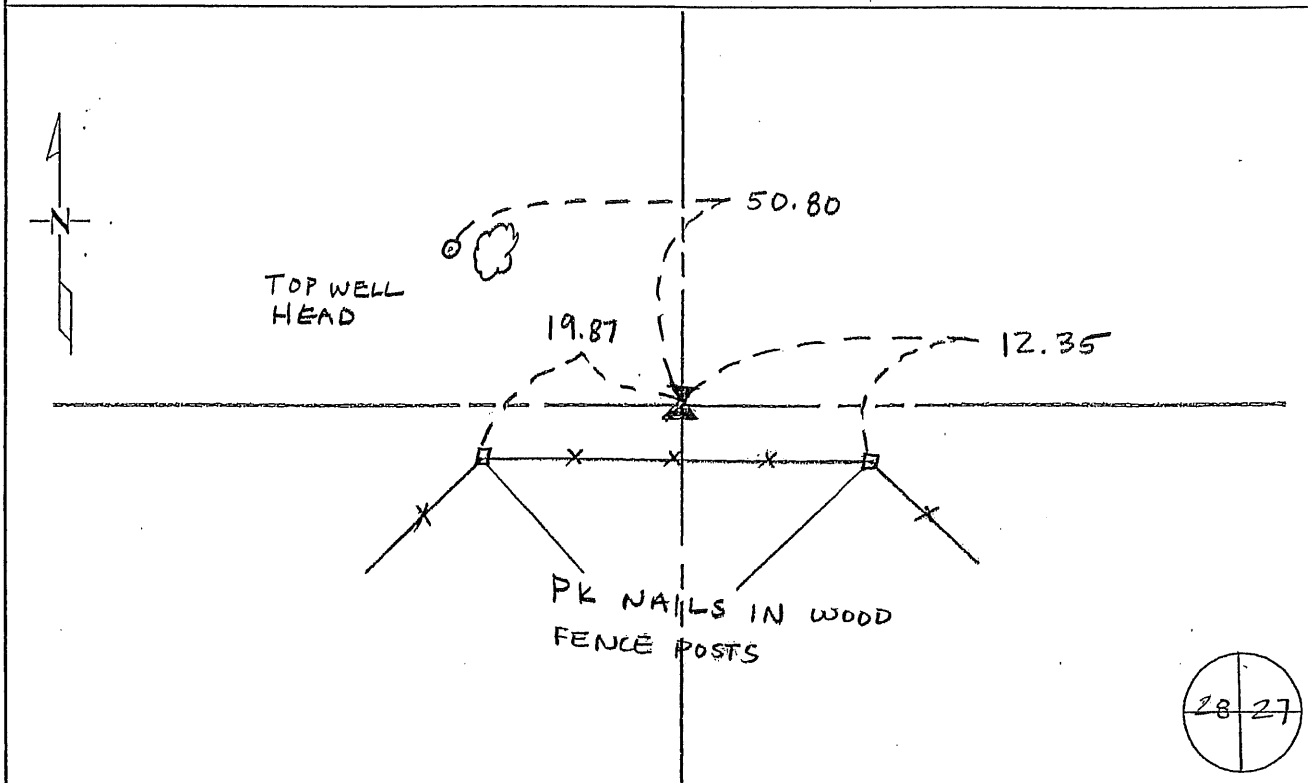
Signed: CK  
MARILYN J NOVAK G V I  
BENTON COUNTY MINNESOTA  
MARILYN J NOVAK  
COUNTY RECORDER

### CERTIFICATE OF LOCATION OF GOVERNMENT CORNER

EAST QUARTER Corner of Section 28, Township 36, Range 30  
4TH Principal Meridian, State of Minnesota, County of Benton

At the corner location shown on the sketch:

- On 01 APRIL 68 found a Cast Iron Monument  
DATE
- left monument as found     lowered monument     removed monument (explain)
- On \_\_\_\_\_ placed an \_\_\_\_\_  
DATE



Statement of evidence for this corner location is on back of this page.

I hereby certify that this document was researched and prepared by me or under my direct supervision and that I am a licensed Land Surveyor under the laws of the State of Minnesota.

Signature Jerome C. Wittstock Date 20 August 2009 License No. 19552

Title:  Land Surveyor     Professional Engineer     County Surveyor     County Engineer

Benton County Surveyor's Office  
 Jerome C. Wittstock, County Surveyor  
 Minnesota License No. 19552

**Statement of Evidence:**

L283

East Quarter Corner of Section 28, Township 36 North, Range 30 West, Minden Township, 4<sup>th</sup> Principal Meridian, Benton County, Minnesota.

- 1852 Original US General Land Office survey set a wood post at this location and bearing trees were recorded.  
       6" Blk Oak           S 32 W           55 links  
       6" Bur Oak           S 87 ¼ E 167 links
- 1922 MN/DOT right of way map indicates a monument at the corner, but does not reference it to the highway.
- 1947 MN/DOT right of way map calls for a field stone at the corner 532.0 feet south of the centerline at a fence intersection.
- No Date County ties to field stone marked with a ¾ " x 10" I.M.
- |                                |       |        |
|--------------------------------|-------|--------|
| 18" Burr Elm                   | SE    | 47.77' |
| 13" Elm                        | South | 35.91' |
| 1" Re-rod marked w/ 1 ½ " Pipe | SSW   | 4.77'  |
| C/L Well Casing Pipe-4"        | WNW   | 63.72' |
| NE corner Office Bldg.         | NW    | 89.86' |
- 1981 William Lunser, LS 9394, found corner marked by a field stone with drill hole. Left monument as found and filed a Certificate of Location (Doc. No. 158854). He shows distances of 2695.13 feet to the NE corner and 2695.58 feet to the SE corner of Section 28 with an angle of 179-54-23 on the east side.
- 1992 James Nielsen, LS 11865, found field stone with drill hole and 3 reference ties that fit the 1947 location. He filed a Certificate of Location (Doc. No. 216767).  
 MN/DOT plats & alignment maps note a field stone w/ a drill hole at the corner with fence lines north/south/east/west, 532.0 ft S to centerline, 2695.4 ft to NE corner Sec 28, with the following reference ties:
- |             |   |       |         |   |       |
|-------------|---|-------|---------|---|-------|
| 6" Boxelder | W | 11.0' | 14" Elm | E | 48.0' |
| 8" Elm      | S | 35.4' |         |   |       |
- County Coordinates from MN/DOT:  
 NAD 83 (1986 Adjustment)  
 N-108138.678  
 E-494955.471
- 2001 Westwood Professional Services, Inc. found a field stone with a drill hole. We replaced the stone with a cast iron monument and established reference ties.
- This corner is noted on the following recorded plats:
- |   |           |            |
|---|-----------|------------|
| <i>WAPICADA ADDITION</i>                    | 12/4/1958 | M.B. Lang  |
| <i>MN/DOT Plats No. 5-6, 5-7, &amp; 5-8</i> | 6/9/1993  | J. Nielsen |
| <i>MN/DOT Plat No. 5-14</i>                 | 4/5/1994  | J. Nielsen |
- 2003 Found CIM and measured 2695.24 feet to the NE corner and 2695.79 feet to the SE corner.  
 County Coordinates obtained by GPS to CIM:  
 NAD 83 (1996 Adjustment)  
 N- 108139.333  
 E- 494955.061
- 2008 Westwood Professional Services, Inc. found a CIM at corner location, established reference ties and verified the 2003 coordinates.

# CERTIFICATE OF LOCATION OF GOVERNMENT CORNER

EAST QUARTER Corner of Section 28, Township 36N, Range 30W, 4th P.M.

STATE OF MINNESOTA, County of Benton

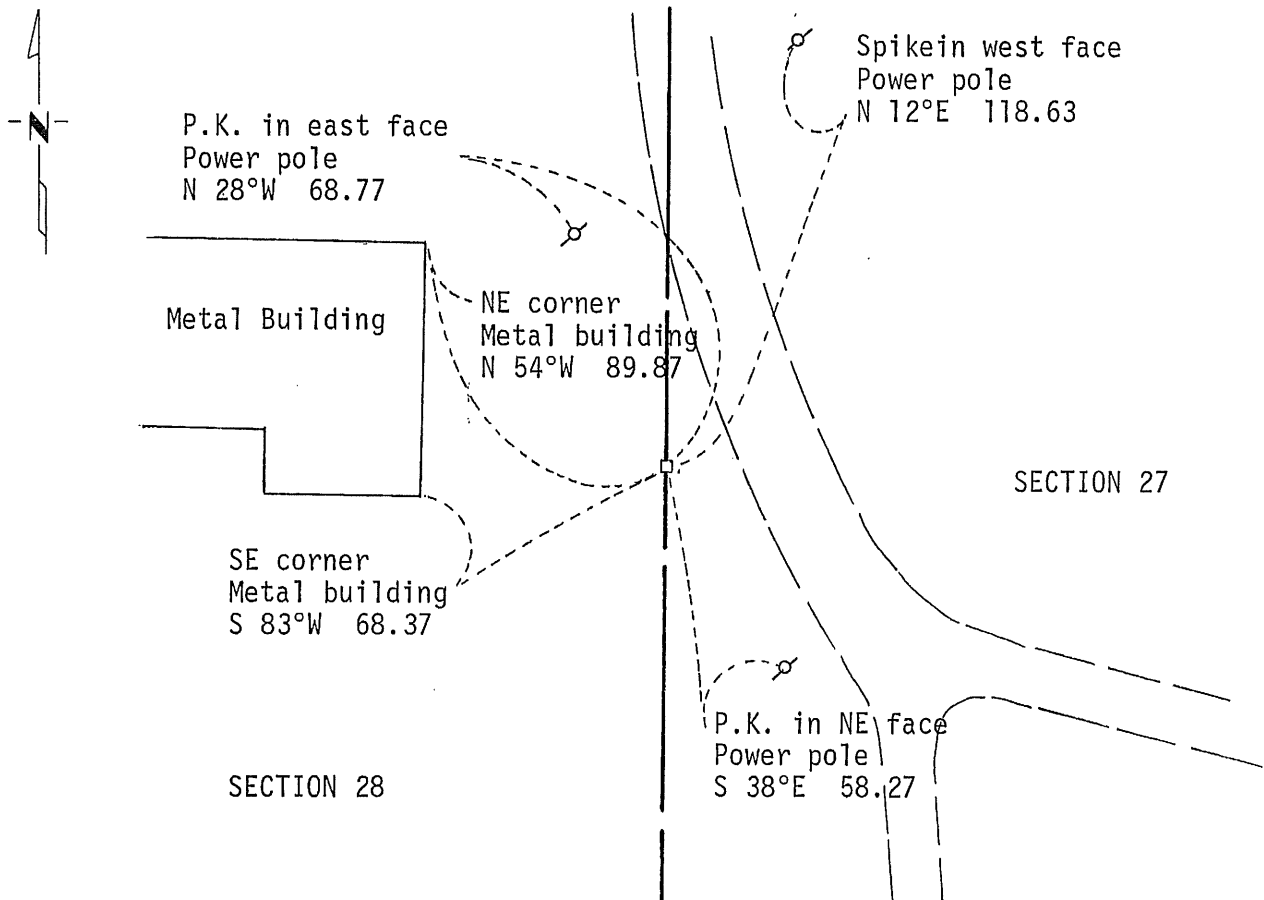
At the corner location shown on the sketch:

On 04/17/92 found a field stone with drill hole  
DATE

left monument as found,  lowered monument,  removed monument (explain)

On \_\_\_\_\_ placed a \_\_\_\_\_  
DATE

### SKETCH OF REFERENCE TIES



Statement of evidence relative to this corner location is on back of page.

I hereby certify that this document and the data contained herein was prepared by me or under my direct supervision.

James W. Nielsen 1/7/1992  
SIGNATURE DATE

Registration No. 11865

Land Surveyor,  Professional Engineer

County Surveyor,  County Engineer

### OFFICE OF THE COUNTY RECORDER

County of \_\_\_\_\_

I hereby certify that this document was filed in the Co. Recorders office at \_\_\_\_\_ .M. on the \_\_\_\_\_ day of \_\_\_\_\_ A.D., 19 \_\_\_\_\_

County Recorder \_\_\_\_\_

By \_\_\_\_\_, Deputy

DOCUMENT NO. \_\_\_\_\_

Statement of Evidence:

EAST QUARTER CORNER

SECTION 28, TOWNSHIP 36 NORTH,  
RANGE 30 WEST

Reference: Certificate of Location by William Lunser dated 03/19/81.

The 1922 Highway Department right of way map indicates a monument at the corner but doesn't reference the monument to the highway centerline.

The 1947 Highway Department right of way map calls for a field stone at the corner 532.0 feet south of TH 23 station 212+39.5 at a fence intersection.

On 04/17/92 Mn/DOT recovered the field stone with a drill hole and three of the reference ties. The stone is at the 1947 location and is accepted by Mn/DOT as the correct location for the corner.

For details and survey analysis contact the Minnesota Department of Transportation Surveys Section in Baxter, MN.

216767

OFFICE OF  
BENTON COUNTY RECORDER  
BENTON COUNTY, MN  
CERTIFIED TO BE FILED  
AND/OR RECORDED ON

AUG 3 4 08 PM '93

ALICE G. ENGELMEYER  
COUNTY RECORDER

BY  DEPUTY

# CERTIFICATE OF LOCATION OF GOVERNMENT CORNER

East Quarter Corner of Section 28, Township 36, Range 30, \_\_\_\_\_ P.M.

STATE OF MINNESOTA, County of Benton

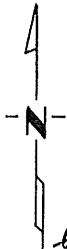
At the corner location shown on the sketch:

On 3-19-81 found a field stone with drill hole  
DATE

left monument as found,  lowered monument,  removed monument (explain)

On 3-19-81 placed a left as found  
DATE

### SKETCH OF REFERENCE TIES



*Refer to next page*

Statement of evidence relative to this corner location is on back of page.

I hereby certify that this document and the data contained herein was prepared by me or under my direct supervision.

William F. Lunsar 3-19-81  
SIGNATURE DATE

Registration No. 9394

- Land Surveyor,  Professional Engineer
- County Surveyor,  County Engineer

County Recorder  
OFFICE OF THE REGISTER OF DEEDS  
County of Benton

I hereby certify that this document was filed in the Reg. of Deeds office at 3 P. .M. on the 7th day of April A.D., 1981

County Recorder  
Register of Deeds F.A. Johnson

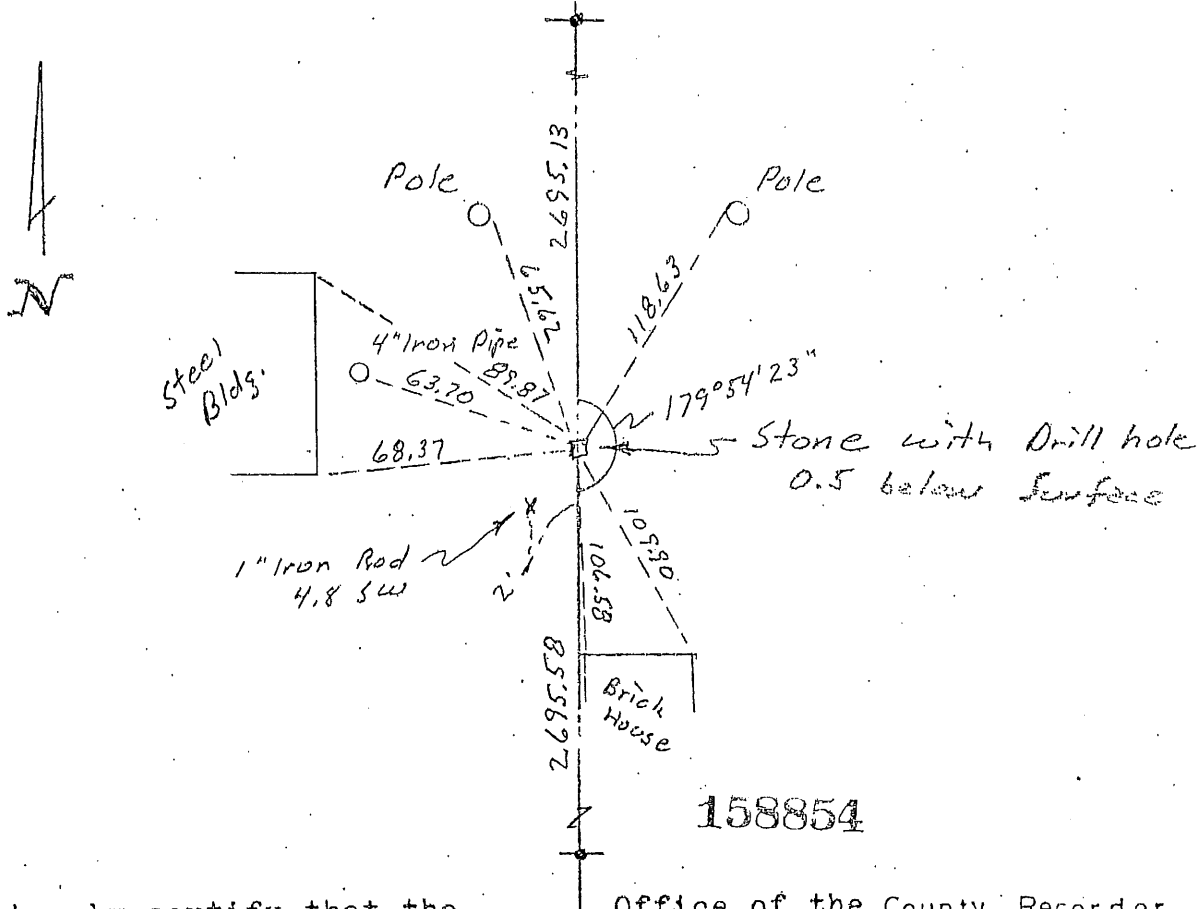
By \_\_\_\_\_, Deputy

DOCUMENT NO. 158854

# CERTIFICATE OF LOCATION OF GOVERNMENT CORNER

I hereby certify that on the 19th day of March, 1981  
I did find \_\_\_\_\_ the East Quarter corner of Section 28,  
Twp. 36, Rg. 30, Benton \_\_\_\_\_ County, Minnesota, which  
was evidenced by A field stone with drill hole

I further certify that in order to perpetuate said corner I did  
at the exact location thereof place a permanent marker consisting  
of left as found and that  
I did establish witness or reference monuments as shown below:



I hereby certify that the above is true and correct and that I am a registered Land Surveyor under the laws of the State of Minnesota.

William P. Luman

Minn. Registration No. 9394

Office of the County Recorder,  
Benton County, Minn.

I hereby certify that the within instrument was filed for record in this office on the 7th day of April, 1981. 3 P.M.

F. A. Johnson  
County Recorder

By \_\_\_\_\_ Deputy.