

A 356230

Certified, Filed and or Recorded on
Apr. 02, 2008 AT 10:59AM

Signed: OK
MARILYN J NOVAK G V I
BENTON COUNTY MINNESOTA
MARILYN J NOVAK
COUNTY RECORDER

CERTIFICATE OF LOCATION OF GOVERNMENT CORNER

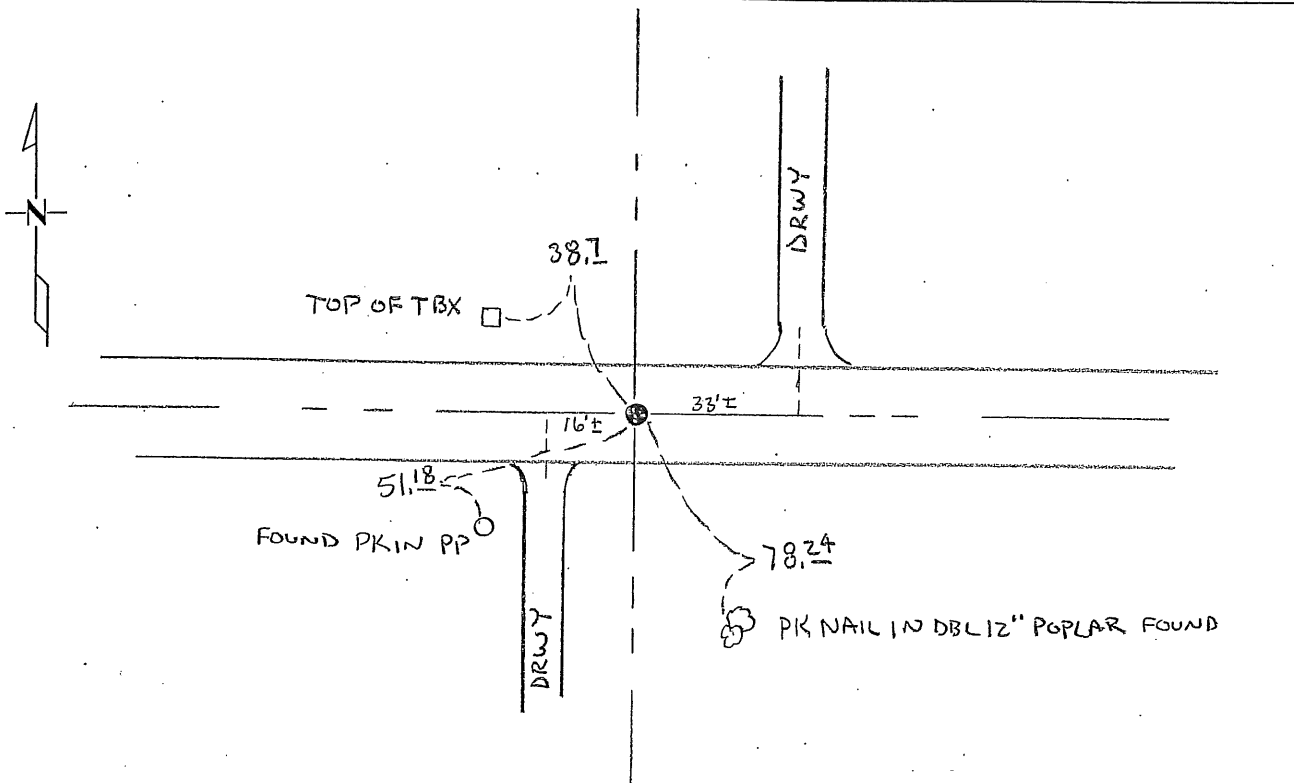
NORTH QUARTER Corner of Section 6, Township 36, Range 30
4TH Principal Meridian, State of Minnesota, County of Benton

At the corner location shown on the sketch:

On 1-23-07 found a CAST IRON MON
DATE

left monument as found lowered monument removed monument (explain)

On _____ placed an _____
DATE



Statement of evidence for this corner location is on back of this page.

I hereby certify that this document was researched and prepared by me or under my direct supervision and that I am a licensed Land Surveyor under the laws of the State of Minnesota.

Signature Glenn C. Wittstock Date 3-24-2008 License No. 19552

Title: Land Surveyor Professional Engineer County Surveyor County Engineer

A 356230

Benton County Surveyor's Office
Jerome C. Wittstock, County Surveyor
Minnesota License No. 19552

Statement of Evidence:

L061

The North Quarter Corner of Section 6, Township 36 North, Range 30 West, Minden Township, 4th Principal Meridian, Benton County, Minnesota.

- 1849 Original US General Land Office survey set a wood post in a mound with pit 6 links east.
- 1917 County Surveyor's records contain a subdivision of Section 6 by R.H. West which shows all 40 corners set. Survey notes a stake at the corner location with distances of 2659 feet to the NE corner and 2677 feet to the NW corner. (This indicates that corner was set lost.)
- 1988 Bruce Skipton, LS 17768, found no evidence of the corner and set a cast iron monument at a single proportionate distance from the NE and NW corners of Sec 6. A Certificate of Location (#191329) was filed that shows corner in east-west town road.
- 2007 Westwood Professional Services, Inc. found a CIM at centerline of east-west road and established reference ties. The CIM fits a single proportion between the northeast and northwest corners within 0.1 feet.

County Coordinates obtained by GPS
NAD 83 (1996 Adjustment)
N-132157.267
E-481186.719

CERTIFICATE OF LOCATION OF GOVERNMENT CORNER

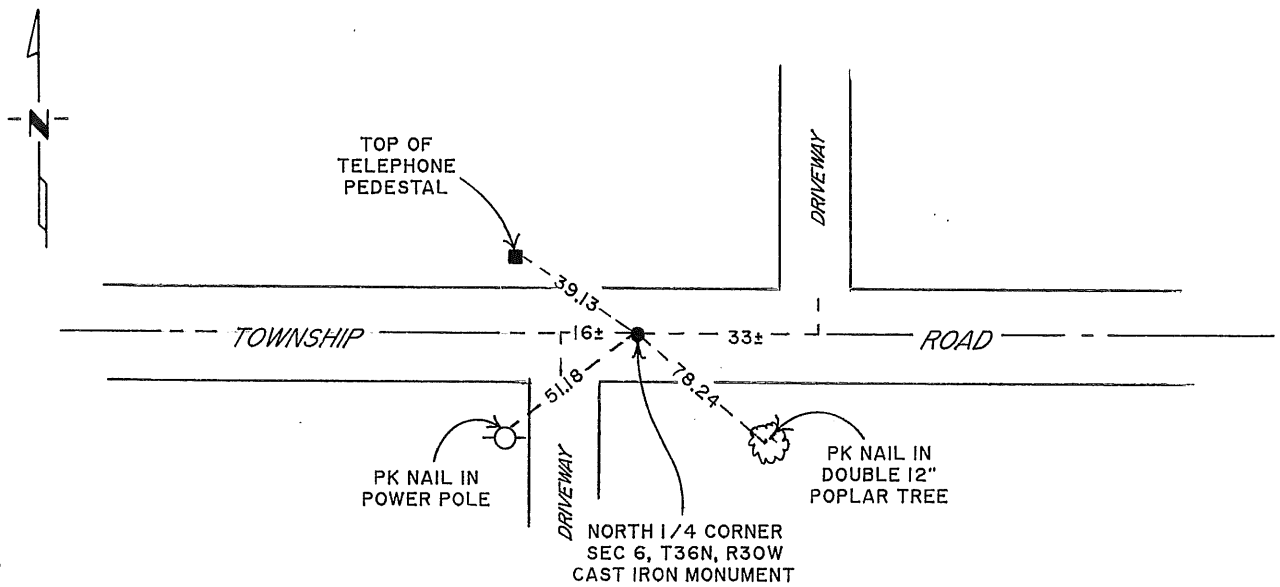
NORTH QUARTER Corner of Section 6, Township 36N, Range 30W, 4th P.M.

STATE OF MINNESOTA, County of BENTON

At the corner location shown on the sketch:

- On _____ found a _____
DATE
- left monument as found, lowered monument, removed monument (explain)
- On 23 JUNE 1988 placed a CAST IRON MONUMENT
DATE

SKETCH OF REFERENCE TIES



Statement of evidence relative to this corner location is on back of page.

I hereby certify that this document and the data contained herein was prepared by me or under my direct supervision.

Bruce W. Skjott 1-3-89
SIGNATURE DATE

Registration No. 17768

Land Surveyor, Professional Engineer

County Surveyor, County Engineer

OFFICE OF THE COUNTY RECORDER

County of _____

I hereby certify that this document was filed in the Co. Recorders office at _____ .M. on the _____ day of _____ A.D., 19 ____

County Recorder _____

By _____, Deputy

DOCUMENT NO. _____

Statement of Evidence:

NORTH QUARTER CORNER SECTION 6, T36N, R30W, 4TH P.M

1. During the G.L.O. Survey of 1852, Mr. Theodore Conkey a U.S. Deputy Surveyor, set a wood post to mark this corner.
2. Benton County's old Surveyor's book provided no information to relocate said corner.
3. On June 23, 1988, Paul E. Wellen & Associates Inc., dug with a jackhammer at the single proportionate distance from the northeast corner to the northwest corner of said section and found nothing. We set a cast iron monument, by the lost method procedure, on a single proportionate distance from the northeast corner to the northwest corner of said section and established reference ties as indicated.

191329

OFFICE OF
BENTON COUNTY RECORDER
BENTON COUNTY, MO
CERTIFIED TO BE FILED
AND FOR RECORDED ON

JAN 20 8 58 AM '89

ALICE G. ENGBER
COUNTY RECORDER

BY Al DEPUTY