

A 356656

Certified, Filed and or Recorded on  
Apr. 18, 2008 AT 12:18PM

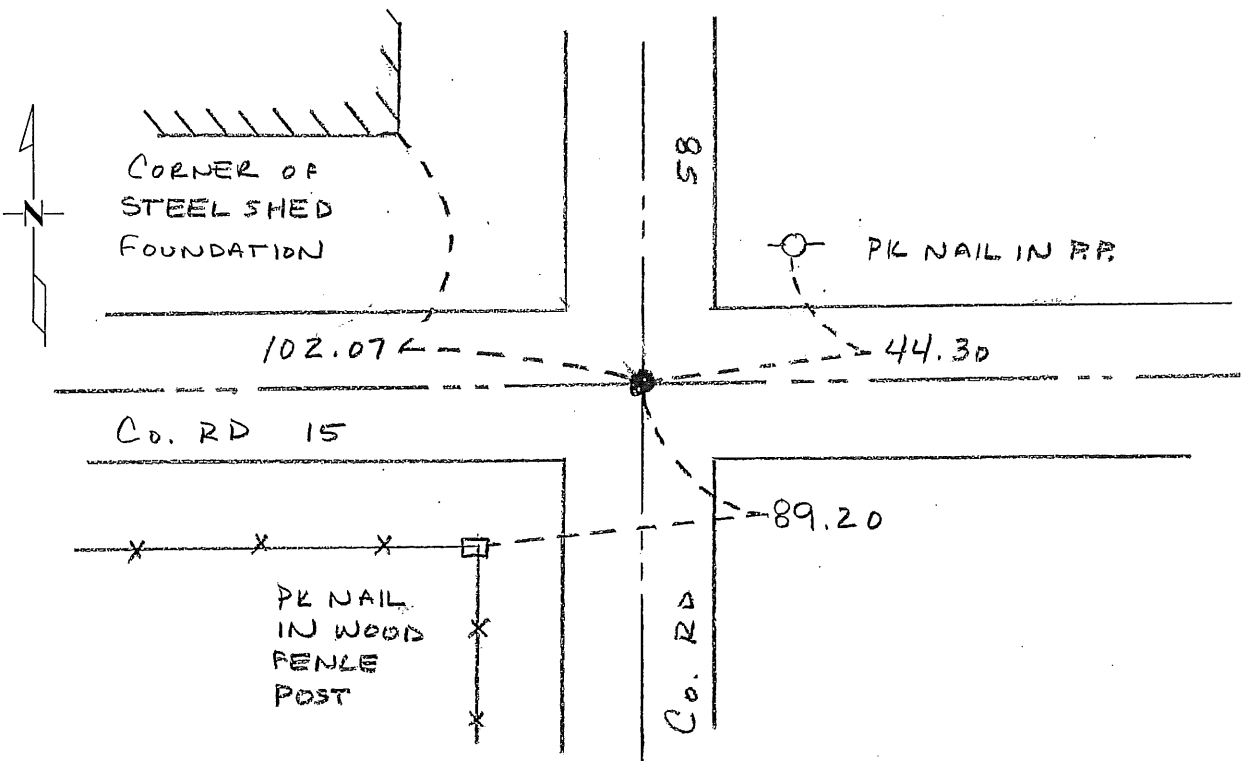
Signed: CK  
MARILYN J NOVAK  
BENTON COUNTY MINNESOTA  
MARILYN J NOVAK  
COUNTY RECORDER

### CERTIFICATE OF LOCATION OF GOVERNMENT CORNER

NORTH QUARTER Corner of Section 8, Township 36, Range 30  
4TH Principal Meridian, State of Minnesota, County of Benton

At the corner location shown on the sketch:

- On \_\_\_\_\_ found a \_\_\_\_\_  
DATE
- left monument as found     lowered monument     removed monument (explain)
- On 6/13/07 placed an 1/2" IRON PIPE CAPPED 19552 OVER  
DATE  
A FOUND RED GRANITE STONE.



Statement of evidence for this corner location is on back of this page.

I hereby certify that this document was researched and prepared by me or under my direct supervision and that I am a licensed Land Surveyor under the laws of the State of Minnesota.

Signature Jerome C. Wittstock Date 16 April 2008 License No. 19552

Title:  Land Surveyor     Professional Engineer.     County Surveyor     County Engineer

Benton County Surveyor's Office  
 Jerome C. Wittstock, County Surveyor  
 Minnesota License No. 19552

**Statement of Evidence:****L081**

The North Quarter Corner of Section 8, Township 36 North, Range 30 West, Minden Township, 4<sup>th</sup> Principal Meridian, Benton County, Minnesota.

- 1852 Original US General Land Office survey set a wood post at the corner location and bearing trees were recorded.  
 6" Blk Oak N 5 3/4 E 1576 links
- 1933 County Engineer's Notebook No. 71 contains survey of County road running west to east. Notes show corner marked by a hub and rock in center of road. Ties:  
 F.P. NE 52.0'  
 T.P. NW 55.9'  
 Stationing gives distances of 2675.2 feet to the NE corner and 2638.3 feet to the NW corner with a delta angle of 0-40' right.
- 1933 County Engineer's Notebook No. 71 contains survey of Township road running south to north. Notes show corner marked by a hub and rock in center of road intersection.
- 1957 County Surveyor's Record Book 1, page 175, notes the following reference ties to a hub and rock at the corner:  
 TP SE 115.4  
 TP SW 48.7
- 1962 Carley Engineering survey notes give distance of 5319.64 feet between section corners with corner set midway and on line.
- 1992 Paul Wellen, LS 10461, found a RR spike at the intersection of the centerlines north/south and east/west. He replaced it with a cast iron monument and filed a Certificate of Location (#216300).
- 2002 Found CIM with approximate distance to the NW corner being 2642 feet.  
 County Coordinates obtained by traverse to CIM.  
 NAD 83 (1996 Adjustment)  
 N- 126691.726  
 E- 486745.679
- 2004 Information from BWK gives distance of 2676.84 feet to the NE corner.
- 2007 Westwood Professional Services, Inc. excavated the corner location. A 1/2" iron pipe capped 19552 was placed over a found red granite stone. The monument location fits centerline of north-south and east-west roads. New reference ties were created.  
 County Coordinates obtained by GPS  
 NAD 83 (1996 Adjustment)  
 N- 126693.678  
 E- 486746.368

# CERTIFICATE OF LOCATION OF GOVERNMENT CORNER

North Quarter \_\_\_\_\_ Corner of Section 8, Township 36, Range 30, 4th P.M.  
STATE OF MINNESOTA, County of Benton

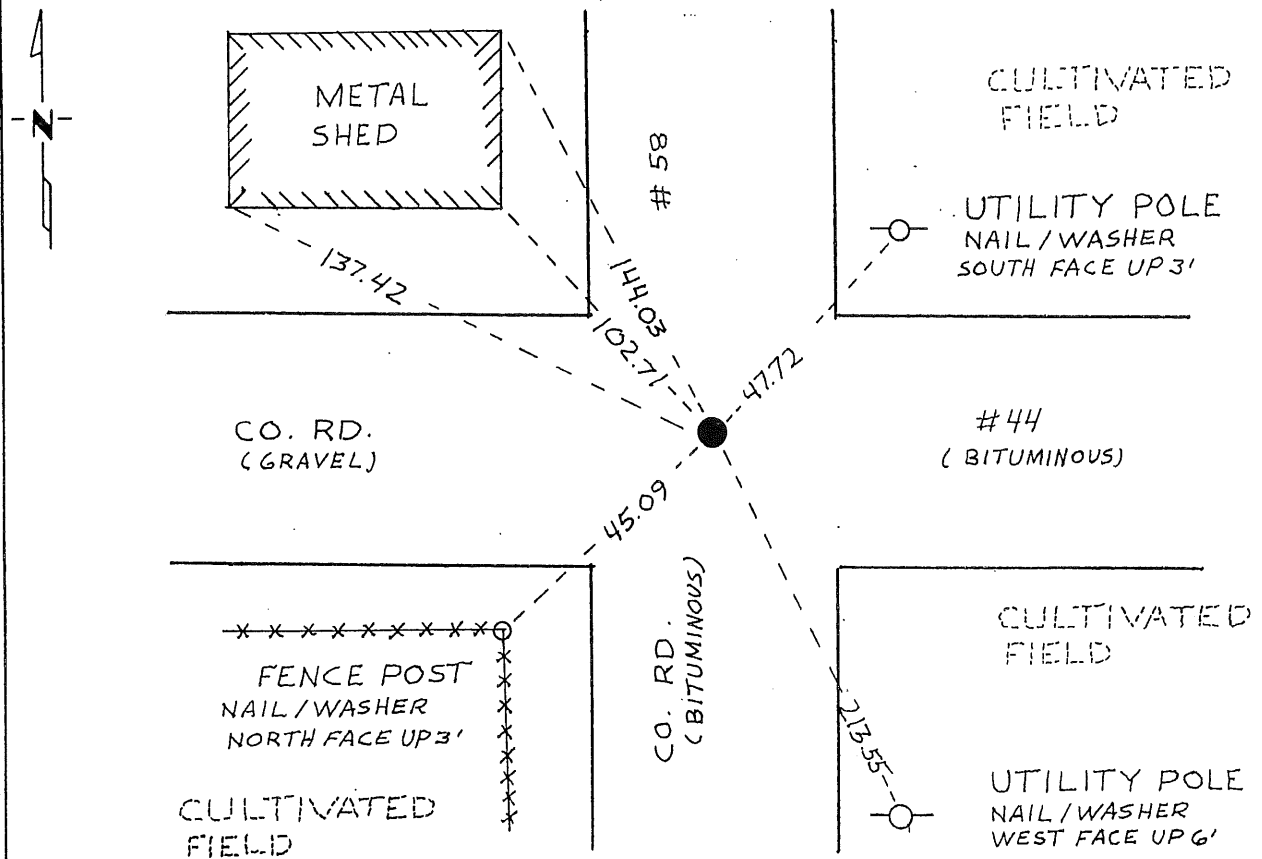
At the corner location shown on the sketch:

On 7-20-92 found a Railroad Spike  
DATE

left monument as found,  lowered monument,  removed monument (explain)

On 7-20-92 placed a Cast Iron Monument (Flush)  
DATE

### SKETCH OF REFERENCE TIES



Statement of evidence relative to this corner location is on back of page.

I hereby certify that this document and the data contained herein was prepared by me or under my direct supervision.

*Dan J. Miller* 2-16-93  
SIGNATURE DATE

Registration No. 10461

- Land Surveyor,  Professional Engineer
- County Surveyor,  County Engineer

OFFICE OF THE COUNTY RECORDER  
County of \_\_\_\_\_

I hereby certify that this document was filed in the Co. Recorders office at \_\_\_\_\_ M. on the \_\_\_\_\_ day of \_\_\_\_\_ A.D., 19 \_\_\_\_\_

County Recorder \_\_\_\_\_

By \_\_\_\_\_, Deputy

DOCUMENT NO. \_\_\_\_\_

Statement of Evidence:

NORTH QUARTER CORNER, SECTION 8, T 36, R 30W, 4TH P.M.

1. During the G.L.O. survey of 1852, Mr. Edwin James Jr., a U.S. Deputy Surveyor, set a wood post to mark said corner.
2. Benton County's old surveyor's books provided that in 1957 HUB and rock in place at said corner.
3. On July 20, 1992, Paul E. Wellen & Associates searched for said corner at intersection of County Road #44 and County Road #58 and found railroad spike and a HUB at center line-center line. We accepted the railroad spike as evidence of location of said corner. On July 20, 1992, we set a Cast Iron Monument in place of railroad spike and established new reference ties as indicated.

216300

OFFICE OF  
BENTON-COUNTY RECORDER  
BENTON COUNTY, MN  
CERTIFIED TO BE FILED  
AND/OR RECORDED ON

JUL 14 1 24 PM '93

ALICE G. ESCOFFIER  
COUNTY RECORDER

BY *Jan* DEPUTY