

A 356658

Certified, Filed and or Recorded on
Apr. 18, 2008 AT 12:21PM

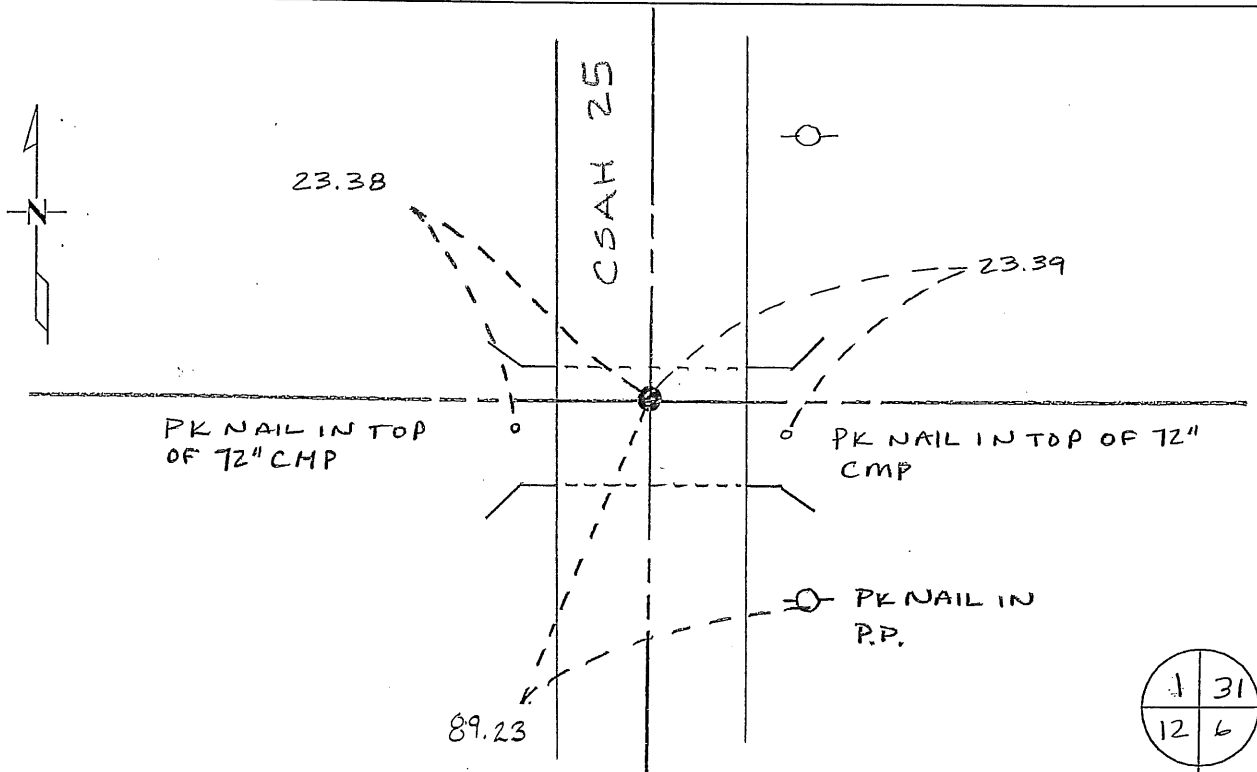
Signed: CK
MARILYN J NOVAK EV
BENTON COUNTY MINNESOTA
MARILYN J NOVAK
COUNTY RECORDER

CERTIFICATE OF LOCATION OF GOVERNMENT CORNER

NORTHEAST Corner of Section 12, Township 36, Range 30
4TH Principal Meridian, State of Minnesota, County of Benton

At the corner location shown on the sketch:

- On _____ found a _____
- left monument as found lowered monument removed monument (explain)
- On 25 MAR 08 placed an PK NAIL & WASHER OVER EXISTING
DATE MONUMENT



Statement of evidence for this corner location is on back of this page.

I hereby certify that this document was researched and prepared by me or under my direct supervision and that I am a licensed Land Surveyor under the laws of the State of Minnesota.

Signature Jerome C. Wittstock Date 16 April 2008 License No. _____
Title: Land Surveyor Professional Engineer County Surveyor County Engineer

Statement of Evidence:

L122

Northeast Corner of Section 12, Township 36 North, Range 30 West, Minden Township,
4th Principal Meridian, Benton County, Minnesota.

1849 Original US General Land Office survey established this corner and note a wood post was set with bearing trees marked:

4" Willow	N 73 W	39 links
6" Willow	S 68 1/2 W	59 links

A line tree was noted as an 18" Blk Oak North 16.76 chains.

1930 County Engineer's Notebook No. 60 for CR 25 running north-south indicates a spike set for the corner.

1959 County Engineer's Notebook No. 208 contains a survey for CSAH No. 25 running south to north on the section lines. Corner is shown as a spike set in center of road at fence line west. Ties.

Guard W 11.5

Guard E 11.5

At north edge of bridge

1995 Kevin Festler, LS, found a PK nail with washer at the intersection of the centerline of a road north/south and a fence line west. He removed the PK nail and found no other evidence below. He set a 1/2" pipe capped RLS #16097. He filed a Certificate of Location (#230318).

Comstock and Davis performed GPS work under contract with Benton County and Coordinates Obtained by GPS NAD 83 (1986 Adjustment) to an iron pipe:

N- 126781.038

E- 510617.791

2004 MN/DOT survey crew found iron pipe.
County Coordinates furnished by MN/DOT to IP
NAD 83 (1996 Adjustment)

N- 126781.188

E- 510617.211

2008 Westwood Professional Services, Inc. placed a Pk nail and county washer flush with bituminous surface over found/existing monument

NAD 83 (1996 Adjustment)

N- 126781.188

E- 510617.211

CERTIFICATE OF LOCATION OF GOVERNMENT CORNER

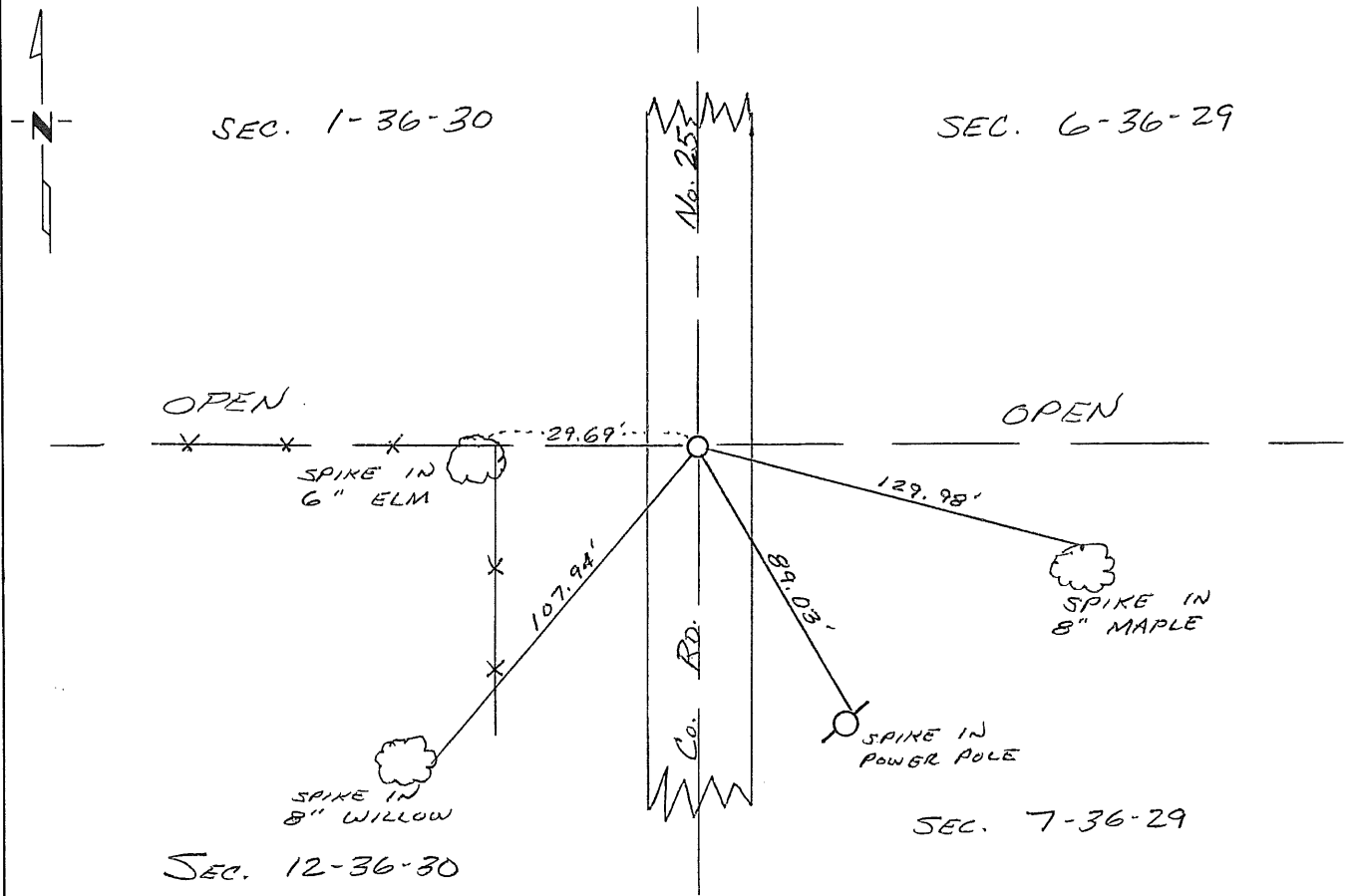
Northeast Corner of Section 12, Township 36, Range 30, 4th P.M.

STATE OF MINNESOTA, County of Benton

At the corner location shown on the sketch:

- On 2-2-95 found a P.K. nail at centerline north-south= fence
DATE line west
- left monument as found, lowered monument, removed monument (explain)
- On 2-9-95 placed a 1/2" iron pipe monument capped RLS No. 16097
DATE

SKETCH OF REFERENCE TIES



NOT TO SCALE

Statement of evidence relative to this corner location is on back of page.

I hereby certify that this document and the data contained herein was prepared by me or under my direct supervision.

[Signature] SIGNATURE 8/17/1995 DATE

Registration No. 22702

Land Surveyor, Professional Engineer

County Surveyor, County Engineer

OFFICE OF THE COUNTY RECORDER

County of _____

I hereby certify that this document was filed in the Co. Recorders office at _____ M. on the _____ day of _____ A.D., 19 _____

County Recorder _____

By _____, Deputy

DOCUMENT NO. _____

Statement of Evidence:

The northeast corner of Section 12, Township 36, Range 30, 4th Principal Meridian, Benton County, Minnesota, was set under the Public Land Survey as a post with bearing trees. No trace of post or trees now exists.

A search by Benton Co. Highway personnel of available county survey records revealed no additional information on this corner.

In 1995, Comstock & Davis, Inc., while remonumenting section corners for the purpose of G.P.S. work for Benton County found a P.K. Nail at the northeast corner position of Section 12, Twp. 36, Rng. 30. The P.K. Nail was further evidenced by a centerline north-south and a fence line west. Comstock & Davis, Inc., compared the location of the P. K. Nail to the original U.S. Government survey and found the position to be within reason of the Public Land Survey records. Comstock & Davis, Inc. accepted the position of the P.K. Nail as the position of the northeast corner of Section 12 and replaced it with a 1/2" inch iron pipe monument capped RLS No. 16097. Refer to Job No. 945017.

230318

OFFICE OF
BENTON COUNTY RECORDER
BENTON COUNTY, MN
CERTIFIED TO BE FILED
AND/OR RECORDED ON

AUG 31 12 52 PM '95

ALICE J. HEDGECOCK
COUNTY RECORDER

BY Mm COUNTY CLERK