

Certified, Filed and or Recorded on
Apr. 24, 2008 AT 01:37PM

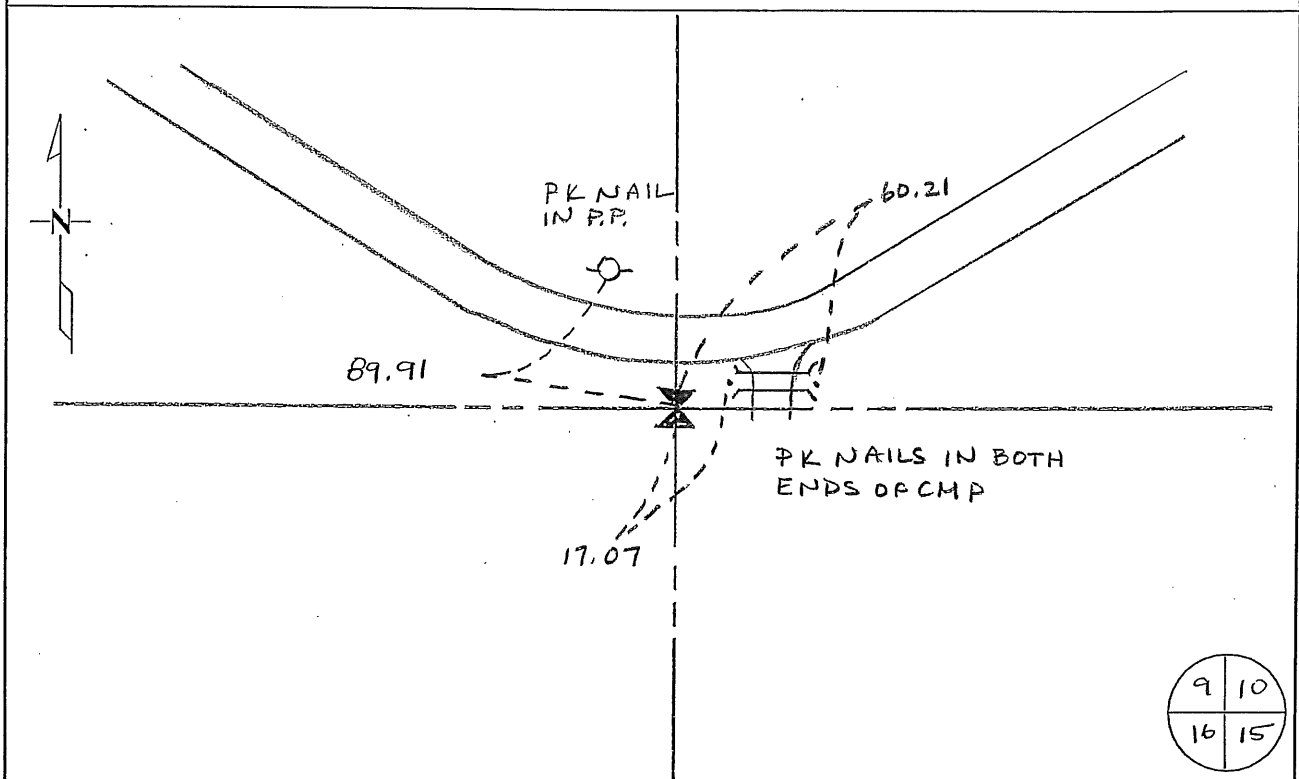
Signed: CK
MARILYN J NOVAK 6 V 1
BENTON COUNTY MINNESOTA
MARILYN J NOVAK
COUNTY RECORDER

CERTIFICATE OF LOCATION OF GOVERNMENT CORNER

NORTH EAST Corner of Section 16, Township 36, Range 30
4TH Principal Meridian, State of Minnesota, County of Benton

At the corner location shown on the sketch:

- On 25 MAR 08 found a cast iron monument
DATE
- left monument as found lowered monument removed monument (explain)
- On _____ placed on _____
DATE



Statement of evidence for this corner location is on back of this page.

I hereby certify that this document was researched and prepared by me or under my direct supervision and that I am a licensed Land Surveyor under the laws of the State of Minnesota.

Signature: Jerome C. Wittstock Date 24 April 2008 License No. 19552

Title: Land Surveyor Professional Engineer County Surveyor County Engineer

Benton County Surveyor's Office
 Jerome C. Wittstock, County Surveyor
 Minnesota License No. 19552

Statement of Evidence:**L162**

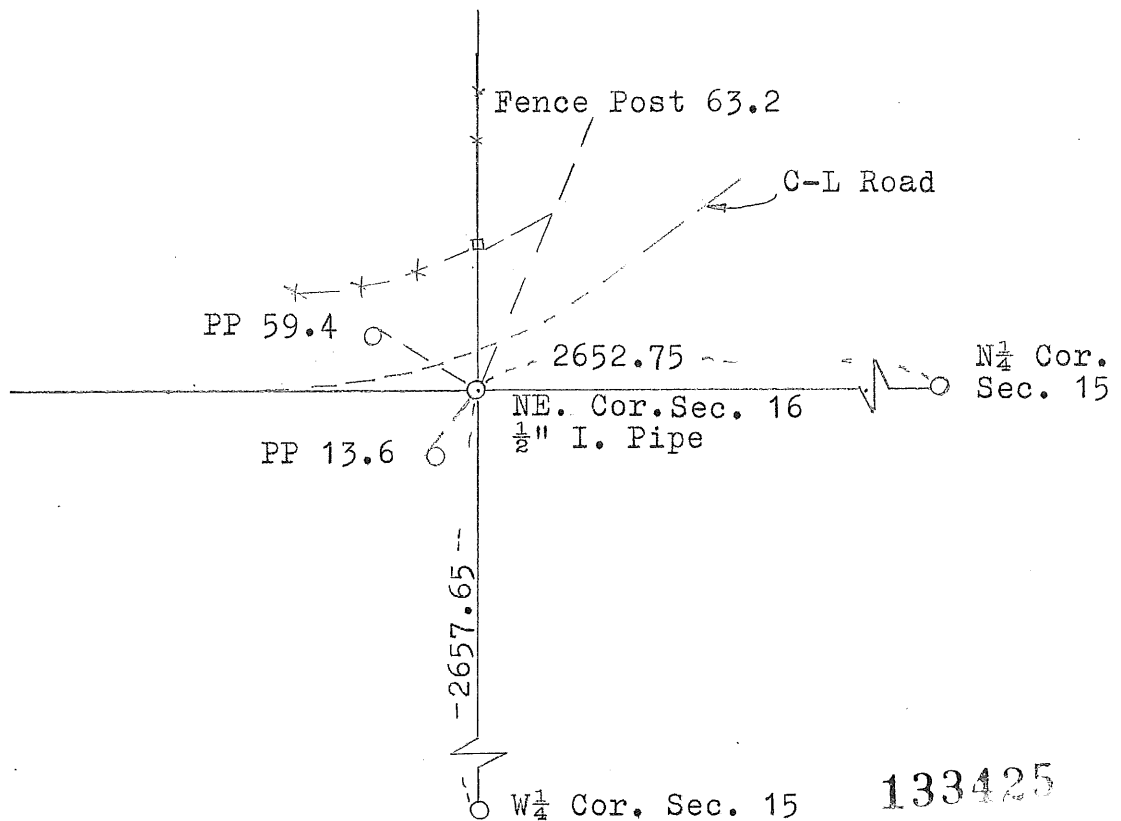
The Northeast Corner of Section 16, Township 36 North, Range 30 West, Minden Township, 4th Principal Meridian, Benton County, Minnesota.

- 1852 Original General Land Office survey established this corner and a wood post was set for the corner and bearing tree was recorded:
 8" Burr Oak S 80 W 525 links
- 1913 County Surveyor Record Book, pages 42 and 43, contains a survey in Section 16 by J. A. Stanton. Survey shows corner indicated by fences radiating therefrom, which have been maintained for many years and recognized by adjoining owners. Gives distance of 5222 to the NW corner Section 16.
- 1935 County Engineer's Notebook No. 87 contains a survey for SAR No 3 and No. 4 running from Foley to Sauk Rapids. Survey notes corner as fence corner with fences running west and north being 48.0 feet west of the PI.
- 1969 RCM ties to a 1/2" I.P.
 P.P. NW 59.43 G.P. SW 13.66
 T.P. SW 8.35
- 1971 William Lunser, LS 9394, found a 1/2" iron pipe. He left it in place and a Certificate of Location (#133425) was recorded with ties:
 P.P. SW 13.6 P.P. NW 59.4
 Cor F.P. W 63.2
 Information gives distances of 2652.75 feet to the North ¼ corner Sec. 15 and 2657.65 feet to the East ¼ corner Sec. 16.
- 1994 Central Minnesota Land Surveying found 3/4" iron pipe at the extension of fence line and centerline of County Road 3. Left as was. Lunser's ties destroyed. Established new tie.
 B.C.H.D in P.P. NE 89.98
- 1995 Comstock and Davis performed GPS work under contract with Benton County and Coordinates Obtained by GPS NAD 83 (1986 Adjustment) to a ¾ " iron pipe:
 N- 121540.744
 E- 494781.832
- 2001 Westwood Professional Services, Inc. found a 1/2" iron monument in road ditch at the extension of centerline of County Road 3 west and tree line from the north. The pipe fit with being 48 feet west of the approximate PI. Removed and set cast iron monument and established new reference ties.
- 2003 From CIM measured 2653.40 feet to the North ¼ corner Sec. 15
 County Coordinates obtained by GPS to CIM:
 NAD 83 (1996 Adjustment)
 N- 121540.871
 E- 494781.305
 Corner is accepted as marking the obliterated corner position.
- 2008 Westwood Professional Services, Inc. found the CIM and established new reference ties.

CERTIFICATE OF LOCATION OF GOVERNMENT CORNER

I hereby certify that on the 1 day of March, 1971
I did find the northeast corner of Section 16,
Twp. 36, Rg. 30, Benton County, Minnesota, which
was evidenced by a 1/2" iron pipe found in place

I further certify that in order to perpetuate said corner I did
at the exact location thereof place a permanent marker consisting
of left it as it was and that
I did establish witness or reference monuments **as shown below:**



I hereby certify that the above is true and correct and that I am a registered Land Surveyor under the laws of the State of Minnesota.

William J. James

Minn. Registration No. 9394

Office of the Register of Deeds,
Benton County, Minn.

I hereby certify that the within instrument was filed for record in this office on the 9th day of February, 1973.

J.A. Johnson
Register of Deeds

By Marilyn Novak Deputy.