

Certified, Filed and or Recorded on
Feb. 12, 2010 AT 12:52PM

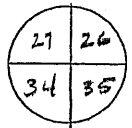
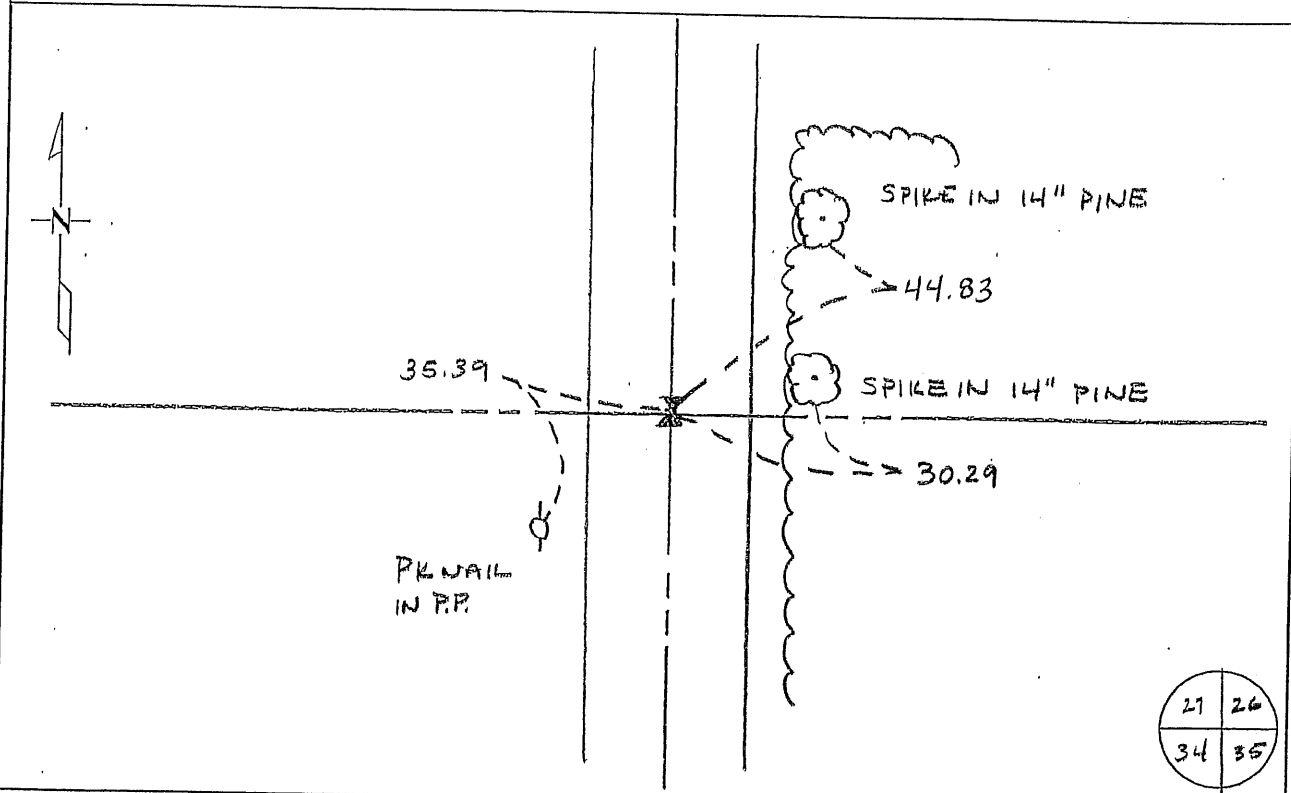
Signed: M
MARILYN J NOVAK G V I
BENTON COUNTY MINNESOTA
MARILYN J NOVAK
COUNTY RECORDER

CERTIFICATE OF LOCATION OF GOVERNMENT CORNER

NORTH EAST Corner of Section 34, Township 36, Range 30
4TH Principal Meridian, State of Minnesota, County of Benton

At the corner location shown on the sketch:

- On 01 APRIL 08 found a CIM
DATE
- left monument as found lowered monument removed monument (explain)
- On 01 APRIL 08 placed an PK NAIL & COUNTY WASHER OVER
DATE
FOUND CIM



Statement of evidence for this corner location is on back of this page.

I hereby certify that this document was researched and prepared by me or under my direct supervision and that I am a licensed Land Surveyor under the laws of the State of Minnesota.

Signature Jerome C. Wittstock Date 02/05/2010 License No. 19552

Title: Land Surveyor Professional Engineer County Surveyor County Engineer

Benton County Surveyor's Office
 Jerome C. Wittstock, County Surveyor
 Minnesota License No. 19552

Statement of Evidence:

L342

Northeast Corner of Section 34, Township 36 North, Range 30 West, Minden Township,
 4th Principal Meridian, Benton County, Minnesota.

1852 Original US General Land Office survey established this corner and set a wood
 post at this location and bearing trees were recorded.

8" Bur Oak S 16 1/4 W 563 links

8" Bur Oak N 44 W 371 links

1977 Paul Wellen, LS 10461, found a 1/2" pipe at the corner location and filed a
 Certificate of Location (#147249).

1992 County Coordinates from MN/DOT to 3/4" iron pin:

NAD 83 (1986 Adjustment)

N-105370.768

E-500329.926

1995 County ties show found a 3/4" pin at the corner.

Comstock and Davis performed GPS work under contract with Benton County
 and Coordinates Obtained by GPS NAD 83 (1986 Adjustment) to a 1/2 " iron pin:

N- 105371.033

E- 500329.888

2003 Westwood Professional Services, Inc. found corner marked by a cast iron
 monument. Do not know who set the CIM, but it agrees with Wellen's position
 and the coordinates determined by Comstock and Davis.

County Coordinates by GPS to a found CIM.

NAD 83 (1996 Adjustment)

N- 105371.091

E- 500329.340

2008 Westwood Professional Services, Inc. verified the 2003 coordinates, established
 reference ties and placed a PK nail and county washer flush with bituminous
 surface over existing CIM.

Should Be N.E. corner Section 34

736 R30

Index No. _____

CERTIFICATE OF LOCATION OF GOVERNMENT CORNER

Southwest _____ Corner of Section 26, Township 36N., Range 30W, 4th P.M.

STATE OF MINNESOTA, County of Benton

At the corner location shown on the sketch:

On 9-12-77 found a 1/2 " iron Pipe
DATE

left monument as found, lowered monument, removed monument (explain)

On _____ placed a _____
DATE

SKETCH OF REFERENCE TIES



Refer to next page

Statement of evidence relative to this corner location is on back of page. 147249

I hereby certify that this document and the data contained herein was prepared by me or under my direct supervision.

Paul E. Wellen 1/9/78
SIGNATURE DATE

Registration No. 10461

Land Surveyor, Professional Engineer

County Surveyor, County Engineer

OFFICE OF THE REGISTER OF DEEDS
County of Benton

I hereby certify that this document was filed in the Reg. of Deeds office at 4 P: .M. on the 10th day of January A.D., 19 78

Register of Deeds F.A. Johnson

By A. E., Deputy

DOCUMENT NO. _____

CERTIFICATE OF LOCATION OF GOVERNMENT CORNER

SOUTHWEST Corner of Section 26, Township 36N, Range 30W, 4TH P.M.

STATE OF MINNESOTA, County of BENTON

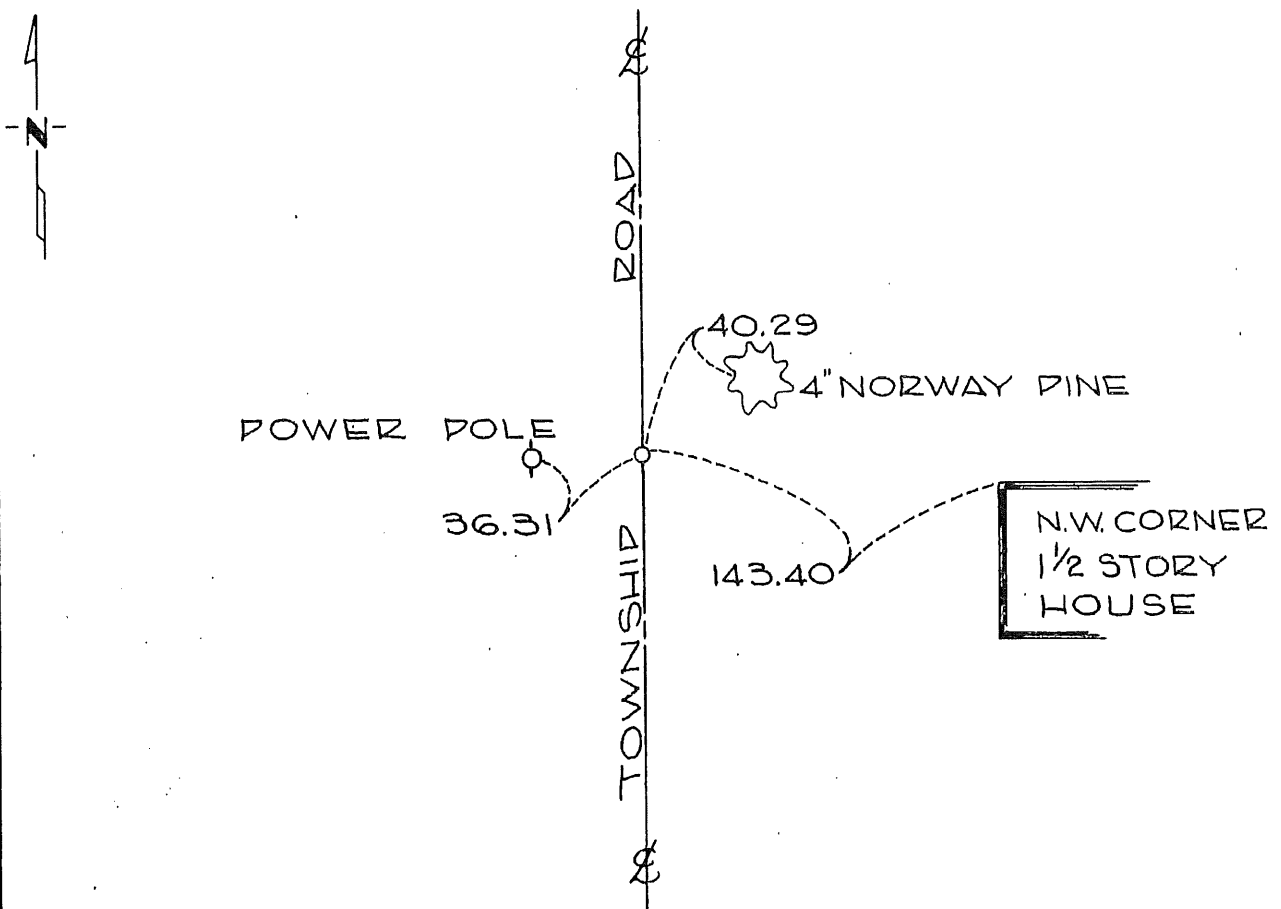
At the corner location shown on the sketch:

On 9-12-77 found a 1/2" IRON PIPE
DATE

left monument as found, lowered monument, removed monument (explain)

On _____ placed a _____
DATE

SKETCH OF REFERENCE TIES



Statement of evidence relative to this corner location is on back of page. 147249

I hereby certify that this document and the data contained herein was prepared by me or under my direct supervision.

Gary Miller 1/19/78
SIGNATURE DATE

Registration No. 10461

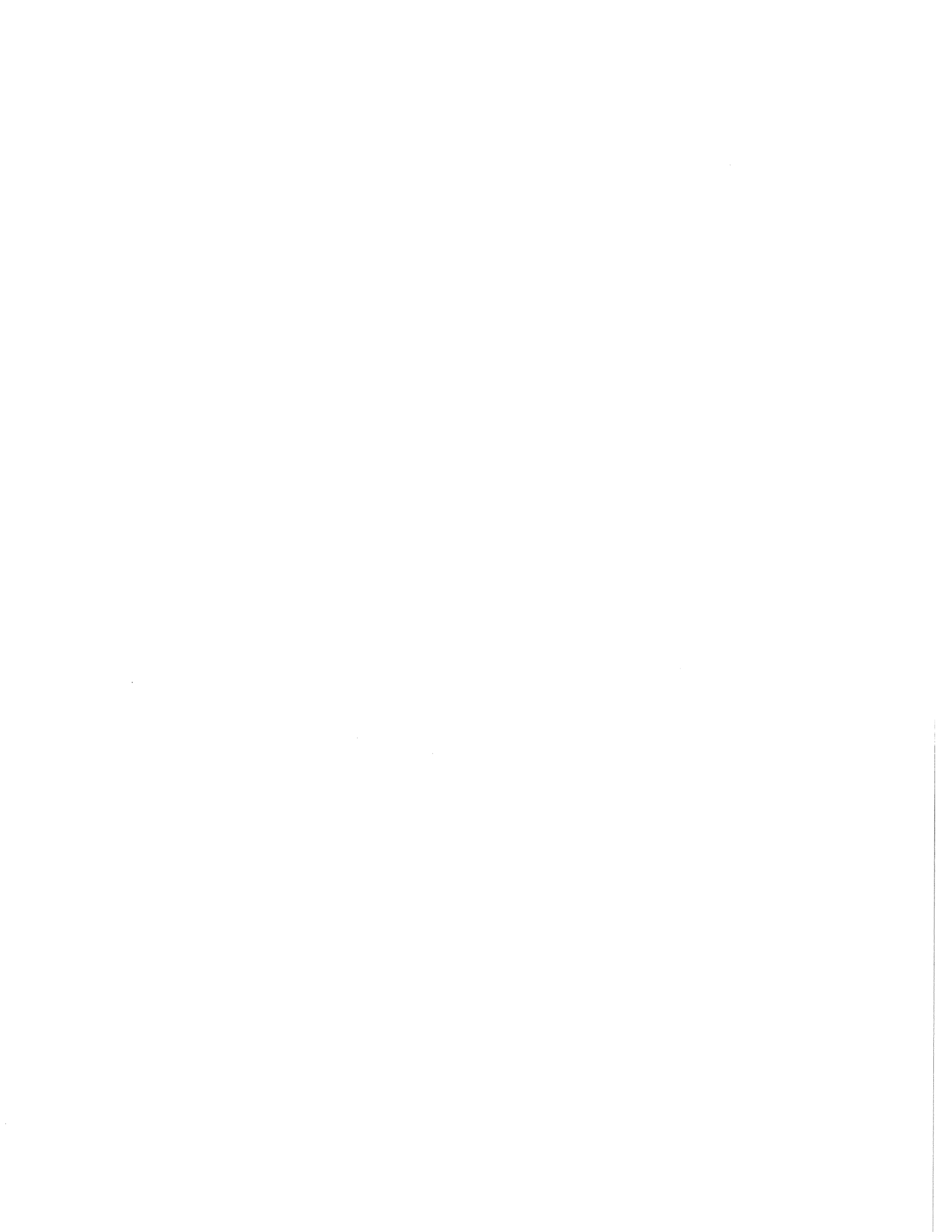
- Land Surveyor, Professional Engineer
- County Surveyor, County Engineer

OFFICE OF THE REGISTER OF DEEDS
County of Benton

I hereby certify that this document was filed in the Reg. of Deeds office at 4 P. M. on the 16 day of January A.D., 19 78

Register of Deeds J.A. Johnson
By A.E.O., Deputy

DOCUMENT NO. _____



Found a $\frac{1}{2}$ inch iron pipe at the intersection of a north-south township road and a fence line east.

CERTIFICATE OF LOCATION OF GOVERNMENT CORNER

N. E. _____ Corner of Section 34, Township 36, Range 30, _____ P.M.

STATE OF MINNESOTA, County of Benton

At the corner location shown on the sketch:

On _____ found a _____
DATE

left monument as found, lowered monument, removed monument (explain)

On _____ placed a _____
DATE

SKETCH OF REFERENCE TIES



Filed under S. W. Corner Section 26, T36 R30

Certificate #147249

Statement of evidence relative to this corner location is on back of page.

I hereby certify that this document and the data contained herein was prepared by me or under my direct supervision.

SIGNATURE DATE

Registration No. _____

- Land Surveyor, Professional Engineer
- County Surveyor, County Engineer

OFFICE OF THE REGISTER OF DEEDS

County of _____

I hereby certify that this document was filed in the Reg. of Deeds office at _____ .M. on the _____ day of _____ A.D., 19 ____

Register of Deeds _____

By _____, Deputy

DOCUMENT NO. _____

