

A 361604

Certified, Filed and or Recorded on
Nov. 06, 2008 AT 08:50AM

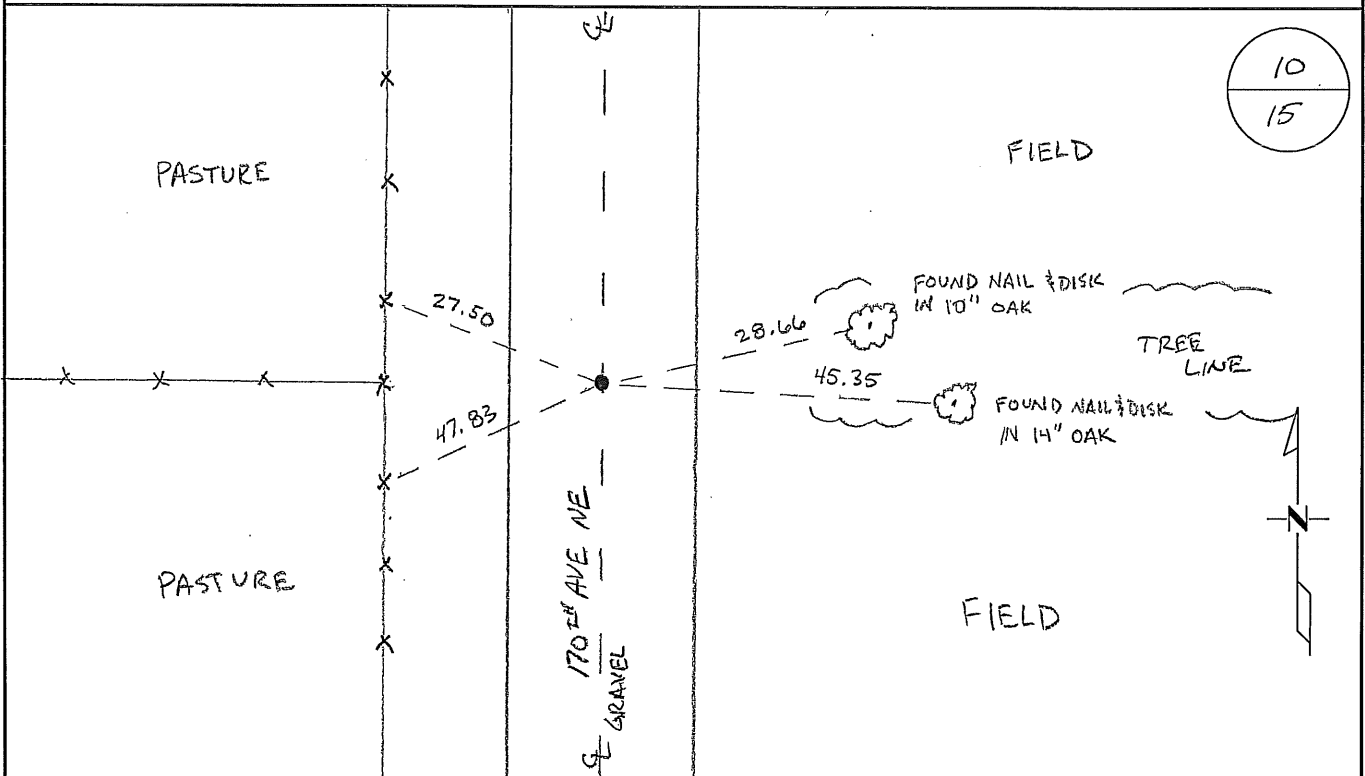
Signed: OK
MARILYN J NOVAK G V J
BENTON COUNTY MINNESOTA
MARILYN J NOVAK
COUNTY RECORDER

CERTIFICATE OF LOCATION OF GOVERNMENT CORNER

NORTH QUARTER Corner of Section 15, Township 37N, Range 28W
4TH Principal Meridian, State of Minnesota, County of Benton

At the corner location shown on the sketch:

- On 10/20/08 found a CAST IRON MONUMENT DOWN 0.8'
- left monument as found lowered monument removed monument (explain)
- On _____ placed an _____



Statement of evidence for this corner location is on back of this page.

I hereby certify that this document was researched and prepared by me or under my direct supervision and that I am a licensed Land Surveyor under the laws of the State of Minnesota.

Signature Jan W. Oley
Deputy Benton County Surveyor
License No. 45872

Date: 11/03/2008

Benton County Surveyor's Office
 Jason W. Oberg, Deputy County Surveyor
 Minnesota License No. 45872

Statement of Evidence:

I151

North Quarter Corner of Section 15, Township 37 North, Range 28 West, Maywood Township, 4th Principal Meridian, Benton County, Minnesota.

- 1855 US General Land Office survey established this corner and set a wood post and bearing trees were recorded as follows:
- | | | |
|-----------|------------|----------|
| 10" Elm | N 44 1/2 W | 5 links |
| 5" B. Ash | S 17 1/2 W | 19 links |
- 1951 Roll B-12, of the MN/DOT Highway plans for S.P.0504 (TH23=23), shows an oak hub at the intersection of roads north/south and a fence line east/west. The map shows a distance of 1821.0 feet south to the new centerline of the TH 23.
- 1994 David Regan, LS 12236, placed an iron monument in centerline of north south gravel road and on tree line east (taken from Trunk Highway 23 information). He filed a Certificate of Location (#231240).
- 2001 Westwood Professional Services, Inc. found a 1/2" open at the intersection of the centerlines of 170th Avenue NE (running north and south) and a tree line (from the south). Removed and set cast iron monument and established reference ties.
- 2003 Westwood Professional Services, Inc. found the CIM to be 1812.14 feet north of the centerline of TH 23.
 County Coordinates by GPS to CIM
 NAD 83 (1996 Adjustment)
 N- 153600.465
 E- 560540.945
- 2008 The County Surveyor's Office searched and found a cast iron monument approximately 0.8' below the surface of a north-south gravel road (170th Avenue N.E.) and on line with a west fence line and an east tree line. Surveyor accepts cast iron monument as marking the best evidence and updated ties. Coordinates to same obtained by GPS agree with those reported in 2003 above.

CERTIFICATE OF LOCATION OF GOVERNMENT CORNER

North Quarter _____ Corner of Section 15, Township 37, Range 28, 4th P.M.

STATE OF MINNESOTA, County of Benton

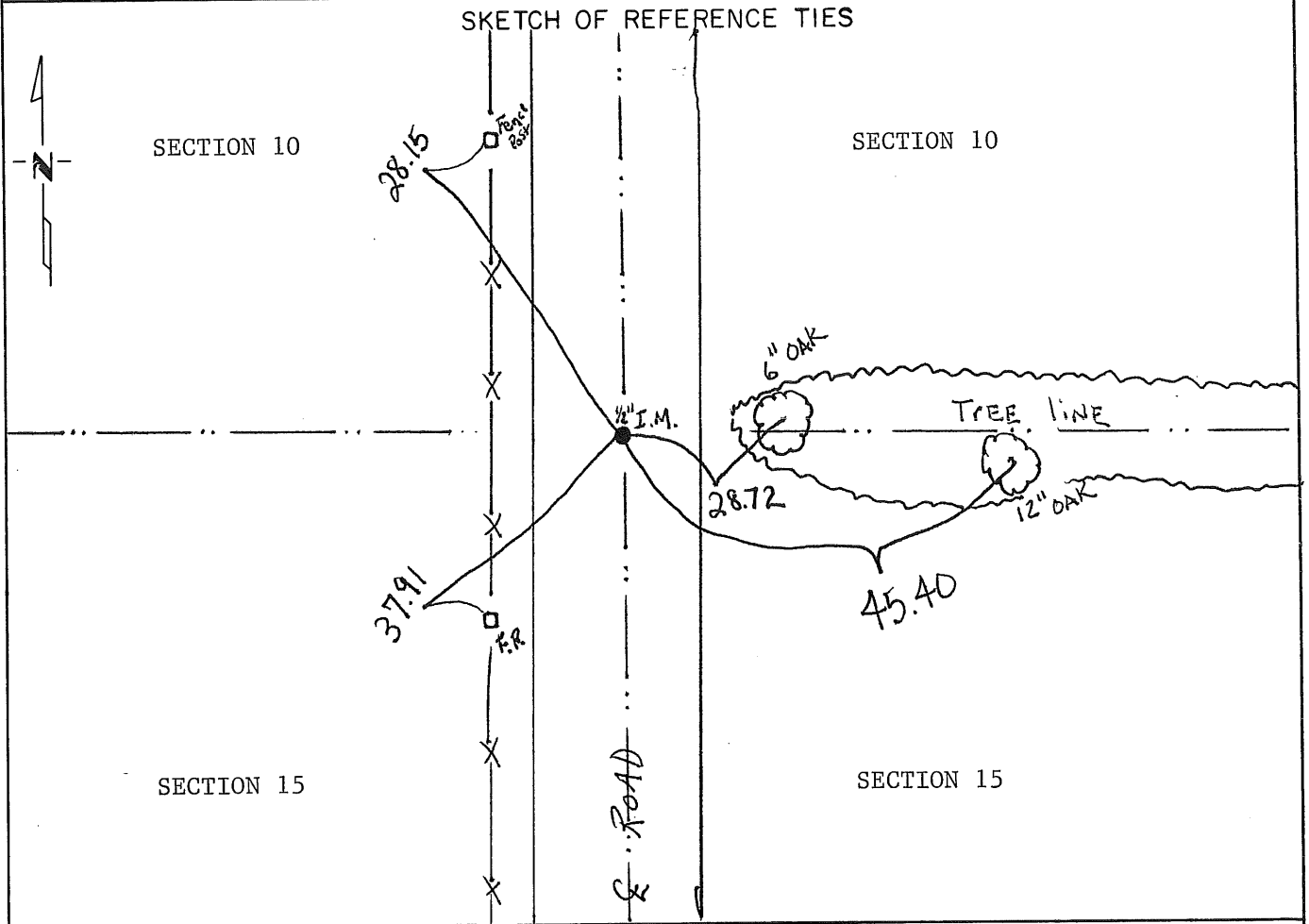
At the corner location shown on the sketch:

On _____ found a _____
DATE

left monument as found, lowered monument, removed monument (explain)

On 10/5/94 placed a Iron monument from Highway Information. Corner is
DATE in centerline of North-South gravel road and on tree line East

SKETCH OF REFERENCE TIES



Statement of evidence relative to this corner location is on back of page.

I hereby certify that this document and the data contained herein was prepared by me or under my direct supervision.

David P. Regan 3/27/95
SIGNATURE DATE

Registration No. 12236

- Land Surveyor, Professional Engineer
- County Surveyor, County Engineer

OFFICE OF THE REGISTER OF DEEDS

County of _____

I hereby certify that this document was filed in the Reg. of Deeds office at _____ .M. on the _____ day of _____ A.D., 19 _____

Register of Deeds _____

By _____, Deputy

DOCUMENT NO. _____

Statement of Evidence:

The G.L.O. survey was done in 1855 by Oscar Davis.

The County Surveyors records were searched with no reference to this corner.

On 10/94, Regan Land Surveyors, Inc. searched and dug the area, then set a ½" iron monument from Highway #23 information, and made ties.

231240

OFFICE OF
BENTON COUNTY RECORDER
BENTON COUNTY, MN
CERTIFIED TO BE FILED
AND/OR RECORDED ON

OCT 20 3 01 PM '95

ALICE G. ENGELMEYER
COUNTY RECORDER

BY *Mm* DEPUTY *xm*