

Certified, Filed and or Recorded on
Nov. 06, 2008 AT 08:41AM

Signed: CK
MARILYN J NOVAK G V ✓
BENTON COUNTY MINNESOTA
MARILYN J NOVAK
COUNTY RECORDER

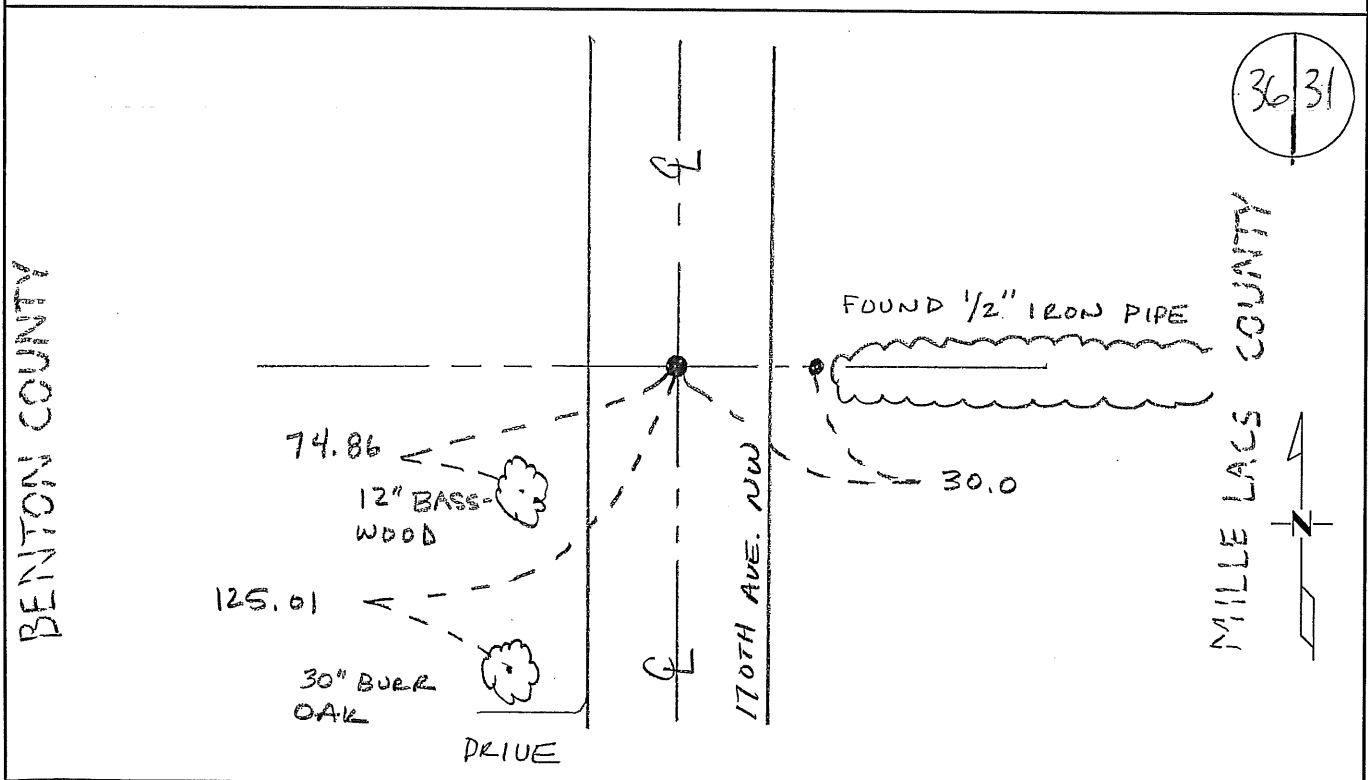
CERTIFICATE OF LOCATION OF GOVERNMENT CORNER

EAST QUARTER Corner of Section 36, Township 37, Range 28
4TH Principal Meridian, State of Minnesota, County of Benton

At the corner location shown on the sketch:

On 21 OCT 2008 found a 1/2" OPEN IRON PIPE (DOWN 0.3')

- left monument as found lowered monument removed monument (explain)
- On _____ placed an _____



Statement of evidence for this corner location is on back of this page.

I hereby certify that this document was researched and prepared by me or under my direct supervision and that I am a licensed Land Surveyor under the laws of the State of Minnesota.

Signature *Jan W. O'G*
Deputy Benton County Surveyor
License No. 45872

Date: 11/06/2008

Benton County Surveyor's Office
 Jason W. Oberg, Deputy County Surveyor
 Minnesota License No. 45872

Statement of Evidence:

I363

East Quarter Corner of Section 36, Township 37 North, Range 28 West, Maywood Township, 4th Principal Meridian, Benton County, Minnesota.

1849 Original US General Land Office surveyor, Theodore Conkey, set a wood post at this location and bearing trees were recorded.

8" Tamarac N 15 W 43 links

8" Tamarac S 62 E 24 links

Line trees were noted as a 8" Maple South 21.60 chains and a 8" Elm North 22.77 chains.

Undated County Surveyor's Record Book 2, page 456, notes the following B.T.

10" Bur Oak S 55 E 123 links

1996 John Oliver, LS 8194, Mille Lacs County Surveyor, set a 1" iron pipe at the lost position in a north/south road and filed a Certificate of Location (#244632). Note: distances from John Oliver & Associates to section corners = 2640.36.

2004 County Coordinates obtained by GPS

NAD 83 (1996 Adjustment)

N- 135460.551

E- 574000.088

2008 The County Surveyor's Office searched and found a ½" iron pipe approximately 0.3' below the surface at the centerline of road (170th Avenue N.W.) and on line with a found ½" iron pipe 30.0± feet to the east. Position gives a distance of 2640.53 feet to the NE ¼ corner which agrees with the 1996 distance reported by Oliver of 2640.36 feet. Position falls 0°01'07" off of a straight line with the deflection angle (going south to north) falling left. The Surveyor accepts the position as the best evidence and updated ties.

County Coordinates to ½" iron pipe obtained by GPS

NAD 83 (1996 Adjustment)

N- 135460.385

E- 574000.510

STATEMENT OF EVIDENCE

East Quarter Corner of Section 36, T. 37, R. 28, Benton Co., MN.

West Quarter Corner of Section 31, T. 37, R. 27, Millie Lacs Co., MN.

The line between Ranges 27 & 28, T. 37, was run by Dep. Surveyor Theo. Conkey in Oct. 1849. We were unable to find any remnants of his* monument or accessories for this corner.

*Please see the Certificate Of Location for the NE corner of Section 1, T. 37, R. 28, Benton County; also being the NW corner of Sec. 6, T. 37, R. 27, Millie Lacs County; for a "discussion" regarding general conditions (including GLO resurveys and "Judicial Roads") affecting the locations of the corners along this County line. In 1994 we were hired by Benton Co. to restore certain corners along their east Co. line. Old survey notes, subsequent to the GLO notes, from both counties, if any, are as follows (in chronological order):

Benton: Requested from the Co. Hwy. Dept. None provided other than GLO notes.
Millie Lacs: None along this line other than GLO.

We are aware of no other surveys by others other than: In 1994 Comstock & Davis, Inc., via their Little Falls office, was hired to provide Benton County with geodetic coordinates on selected corners within the County. They did this with a combination of GPS and traditional methods. The subject corner was not restored during said survey.

After thorough and careful analysis we restored this corner by SPM along the straight line between the restored NW and SW corners of said Sec. 31. Because there was no record of subsequent monuments we did not excavate. On 6/7/96 we placed a 1" iron pipe as shown on the front hereof.

MLCLS: /WQ313727

244632

OFFICE OF
BENTON COUNTY RECORDER
BENTON COUNTY, MN
CERTIFIED TO BE FILED
AND/OR RECORDED ON

OCT 3 8 49 AM '97

ALICE O. ENGELMEYER
COUNTY RECORDER

BY *A. Engelmeier* DEPUTY x.m