

A 361601

Certified, Filed and or Recorded on
Nov. 06, 2008 AT 08:49AM

Signed: CK
MARILYN J NOVAK G V
BENTON COUNTY MINNESOTA
MARILYN J NOVAK
COUNTY RECORDER

CERTIFICATE OF LOCATION OF GOVERNMENT CORNER

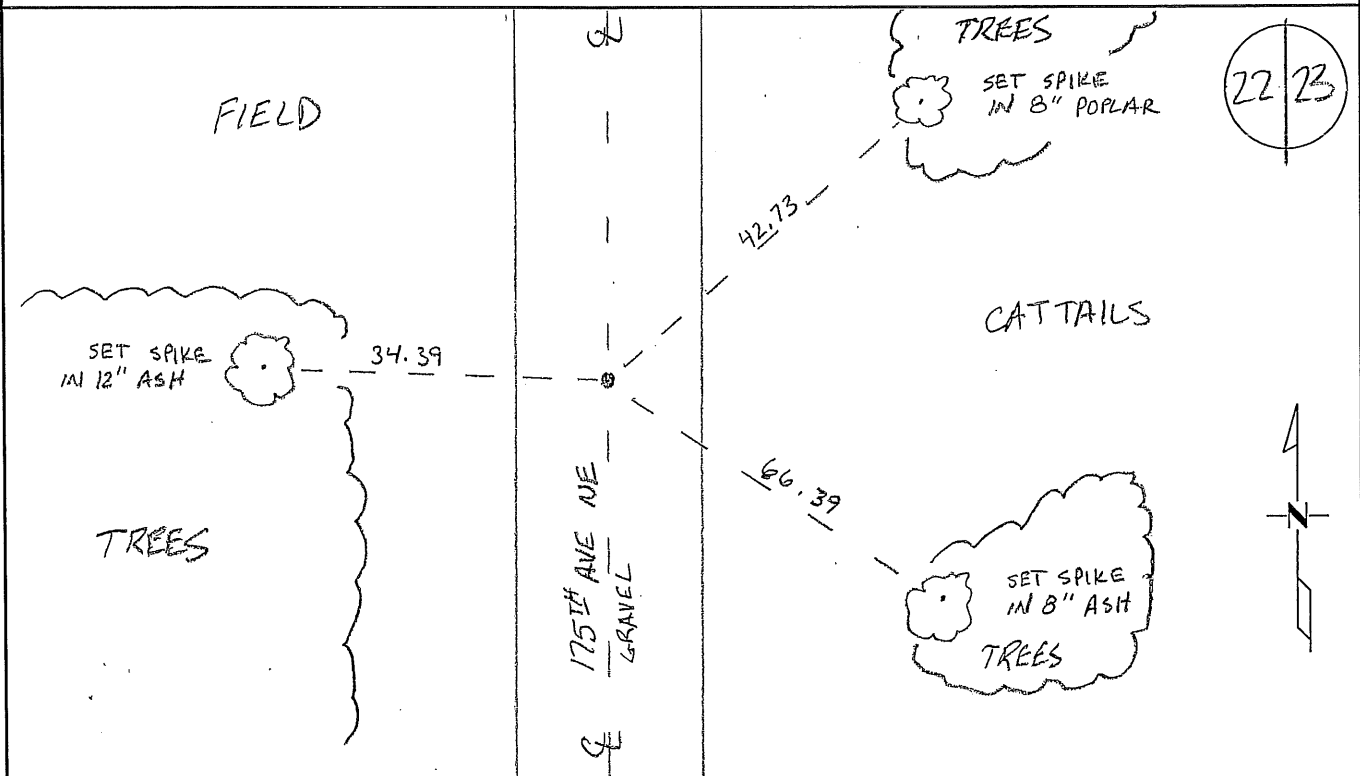
EAST QUARTER Corner of Section 22, Township 37N, Range 25W
4TH Principal Meridian, State of Minnesota, County of Benton

At the corner location shown on the sketch:

On 10/20/08 found a 3/4" IRON PIPE CAP # 17259 down 0.2'

left monument as found lowered monument removed monument (explain)

On _____ placed on _____



Statement of evidence for this corner location is on back of this page.

I hereby certify that this document was researched and prepared by me or under my direct supervision and that I am a licensed Land Surveyor under the laws of the State of Minnesota.

Signature Jan W. Oly
Deputy Benton County Surveyor
License No. 45872

Date: 11/03/2008

Benton County Surveyor's Office
 Jason W. Oberg, Deputy County Surveyor
 Minnesota License No. 45872

Statement of Evidence:

I223

East Quarter Corner of Section 22, Township 37 North, Range 28 West, Maywood Township, 4th Principal Meridian, Benton County, Minnesota.

1855 Original US General Land Office survey set a wood post at this location and bearing trees were recorded.

12" Elm	N 29 ½ E	116 links
6" Poplar	S 63 ½ E	31 links

1915 County Surveyor's Record Book 2, pages 430 and 431, and Record Book A, Map No. 3, shows a survey of Section 23 by J. P. Soderstrum. Notes show he found old stake at 40.22 chains north of the SW corner, which was used as the corner for road survey. He notes fence west at 40.29 chains north of the SW corner of Sec. 23. According to the map, he did not use either position, but set the ¼ corner lost at 40.18 chains north of the SW corner of Sec. 23.

2008 The County Surveyor's Office searched and found a ¾" capped iron pipe (#17259) approximately 0.2' below the surface of the centerline of a north-south gravel road (175th Avenue N.E.). Distance to the NE corner of Section 22 measures 2649.93 ft. (40.15 ch.). Distance to the SW corner of Section 23 measures 2649.56 ft. (40.14 ch.) which checks well with Soderstrum's 1915 lost position and distance of 40.18 ch. to said SW corner of Section 23. Surveyor accepts the position as marking the Corner and updated ties.

County Coordinates to ¾" iron pipe
 NAD 83 (1996 Adjustment)
 N-145701.203
 E-563294.975