

# CERTIFICATE OF LOCATION OF GOVERNMENT CORNER

NORTHQUARTER Corner of Section 33, Township 37, Range 28, \_\_\_\_\_ P.M.

STATE OF MINNESOTA, County of BENTON

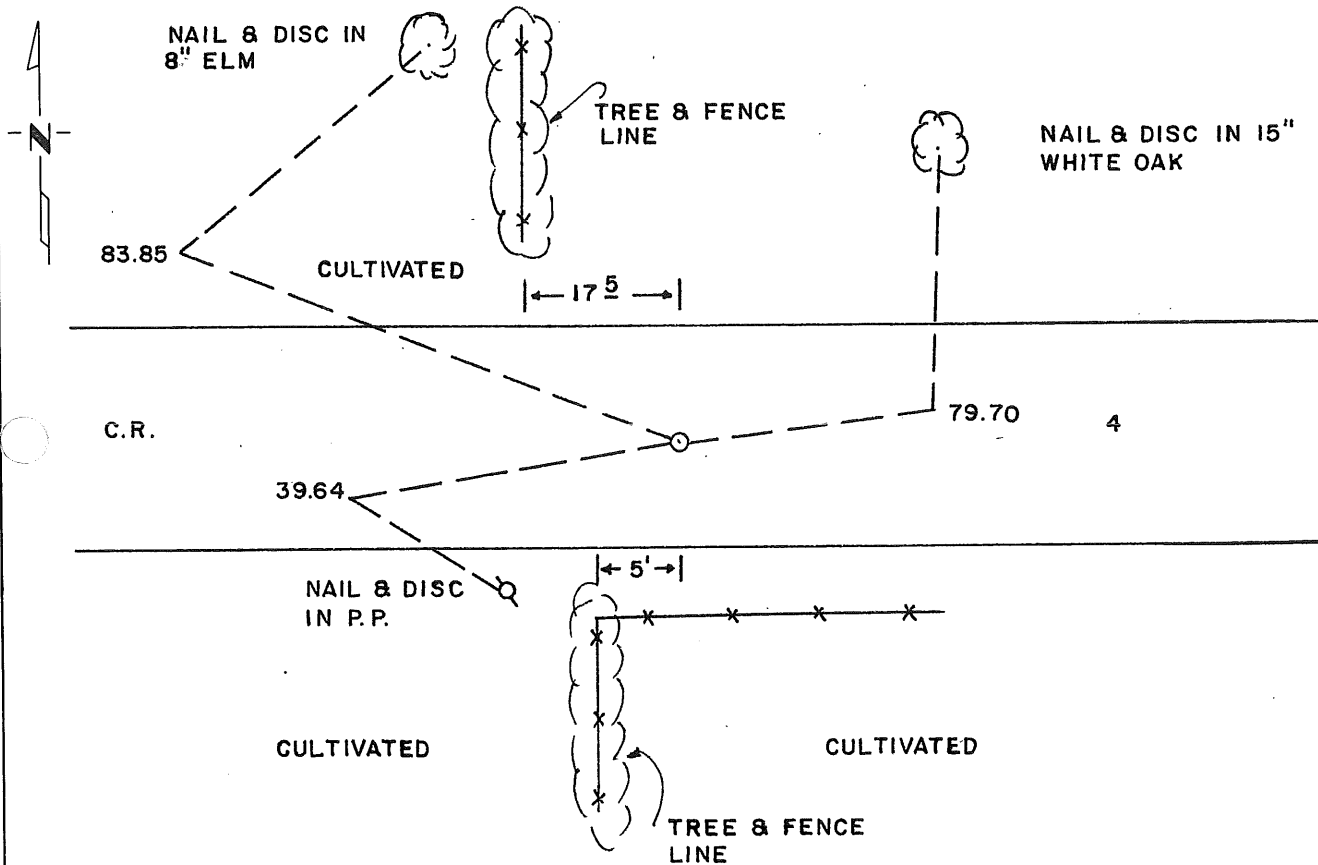
At the corner location shown on the sketch:

On 8-17-93 found a NOTHING  
DATE

left monument as found,  lowered monument,  removed monument (explain)

On 10-1-93 placed a STANDARD CAST IRON MONUMENT  
DATE

### SKETCH OF REFERENCE TIES



Statement of evidence relative to this corner location is on back of page.

I hereby certify that this document and the data contained herein was prepared by me or under my direct supervision.

Sidney F. Williamson 1/5/95  
SIGNATURE DATE

Registration No. 10918

Land Surveyor,  Professional Engineer

County Surveyor,  County Engineer

### OFFICE OF THE COUNTY RECORDER

County of \_\_\_\_\_

I hereby certify that this document was filed in the Co. Recorders office at \_\_\_\_\_ .M. on the \_\_\_\_\_ day of \_\_\_\_\_ A.D., 19 \_\_\_\_\_

County Recorder \_\_\_\_\_

By \_\_\_\_\_, Deputy

DOCUMENT NO. \_\_\_\_\_

Statement of Evidence:

1. In 1855, the original government survey was performed.
2. On August 17, 1993, Williamson-Kotsmith, Inc. searched the area for a corner and found nothing.
3. On October 1, 1993, Williamson-Kotsmith, Inc. placed a Standard Cast Iron Monument by single proportionate measurement method. It measures 2,653.76 feet, the northeast and northwest corners.

to

227424

OFFICE OF  
BENTON COUNTY RECORDER  
BENTON COUNTY, AR  
CERTIFIED TO BE FILED  
AND FOR RECORD ON

MAR 3 8 46 AM '95

ALICE C. FROST MEYER  
COUNTY CLERK

BY M.M. DEPUTY